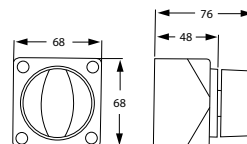


## Battery Switches

**275 Amp Battery Master Switch**

'Contour Lock' system with removable plates for connection from all sides. This allows the switch to be a stand alone unit or locked together with other switches. The control knob cannot be removed whilst in an ON or OFF position, however it can be removed by switching to an anti-clockwise 45° position. Suitable for surface or recess mounting by cutting a 52mm hole.

<b>Housing Description</b>	Impact resistant plastic Tin copper studs and nuts
<b>Termination Stud Size</b>	2 x 10mm (3/4")
<b>Operation</b>	ON / OFF
<b>Degree of Protection</b>	IP 56
<b>Max. Load 12 / 24V DC</b>	Continuous 275 Amps Intermittent 455 Amps (5 minutes) Cranking 1250 Amps (10 seconds)
<b>Max. Voltage</b>	48V DC

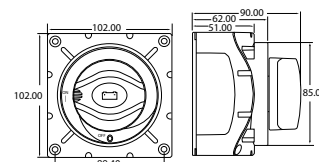
**275 Amp Battery Master Switch**

**Part Number**  
4640

**600 Amp Battery Master Switch**

'Contour Lock' system with removable plates for connection from all sides. This allows the switch to be a stand alone unit or locked together with battery distribution modules. The control knob cannot be removed whilst in an ON or OFF position, however it can be removed by switching to an anti-clockwise 45° position. Switch can also be padlocked. Suitable for surface or recess mounting by cutting an 85mm hole.

<b>Housing Description</b>	Impact resistant plastic Tin copper studs and nuts
<b>Termination Stud Size</b>	2 x 12mm (1/2")
<b>Operation</b>	ON / OFF
<b>Degree of Protection</b>	IP 56
<b>Max. Load 12 / 24V DC</b>	Continuous 600 Amps Intermittent 800 Amps (5 minutes) Cranking 2500 Amps (10 seconds)
<b>Max. Voltage</b>	48V DC

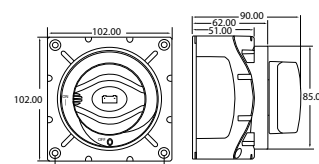
**600 Amp Battery Master Switch**

**Part Number**  
4720

**350 Amp Battery Selector Switch**

Featuring the patented 'Contour Lock' system with removable side plates and back plate for connection from all sides. This allows the switch to be a stand alone unit or locked together with battery distribution modules. Necessary for on board systems fed from 2 or more batteries and whose supply comes from more than 1 generator. Rotary switch in 4 switch positions of battery 1-2-Both-OFF. Switch can also be padlocked. Suitable for surface or recess mounting by cutting an 85mm hole.

<b>Housing Description</b>	Impact resistant plastic Tin copper studs and nuts
<b>Termination Stud Size</b>	3 x 10mm (3/4")
<b>Operation</b>	1-2-Both-OFF
<b>Degree of Protection</b>	IP 56
<b>Max. Load 12 / 24V DC</b>	Continuous 350 Amps - B1 or B2 Continuous 500 Amps - B1 and B2 Intermittent 500 Amps (5 minutes) Cranking 1500 Amps (10 seconds)
<b>Max. Voltage</b>	48V DC

**350 Amp Battery Selector Switch**

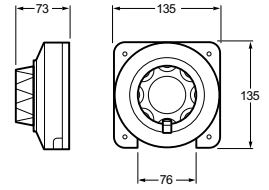
**Part Number**  
4721

## Battery Switches



## Heavy Duty Battery Master Switch

<b>Description</b>	Enables switching from battery 1 or 2 or linking up of-both batteries. May also be used as a manual isolator for charging batteries.
<b>Operation</b>	1-2-Both-OFF
<b>Max. Load</b>	12V / 175A or 24V / 87.5A (continuous)



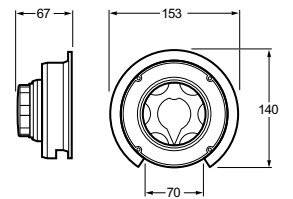
## Heavy Duty Battery Master Switch

**Part Number**  
2765



## Dual Battery Master Switch

<b>Description</b>	for 6-36V DC battery systems with alternators or generators. Water and vapour resistant. USCG safety conformance.
<b>Operation</b>	1-2-Both-OFF
<b>Max. Load</b>	12V / 500A or 24V / 250A (10 seconds) 12V / 310A or 24V / 155A (continuous)



## Dual Battery Master Switch

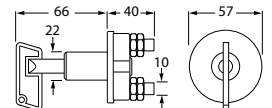
**Part Number**  
2767  
2768 - with Key Lock



## 50 Amp Battery Master Switch

Positive or negative cable can be switched as required. Key can be removed in the OFF position, current interrupted.

<b>Housing Description</b>	Impact resistant plastic
<b>Cable Connection</b>	2 screw terminals, M10
<b>Degree of Protection</b>	IP X4
<b>Max. load</b>	12V / max. 1000A (10 seconds) 24V / max. 500A (10 seconds) (compliant with VDA 72750)



## 50 Amp Battery Master Switch

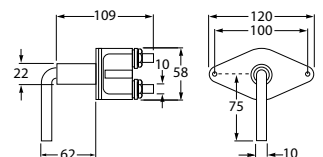
**Part Number**  
2764 **Spare Key Number** 4652



## 100 Amp Battery Master Switch

Heavy duty switch for high loads. Key can be removed in the OFF position, current interrupted. Positive or negative cable can be switched as required.

<b>Housing Description</b>	Impact resistant plastic Steel key and mounting plate
<b>Cable Connection</b>	2 screw terminals, M10
<b>Degree of Protection</b>	IP X4
<b>Max. Load</b>	12V / 24V max. 2500A (10 seconds)
<b>Max. Continuous Load</b>	12V / 24V max. 100A 24V / max. 2500A (10 seconds) (compliant with VDA 72750)



## 100 Amp Battery Master Switch

**Part Number**  
4653 **Spare Key Number** 4654