



Montageanleitung

Doppelscheinwerfer Halogen
Doppelscheinwerfer Xenon

Installation instructions

Halogen driving lamp
Xenon driving lamp

Instructions de montage

Projecteurs route au halogen
Projecteurs route au xénon

Montagehandleiding

Halogen verstralers
Xenon verstralers

Istruzioni di montaggio

Faro abbagliante Halogen
Faro abbagliante Xenon

Monteringsanvisning

Halogen fjärrstrålkastare
Xenon fjärrstrålkastare

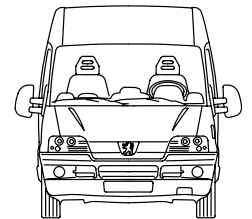
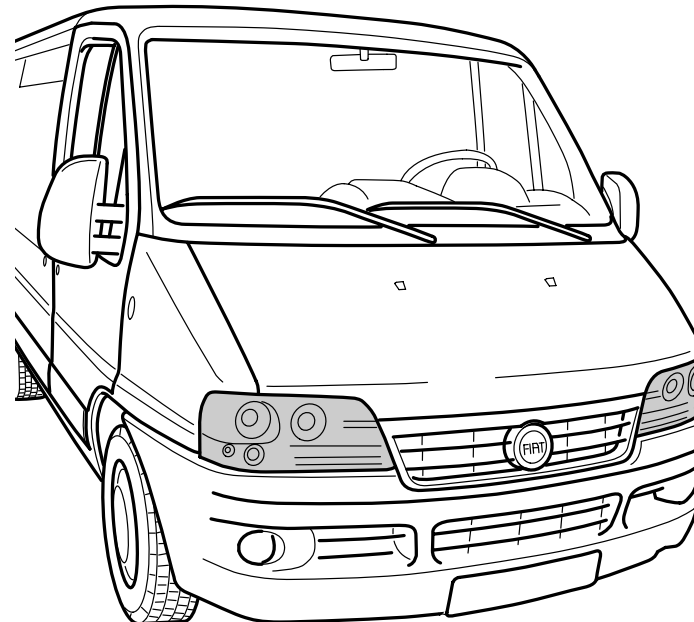
Instrucciones de montaje

Faros de largo alcance halogen
Faros de largo alcance xenón

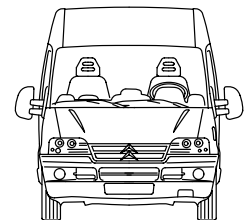
Asennusohje

Halogen-kaukovalot
Ksenon-kaukovalot

Fiat Ducato



Peugeot Boxer



Citroen Jumper



460 924-00/04/03

© Hella KGaA Hueck & Co. D-59552 Lippstadt

Hella Bestell-Nr.
Hella Item No.
Hella Réf. art.
Hella Hella bestnr
Hella Artikelnr.
Hella N° de artículo
Hella Nr. articolo
Hella tilaus-nro

1DL 008 945-891

1DL 008 945-911

Technische Änderungen vorbehalten
Subject to alteration without notice
Sous réserve de modifications techniques
Vi förbehåller oss rätten till tekniska ändringar
Technische wijzigingen voorbehouden
Reservadas modificaciones técnicas
Con riserva di apportare modifiche tecniche
Oikeus teknisiin muutoksiin pidätetään

D - Inhaltsverzeichnis

	Allgemeine Information	Seite	4
	Lieferumfang Nachrüstsatz Halogen Fernscheinwerfer	Seite	6
	Benötigtes Werkzeug Halogen Fernscheinwerfer	Seite	7
A1-18	Montage Halogen Fernscheinwerfer	Seite	8
B1	Umstellung Rechtsverkehr - Linksverkehr		
	Umstellung Linksverkehr - Rechtsverkehr	Seite	16
	Lieferumfang Nachrüstsatz Xenon Fernscheinwerfer	Seite	18
	Benötigtes Werkzeug Xenon Fernscheinwerfer	Seite	19
C1-46	Montage Xenon Fernscheinwerfer	Seite	20
D1- 4	Umstellung Rechtsverkehr - Linksverkehr		
	Umstellung Linksverkehr - Rechtsverkehr	Seite	38
	Noch ein Tip	Seite	40

GB - Contents

	General Information	Page	4
	Scope of supply halogen driving lamp retrofit kit	Page	6
	Installation tools required for halogen driving lamp	Page	7
A1-18	Assembly of xenon driving lamp	Page	8
B1	Converting from right-hand traffic - left-hand traffic		
	Converting from left-hand traffic - right-hand traffic	Page	16
	Scope of supply xenon driving lamp kit	Page	18
	Installation tools required for xenon driving lamp	Page	19
C1-46	Assembly of xenon driving lamp	Page	20
D1- 4	Converting from right-hand traffic - left-hand traffic		
	Converting from left-hand traffic - right-hand traffic	Page	38
	One more tip	Page	40

F - Sommaire

	Informations générales	Page	4
	Fourniture Kit de projecteurs route au halogen	Page	6
	Outillage nécessaire projecteurs route au halogen	Page	7
A1-18	Montage des projecteurs route au halogen	Page	8
B1	Conversion circulation à droite - circulation à gauche		
	Conversion circulation à gauche - circulation à droite	Page	16
	Fourniture Kit de projecteurs route au xénon	Page	18
	Outillage nécessaire projecteurs route au xénon	Page	19
C1-46	Montage des projecteurs route au xénon	Page	20
D1- 4	Conversion circulation à droite - circulation à gauche		
	Conversion circulation à gauche - circulation à droite	Page	38
	Encore un conseil	Page	40

NL - Inhoudsopgave

	Algemene informatie	Zijde	4
	Inhoud inbouwset halogen verstralers	Zijde	6
	Benodigd gereedschap halogen verstralers	Zijde	7
A1-18	Montage halogen verstralers	Zijde	8
B1	Omstelling rechts rijdend verkeer – links rijdend verkeer		
	Omstelling links rijdend verkeer – rechts rijdend verkeer	Zijde	16
	Inhoud inbouwset xenon verstralers	Zijde	18
	Benodigd gereedschap xenon verstralers	Zijde	19
C1-46	Montage xenon verstralers	Zijde	20
D1-12	Omstelling rechts rijdend verkeer – links rijdend verkeer		
	Omstelling links rijdend verkeer – rechts rijdend verkeer	Zijde	38
	Nog een tip	Zijde	40

I - Indice

	Informazioni generali	Pagina	5
	Kit di forniture faro abbagliante Halogen	Pagina	6
	Attrezzi necessari per faro abbagliante Halogen	Pagina	7
A1-18	Montaggio faro abbagliante Halogen	Pagina	8
B1	Modifica da circolazione a destra a circolazione a sinistra		
	Modifica da circolazione a sinistra a circolazione a destra	Pagina	16
	Kit di forniture faro abbagliante Xeno	Pagina	18
	Attrezzi necessari per faro abbagliante Xeno	Pagina	19
C1-46	Montaggio faro abbagliante Xeno	Pagina	20
D1- 4	Modifica da circolazione a destra a circolazione a sinistra		
	Modifica da circolazione a sinistra a circolazione a destra	Pagina	38
	Un ultimo suggerimento	Pagina	41

S - Innehållsförteckning

	Allmän information	Sida	5
	Leveransomfattning eftermonteringssats Halogen fjärrstrålkastare		
	fjärrstrålkastare	Sida	6
	Nödvändiga verktyg Halogen fjärrstrålkastare	Sida	7
A1-18	Montering Halogen fjärrstrålkastare	Sida	8
B1	Omställning till vänstertrafik		
	Omställning till högertrafik	Sida	16
	Leveransomfattning eftermonteringssats Xenon fjärrstrålkastare		
	fjärrstrålkastare	Sida	18
	Nödvändiga verktyg Xenon fjärrstrålkastare	Sida	19
C1-46	Montering Xenon fjärrstrålkastare	Sida	20
D1- 4	Omställning till vänstertrafik		
	Omställning till högertrafik	Sida	38
	Ytterligare tips	Sida	41

E - Índice

	Informaciones generales	Página	5
	Volumen de suministro reequipamiento faros de largo alcance Halogen	Página	6
	Herramientas necesarias para los faros de largo alcance Halogen	Página	7
A1-18	Montaje de faros de largo alcance Halogen	Página	8
B1	Cambio de tráfico por la derecha à tráfico por la izquierda		
	Cambio de tráfico por la izquierda à tráfico por la derecha	Página	16
	Volumen de suministro reequipamiento faros de largo alcance xenón	Página	18
	Herramientas necesarias para los faros de largo alcance Xenón	Página	19
C1-46	Montaje de faros de largo alcance xenón	Página	20
D1- 4	Cambio de tráfico por la derecha à tráfico por la izquierda		
	Cambio de tráfico por la izquierda à tráfico por la derecha	Página	38
	Un consejo	Página	41

FIN - Sisällysluettelo

	Yleiset tiedot	Sivu	5
	Toimitussisältö halogen-kaukovalojen jälkivarustelusarja	Sivu	6
	Tarvittavat työkalut	Sivu	7
A1-18	Asennus halogen-kaukovalot	Sivu	8
B1	Muuttaminen vasemmanpuoleista liikennettä varten		
	Muuttaminen oikeanpuoleista liikennettä varten	Sivu	16
	Toimitussisältö ksenon-kaukovalojen jälkivarustelusarja	Sivu	18
	Tarvittavat työkalut	Sivu	19
C1-46	Asennus ksenon-kaukovalot	Sivu	20
D1- 4	Muuttaminen vasemmanpuoleista liikennettä varten		
	Muuttaminen oikeanpuoleista liikennettä varten	Sivu	38
	Vielä tärkeä huomautus	Sivu	41

D

Minusleitung von Batterie abklemmen.

Teile gemäß Abbildung montieren.

Zur Vermeidung von Beschädigungen an der Leitungsisolation vermeiden Sie Berührung mit scharfen Kanten.

Achten Sie darauf, daß die Leitung an der richtigen Stelle verläuft und ordnungsgemäß befestigt ist. Achten Sie darauf, daß der Kabelbaum und andere Teile ordnungsgemäß und genau positioniert sind.

GB

Disconnect battery negative terminal.

Install parts as shown on illustration.

To avoid damage to wire harness, prevent contact with sharp edges.

Ensure that the wiring harness is routed and fixed in the correct position.

Ensure that the wiring harness and other components are located neatly and securely.

F

Déconnecter le câble négatif de la batterie.

Monter les pièces selon la figure.

Eviter tout contact avec des arêtes vives afin de ne pas endommager l'isolation des câbles.

Veiller à ce que le faisceau de câbles passe au bon endroit et soit correctement fixé.

Veiller à ce que le faisceau et les autres pièces soient positionnés correctement et avec la précision requise.

NL

Massakabel van accu afnemen.

Delen overeenkomstig afbeelding monteren.

Ter vermijding van beschadigingen aan de kabelboom dient contact met scherpe kanten te worden vermeden.

Let erop, dat de kabelboom op de juiste plaats ligt en correct bevestigd is.

Let erop, dat de kabelboom en andere delen correct en precies gepositioneerd worden.

I

Staccare il cavo negativo della batteria.

Montare le parti come indicato nelle illustrazioni.

Per evitare danni all'isolamento dei cavi, evitare che vengano a contatto con bordi spigolosi. Fare attenzione che il fascio di cavi venga posato al posto giusto e fissato a regola d'arte. Fare ben attenzione che il fascio di cavi e le altre parti vengano posizionate correttamente ed accuratamente.

S

Lossa minuskabeln från batteriet.

Montera detaljerna enligt figura.

För att förhindra skador på ledningarnas isolation skall beröring med vassa kanter undvikas.

Se till att ledningsstammen dras på rätt ställe och är ordentligt fäst så.

Kontrollera noga att ledningsstammen och andra detaljer ligger på rätt plats.

E

Desembornar el cable negativo de la batería.

Montar las piezas tal como se indica en la figura.

Para evitar desperfectos en el aislamiento del cable, hay que evitar el contacto con aristas cortantes.

Preste atención a que el mazo de cables transcurra por ellugar correcto y esté fijado correctamente de modo.

Preste atención a que el mazo del cable y las demas piezas estén puestas correcta y exactamente.

FIN

Miinusjohto irrotetaan akusta.

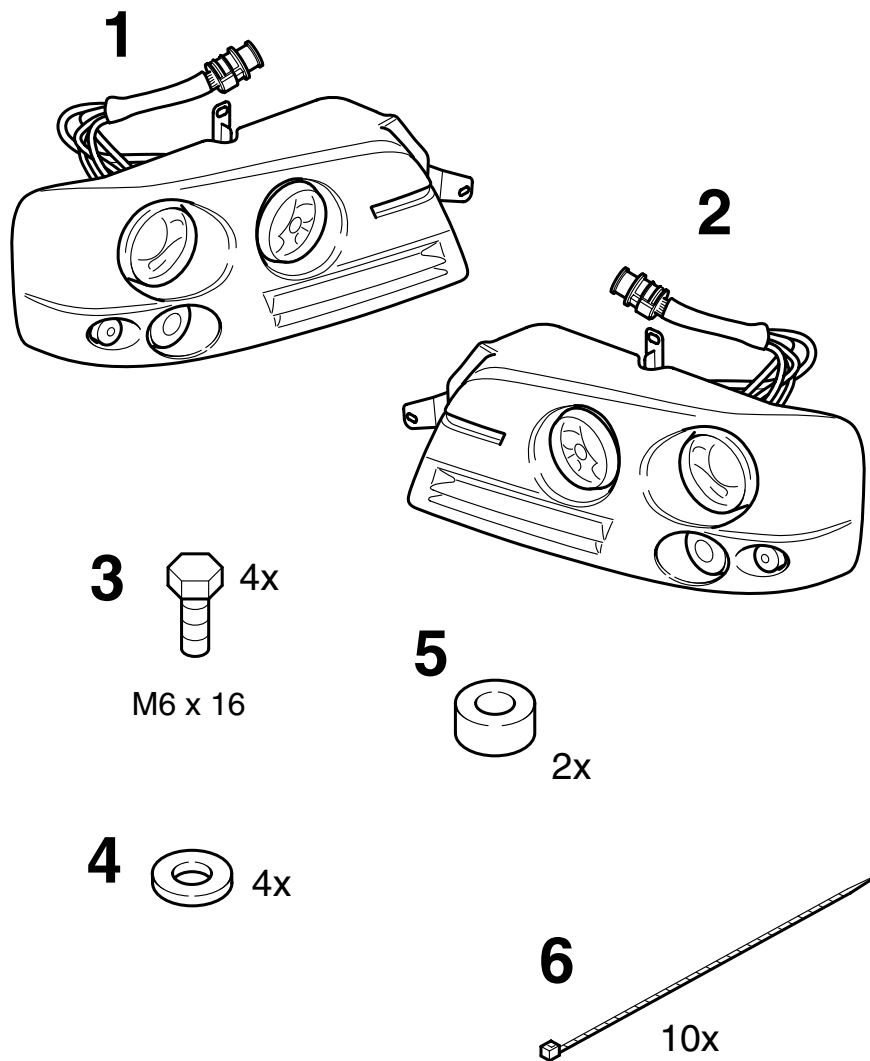
Asenna osat kuvien mukaan.

Johdot eivät saa koskettaa teräviin reunoihin, etteivät eristeet vaurioidu.

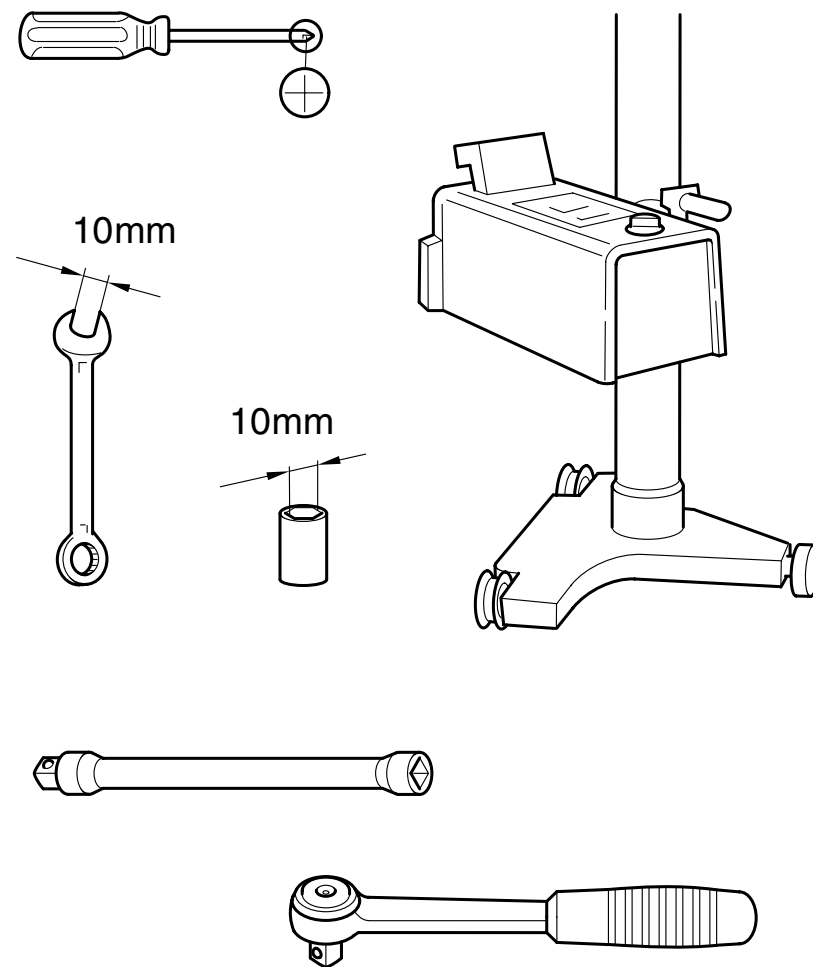
Katso, että johto kulkee oikeassa paikassa, se on asianmukaisesti kiinnitetty.

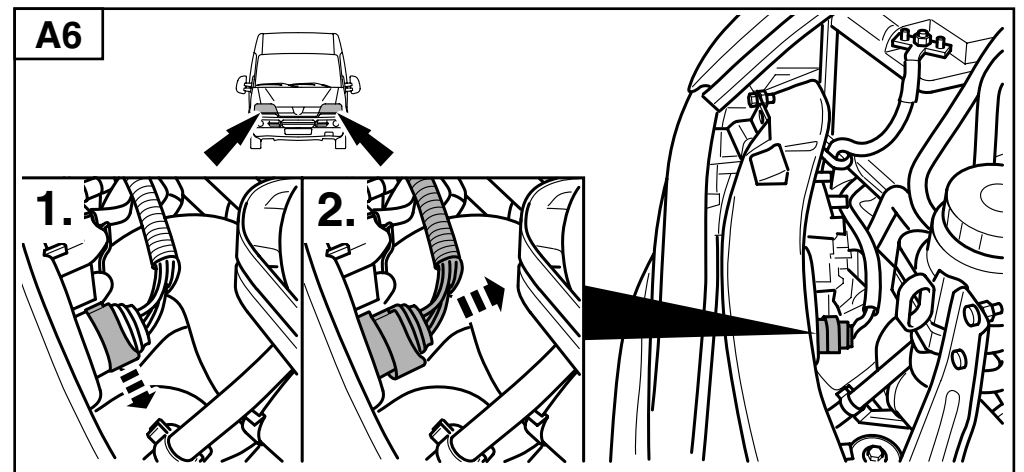
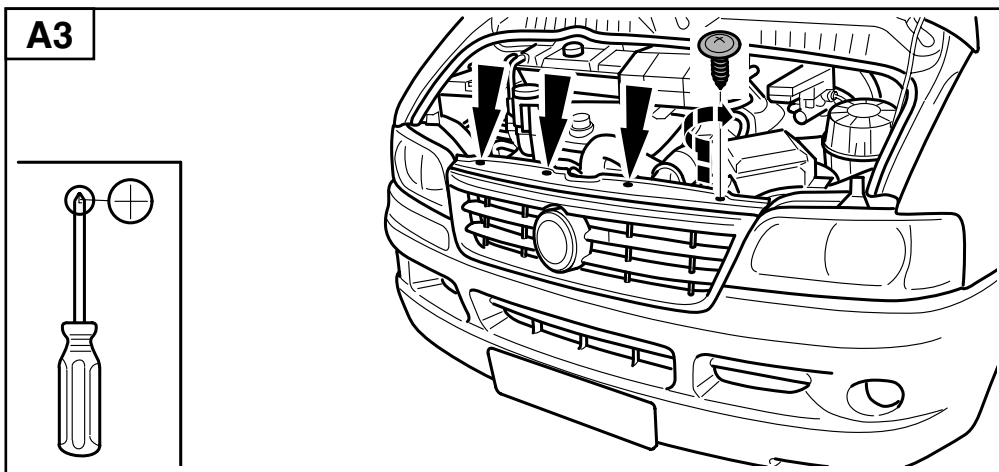
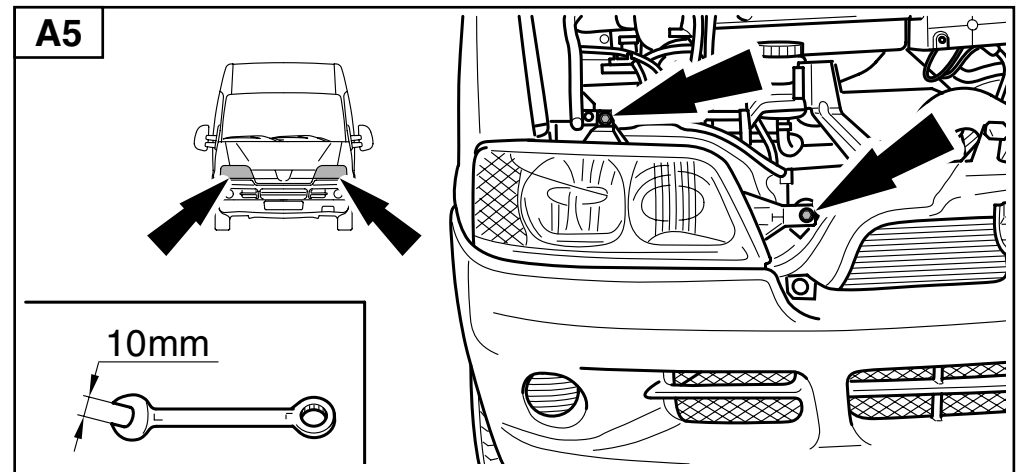
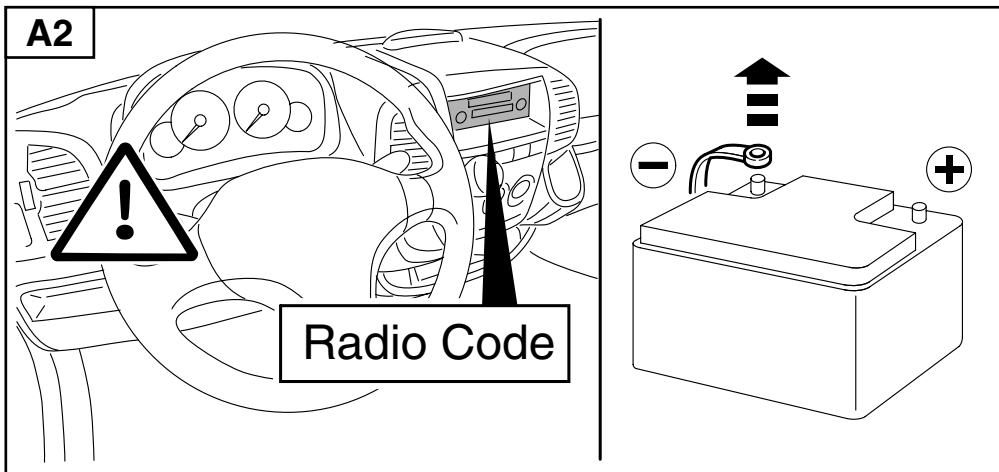
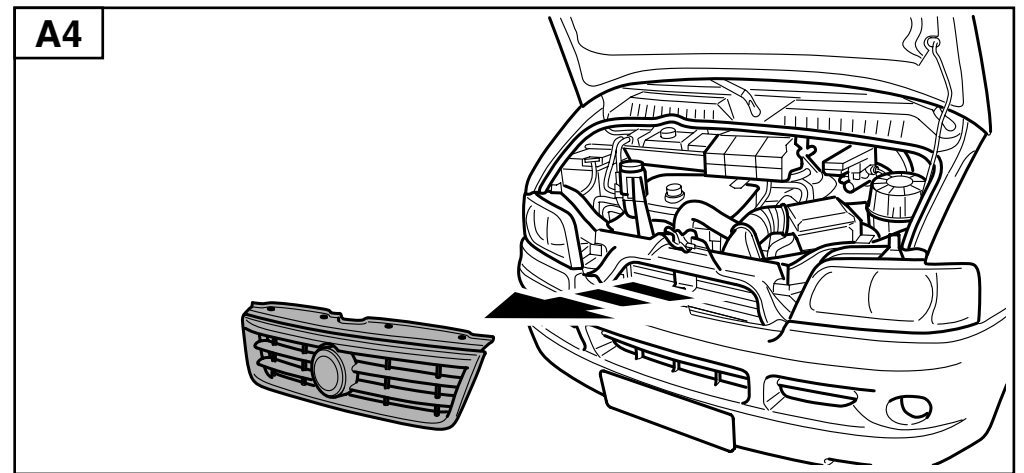
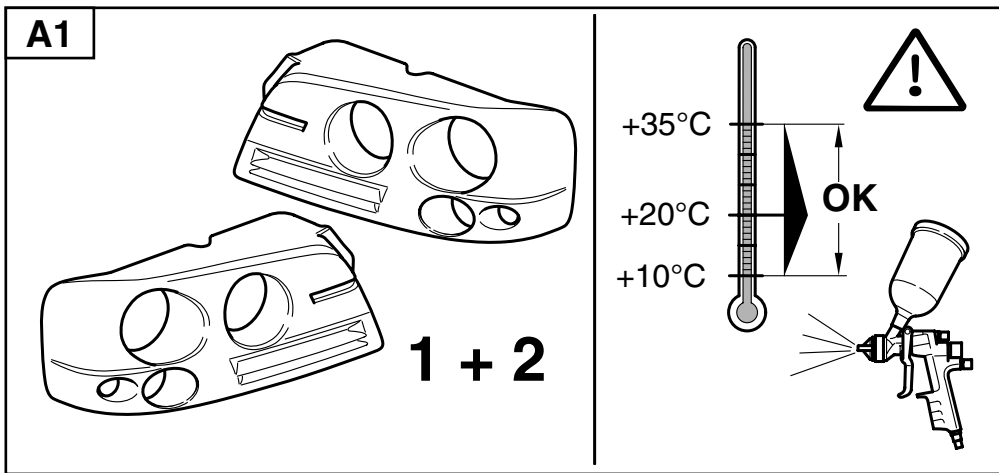
Tarkista, että johtosarja ja muut osat ovat asianmukaisesti ja tarkasti paikoillaan.

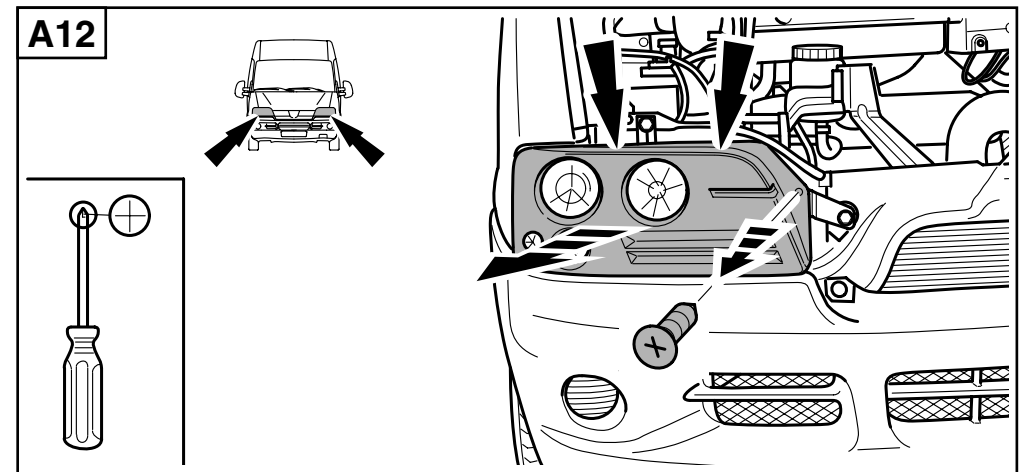
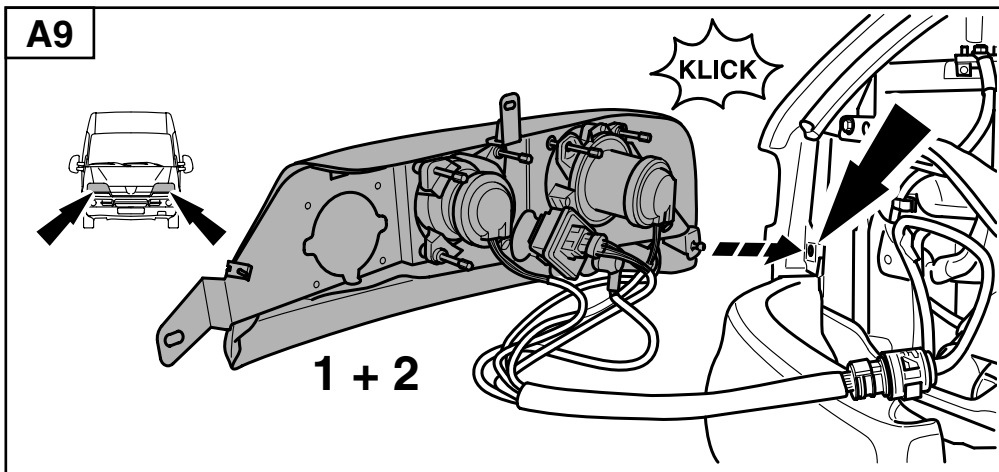
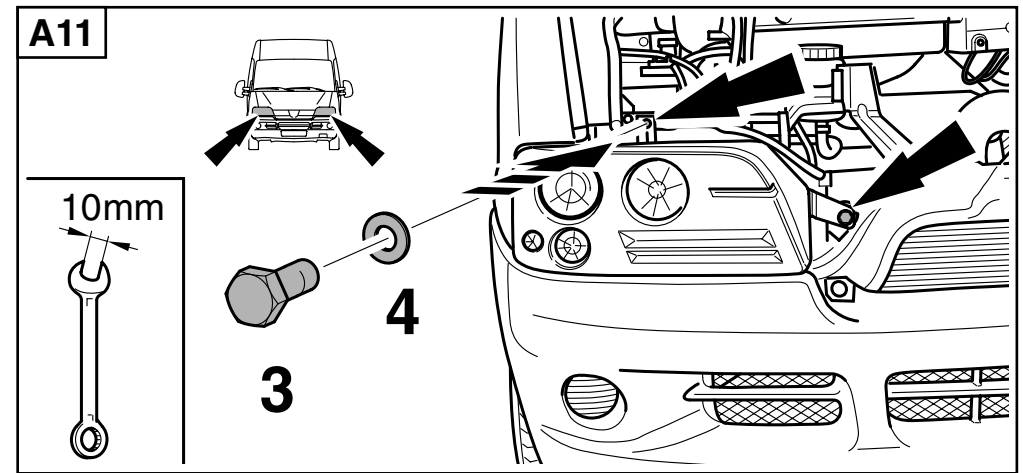
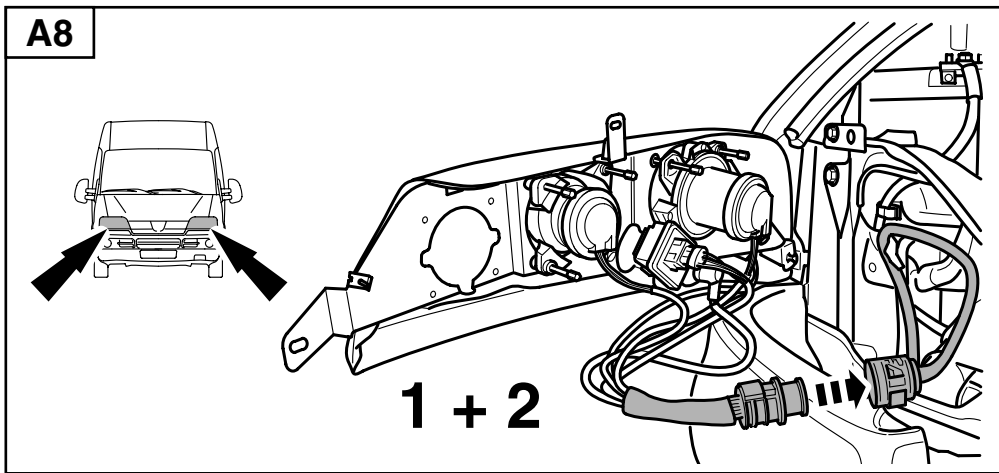
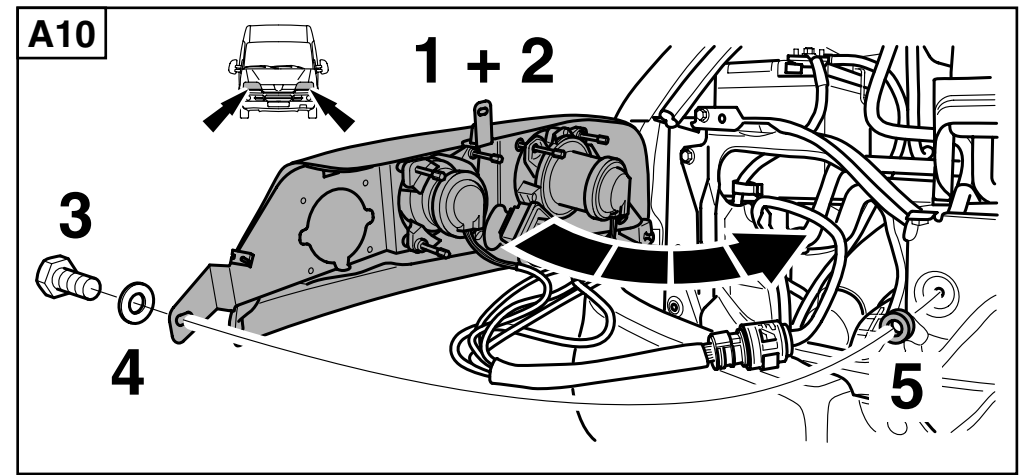
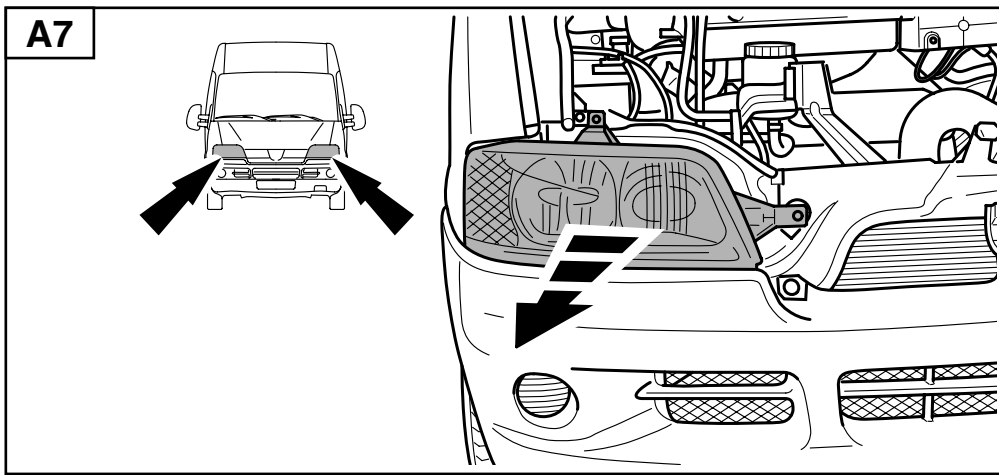
- D** Lieferumfang Nachrüstsatz Halogen Fernscheinwerfer
GB Scope of supply halogen driving lamp retrofit kit
F Fourniture Kit de projecteurs route au halogen
NL Inhoud inbouwset halogen verstralers
I Kit di forniture faro abbagliante Halogen
S Leveransomfattning eftermonteringsatts Halogen fjärrstrålkastare
E Volumen de suministro reequipamiento faros de largo alcance halogen
FIN Toimitussisältö halogen-kaukovalonheittimien jälkivarustelusarja

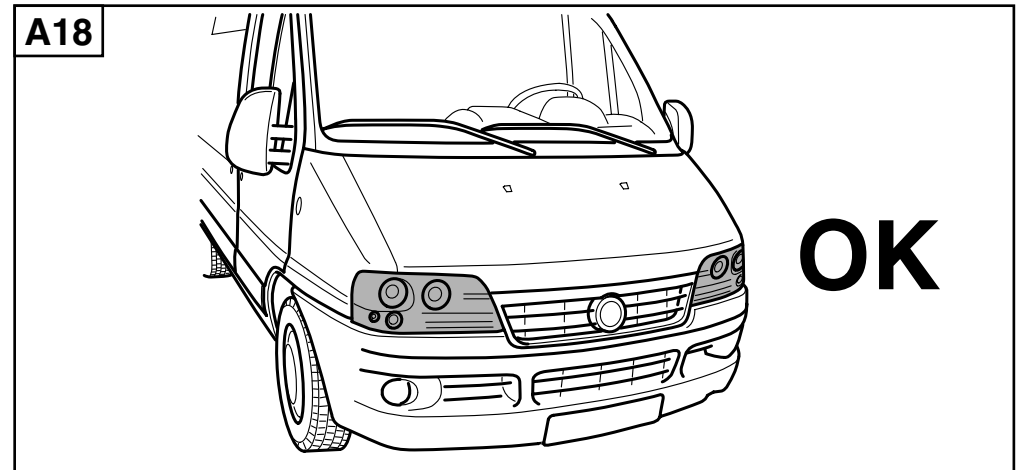
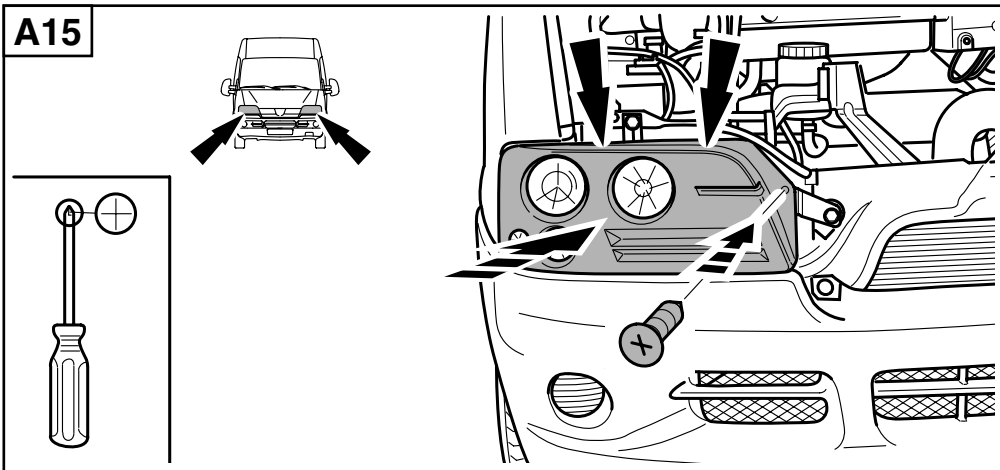
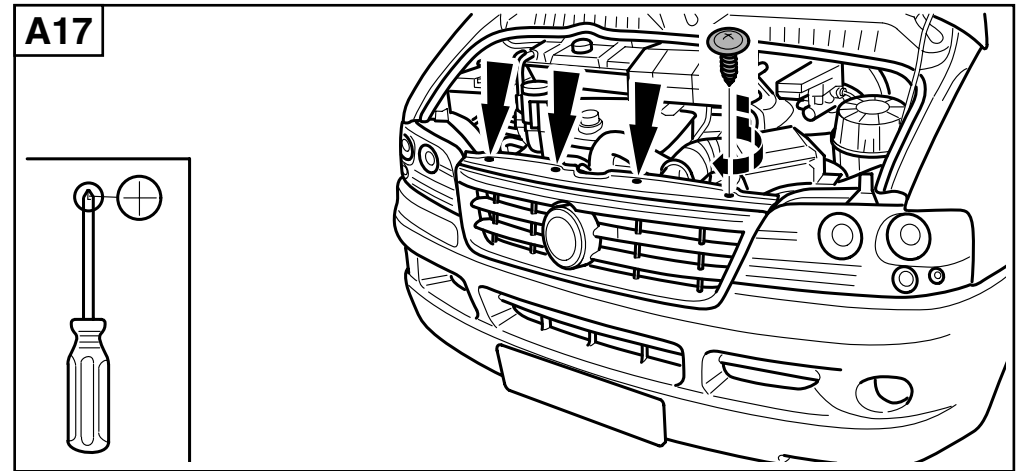
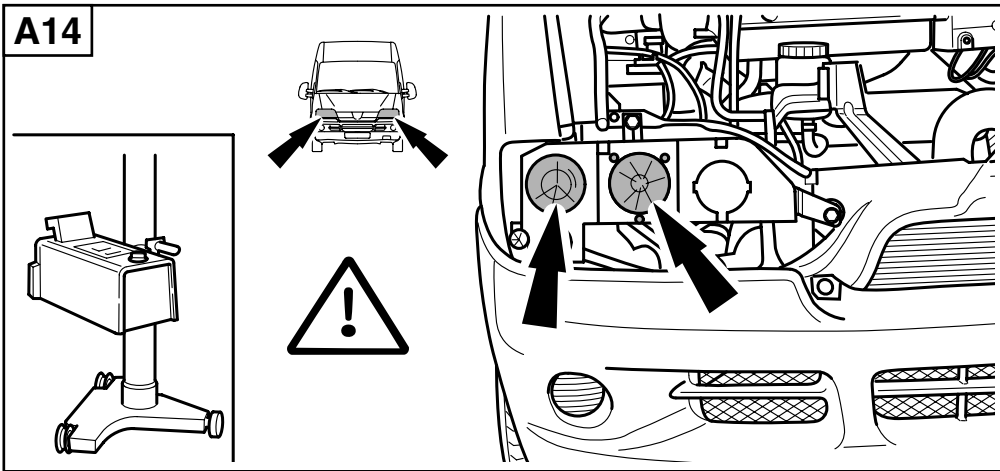
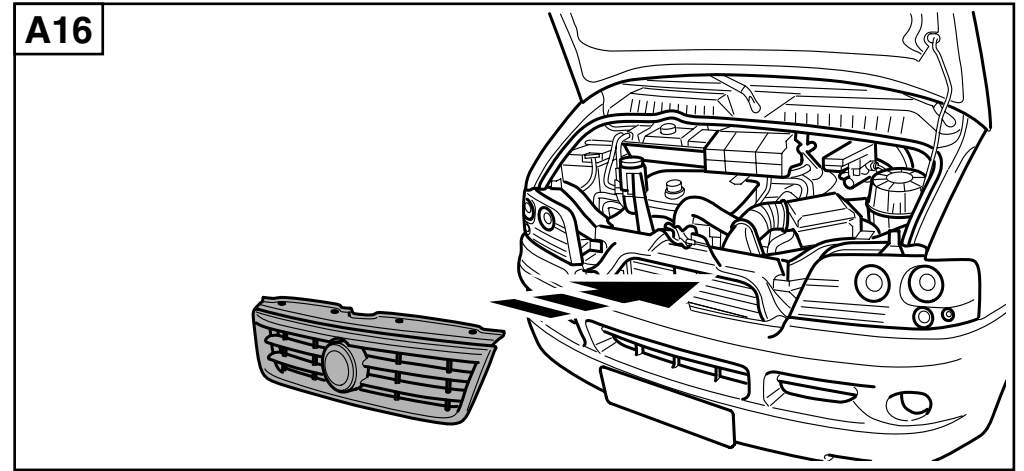
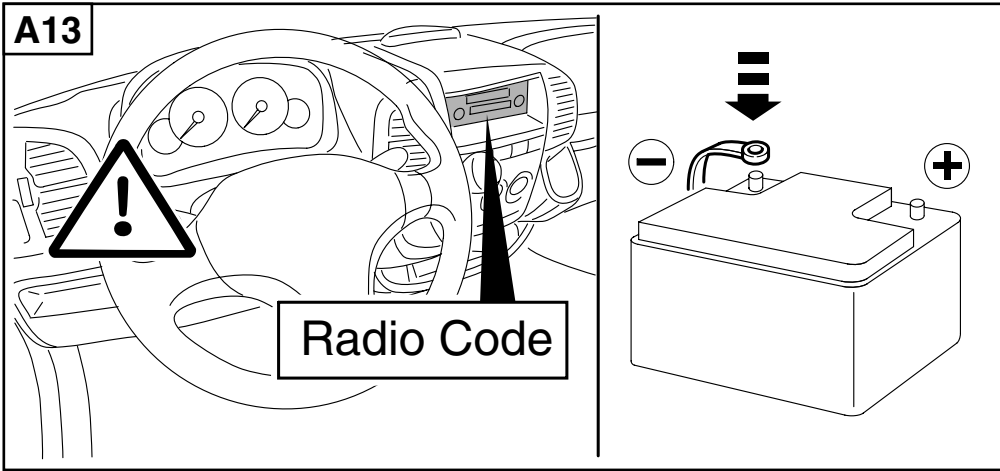


- D** Benötigte Montagewerkzeuge
GB Installation tools required
F Outillage de montage requis
NL Benodigd gereedschap
I Attrezzi necessari per il montaggio
S Nödvändiga monteringsverktyg
E Herramientas de montaje necesarias
FIN Tarvittavat asennustyökalut

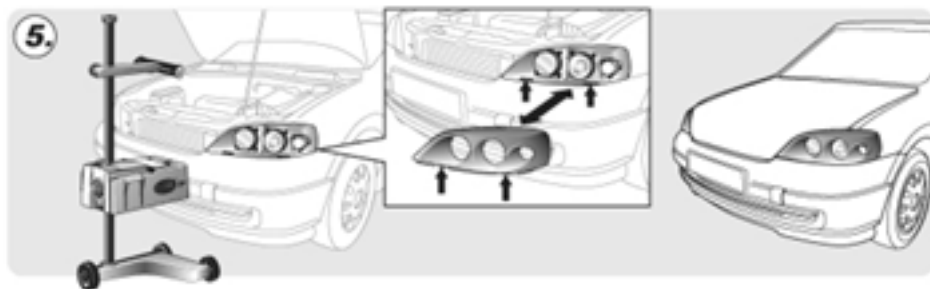
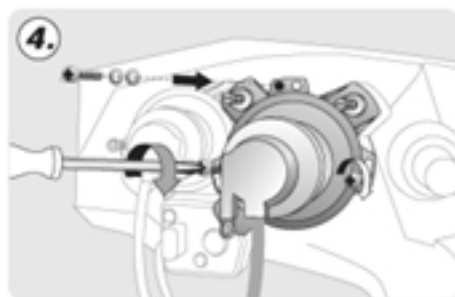
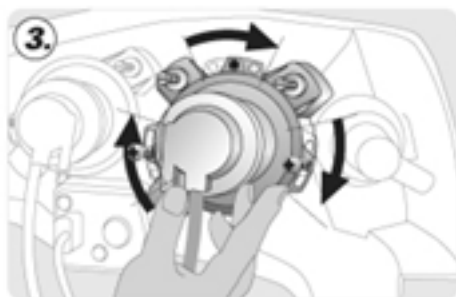
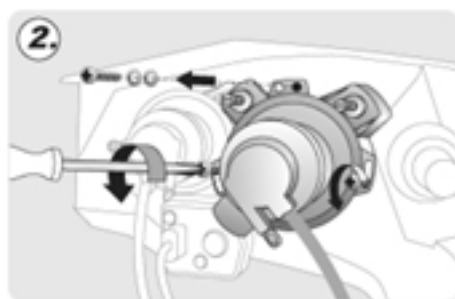
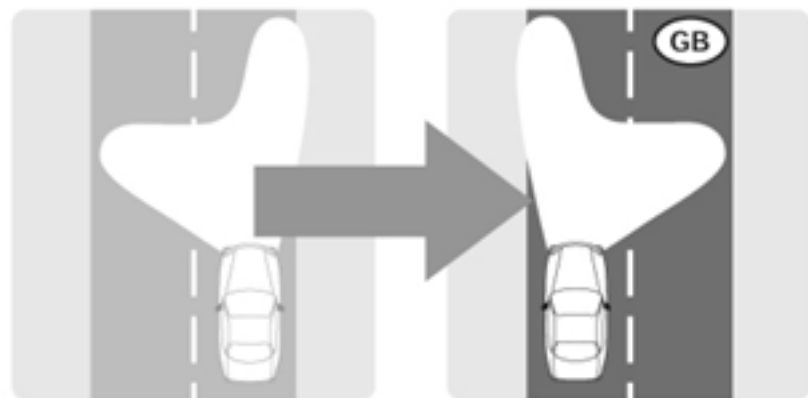




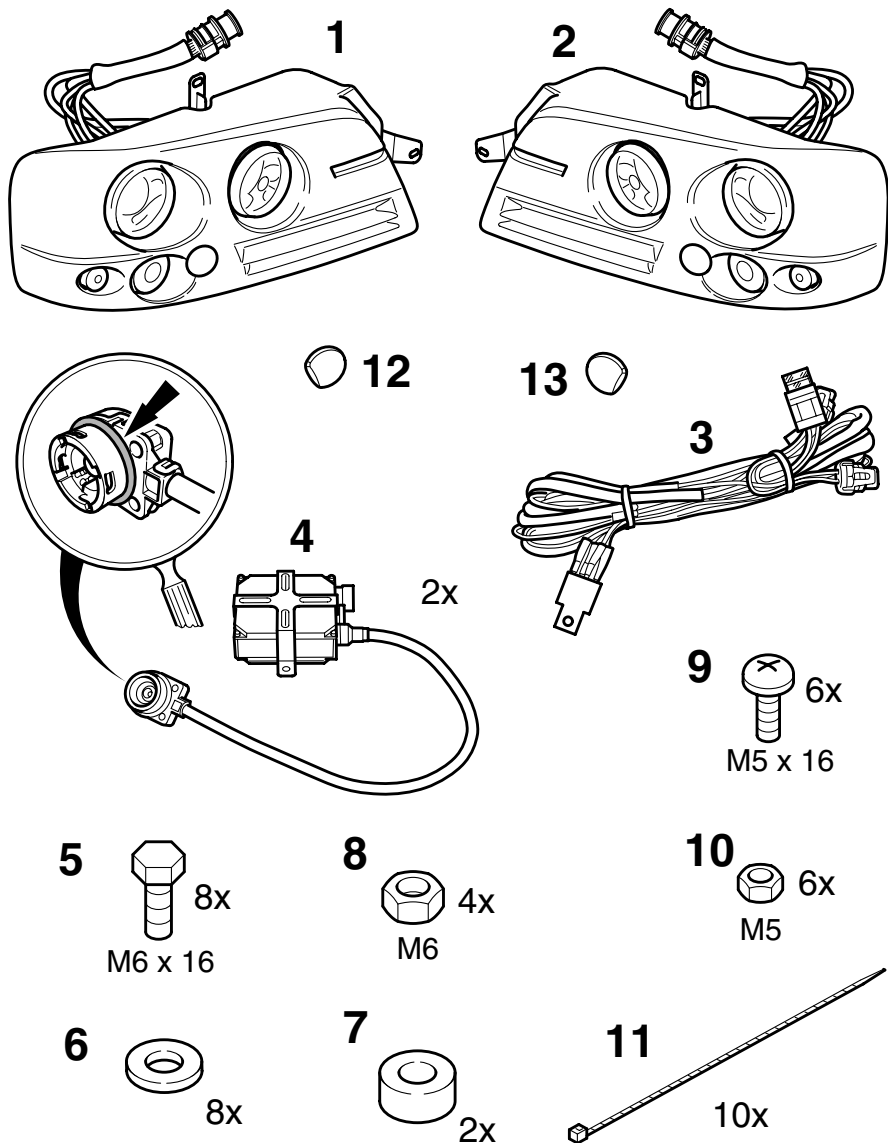




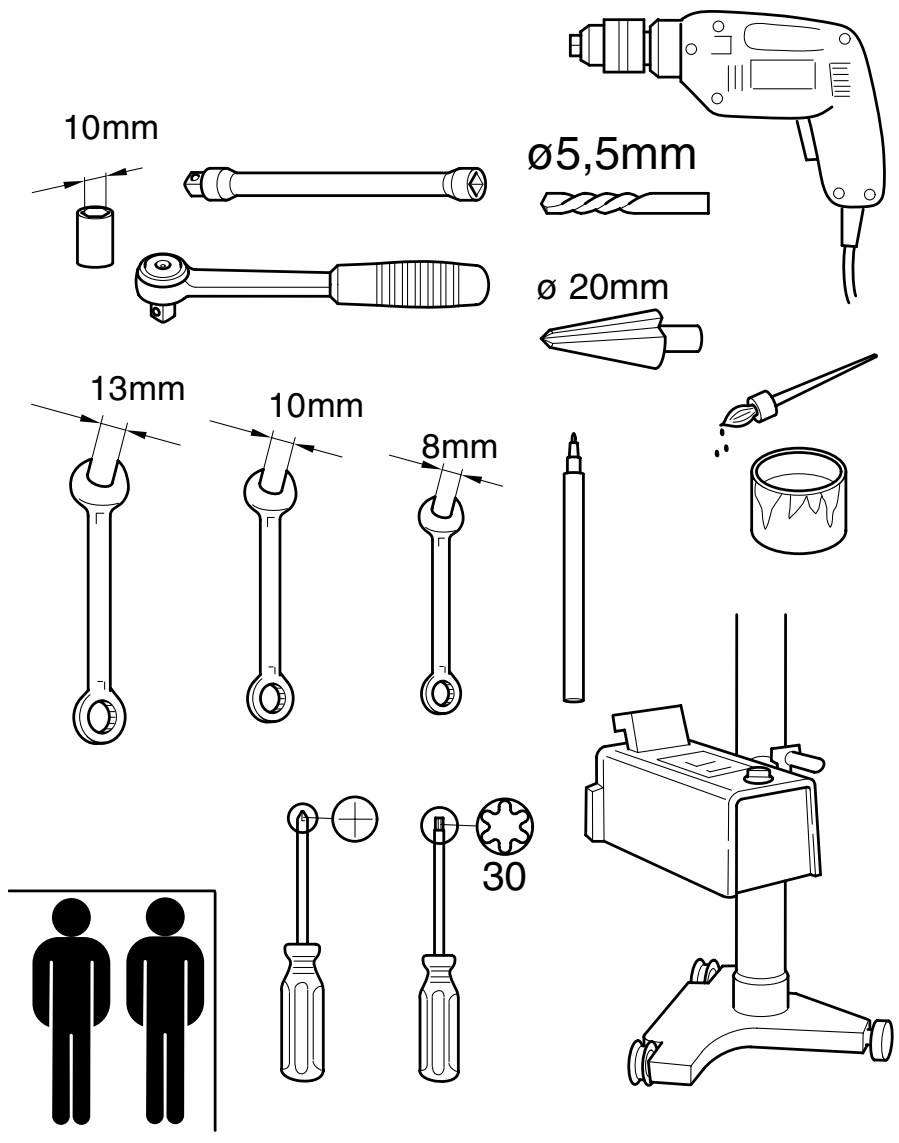
B1

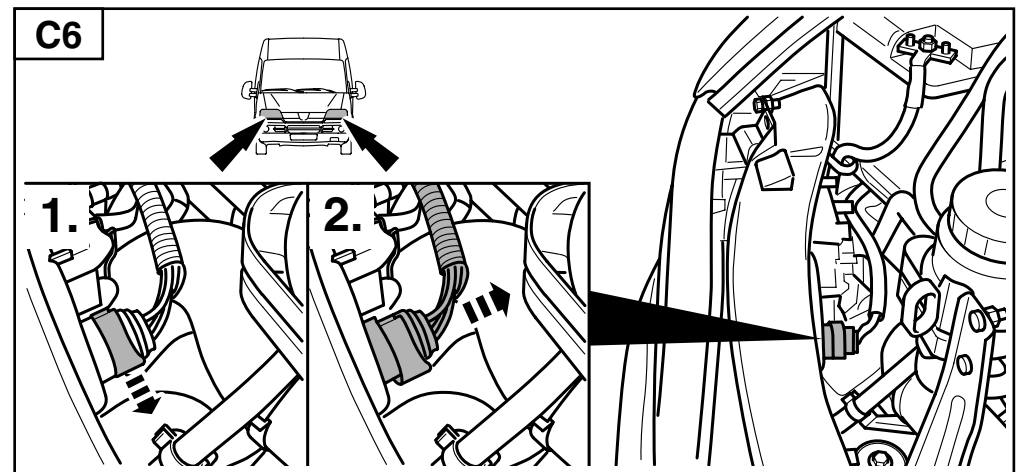
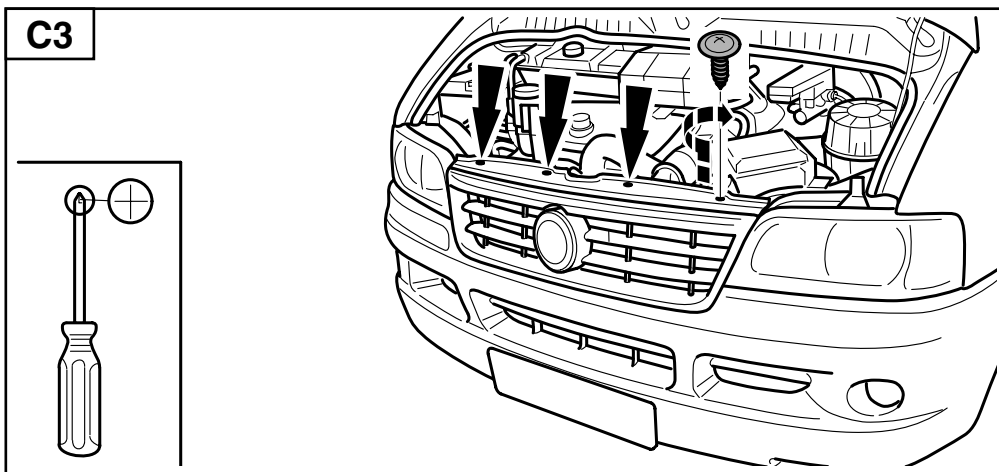
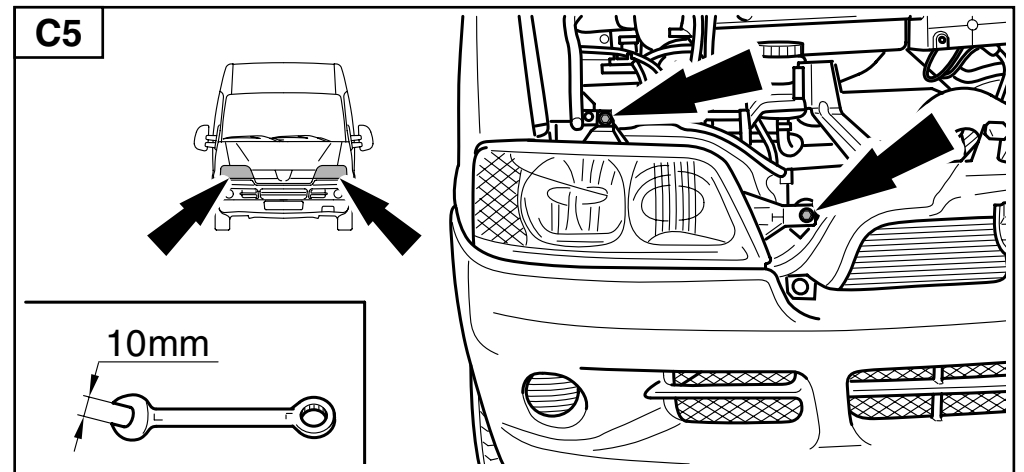
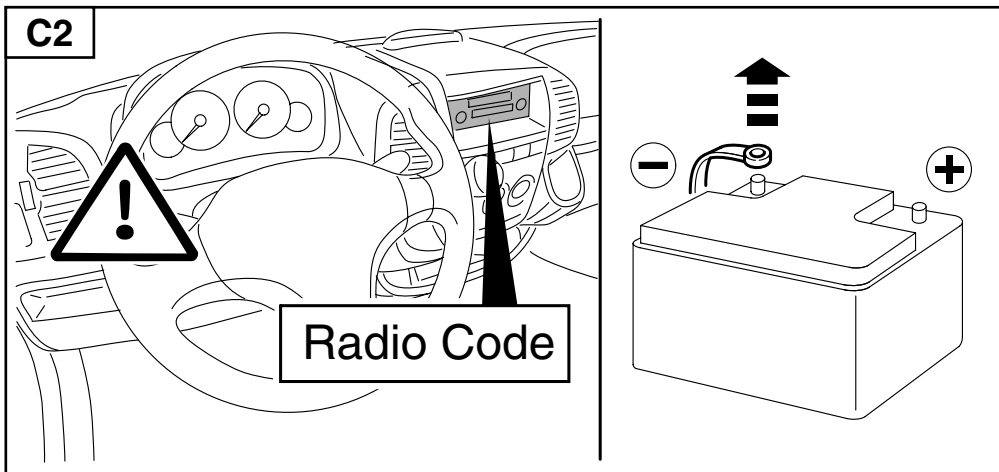
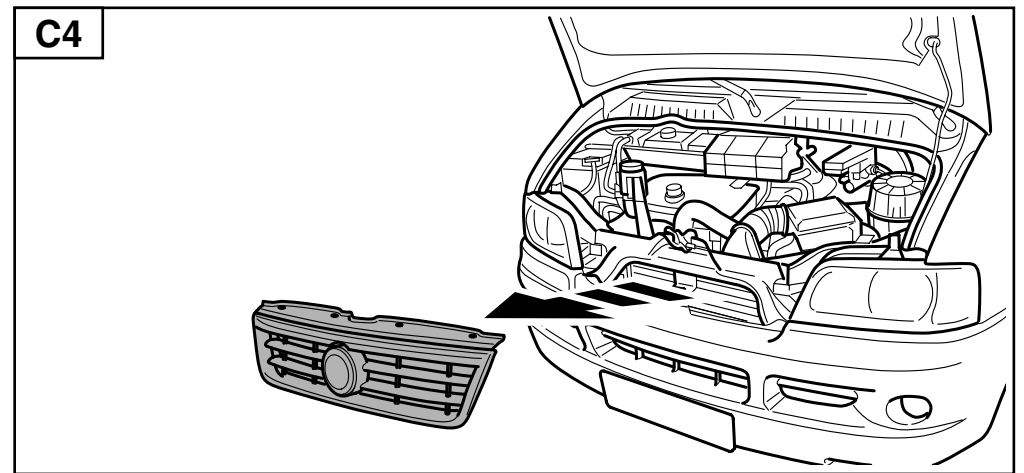
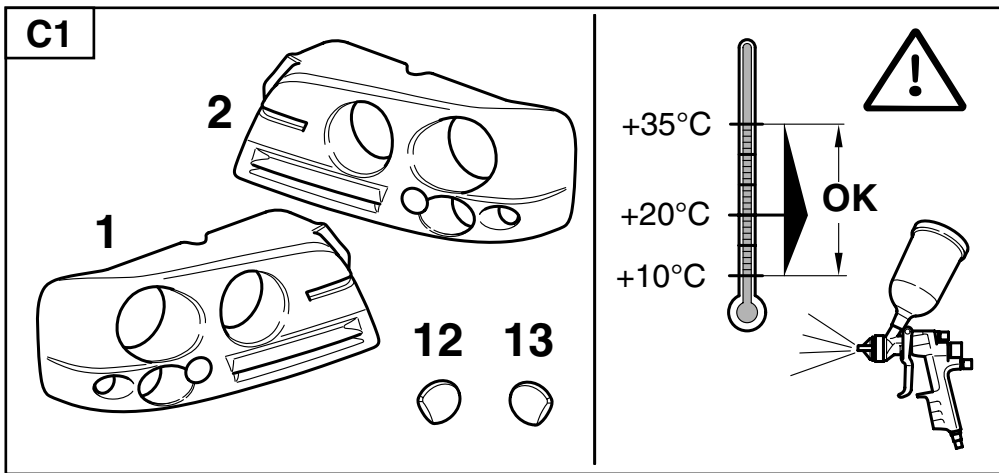


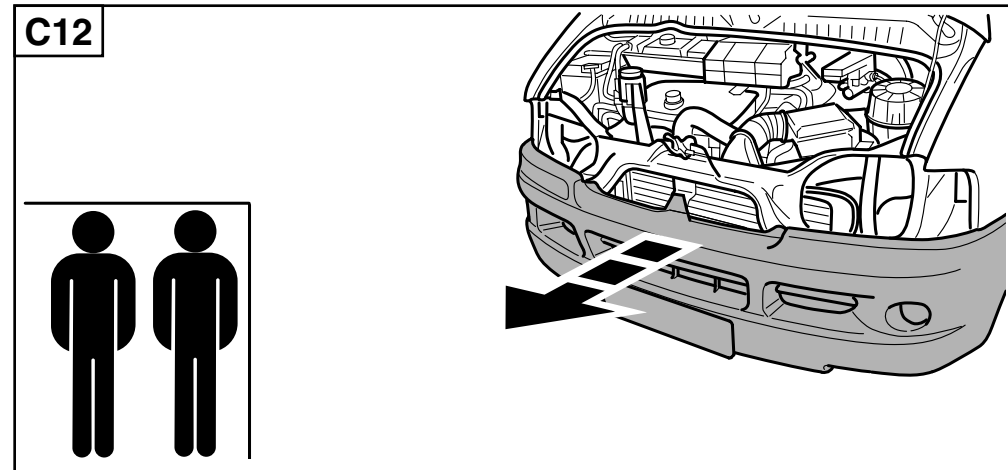
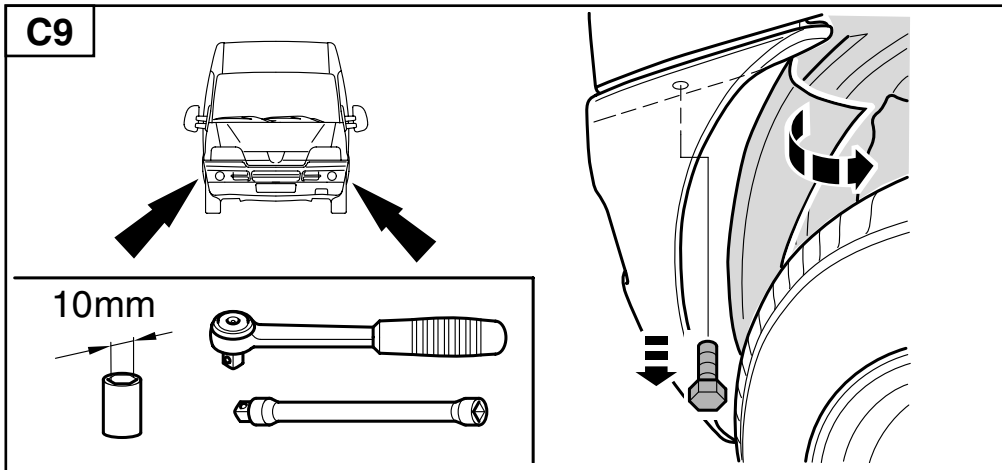
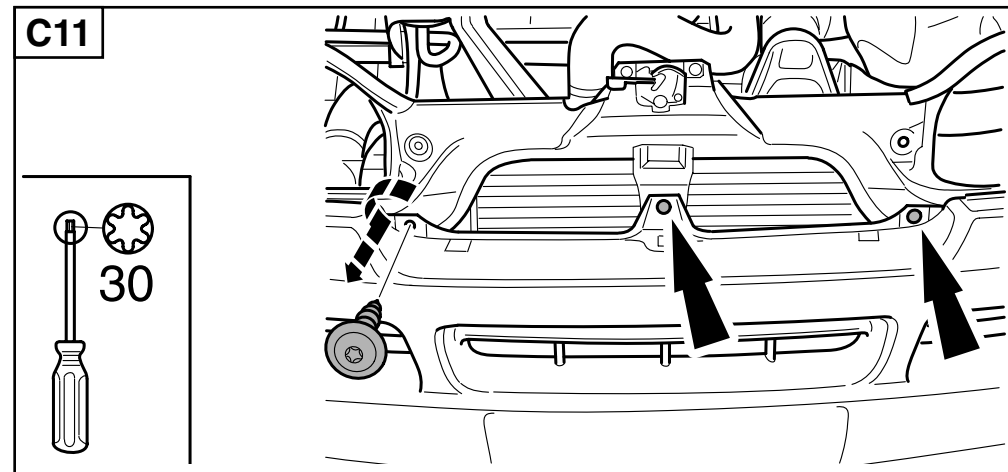
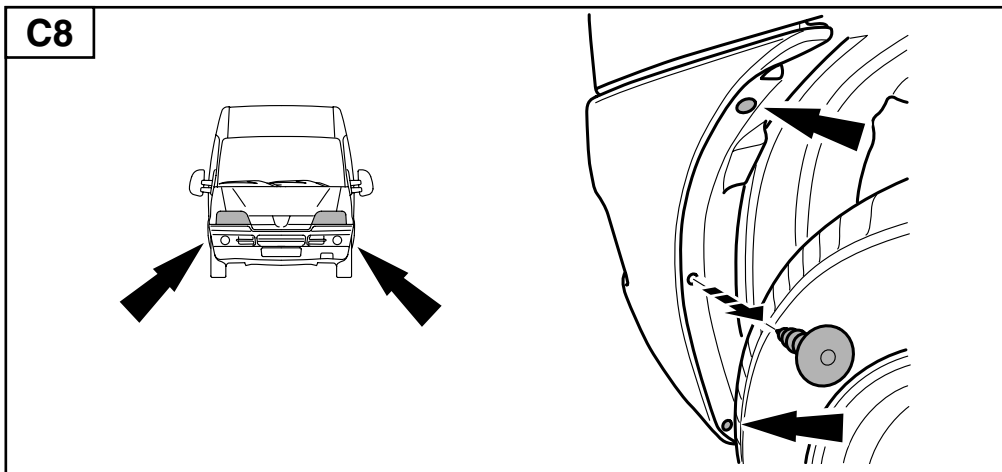
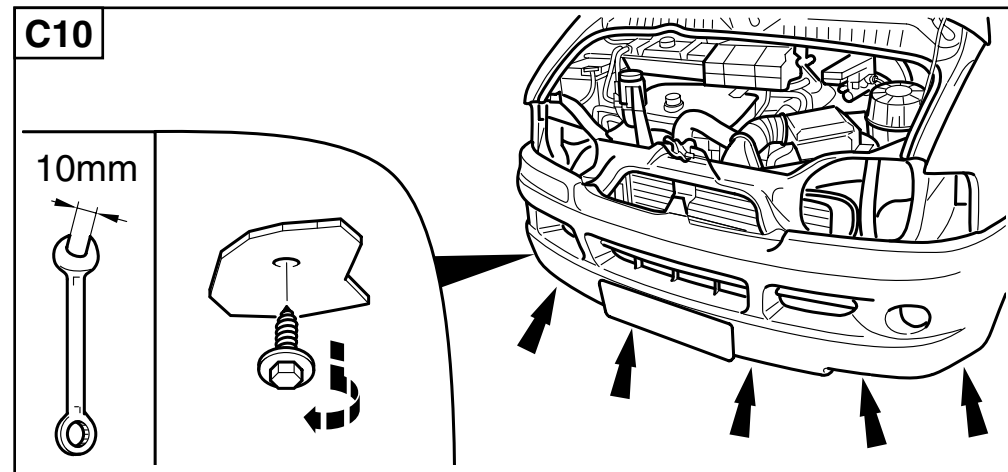
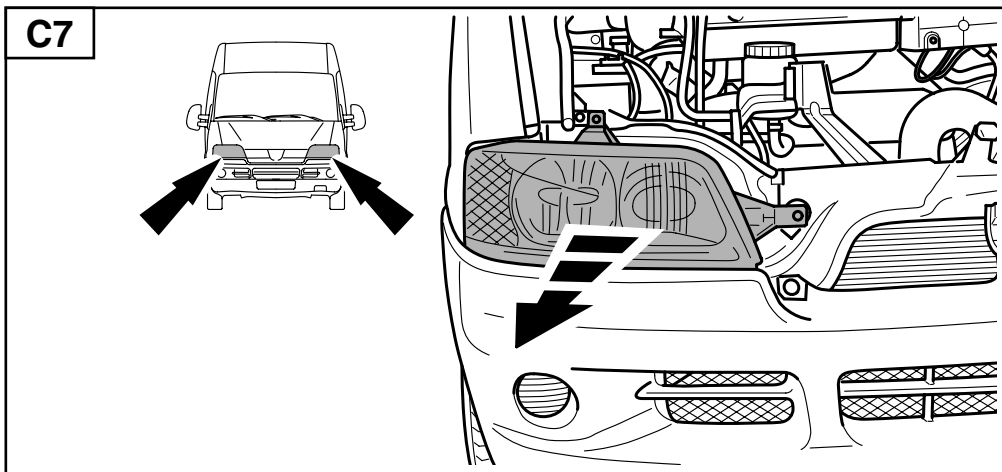
- D** Lieferumfang Nachrüstsatz Xenon Fernscheinwerfer
- GB** Scope of supply xenon driving lamp retrofit kit
- F** Fourniture Kit de projecteurs route au xénon
- NL** Inhoud inbouwset xenon verstralers
- I** Kit di forniture faro abbagliante Xeno
- S** Leveransomfattning eftermonteringsatts Xenon fjärrstrålkastare
- E** Volumen de suministro reequipamiento faros de largo alcance xenón
- FIN** Toimitussisältö ksenon-kaukovalonheittimien jälkivarustelusarja

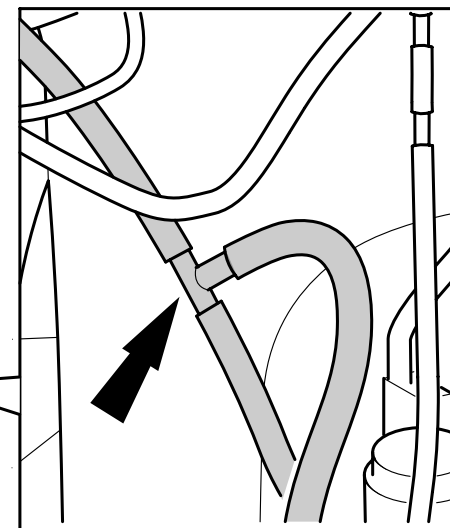
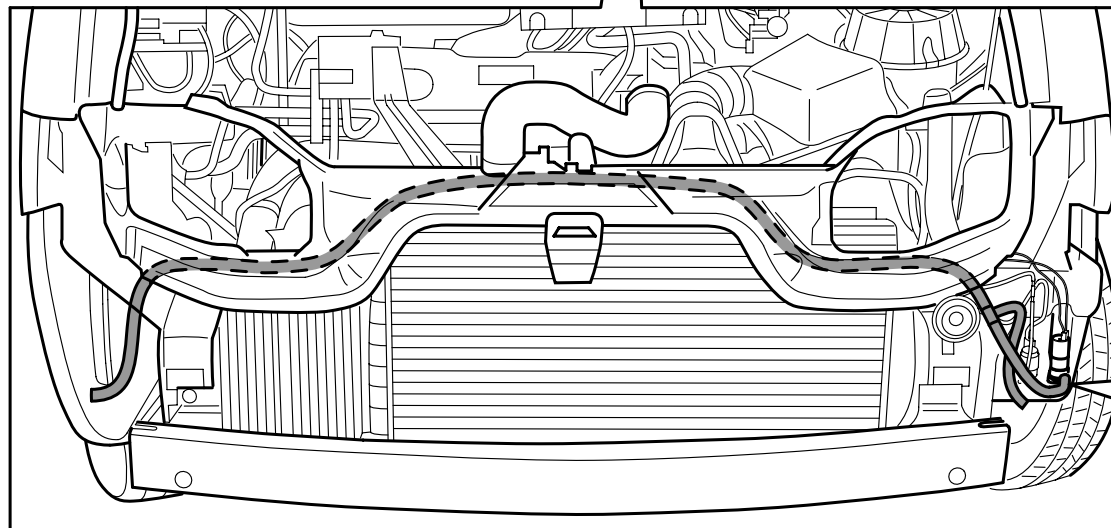
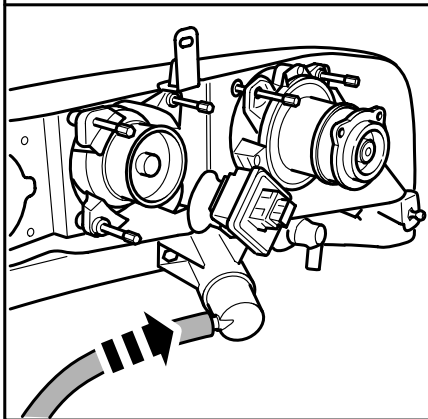
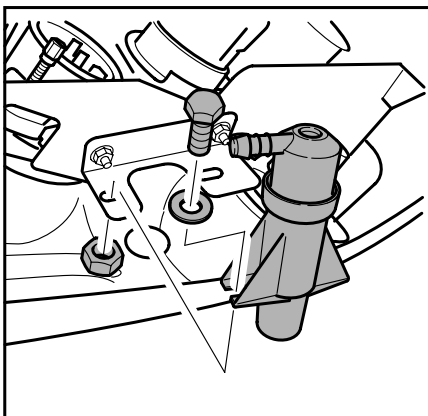
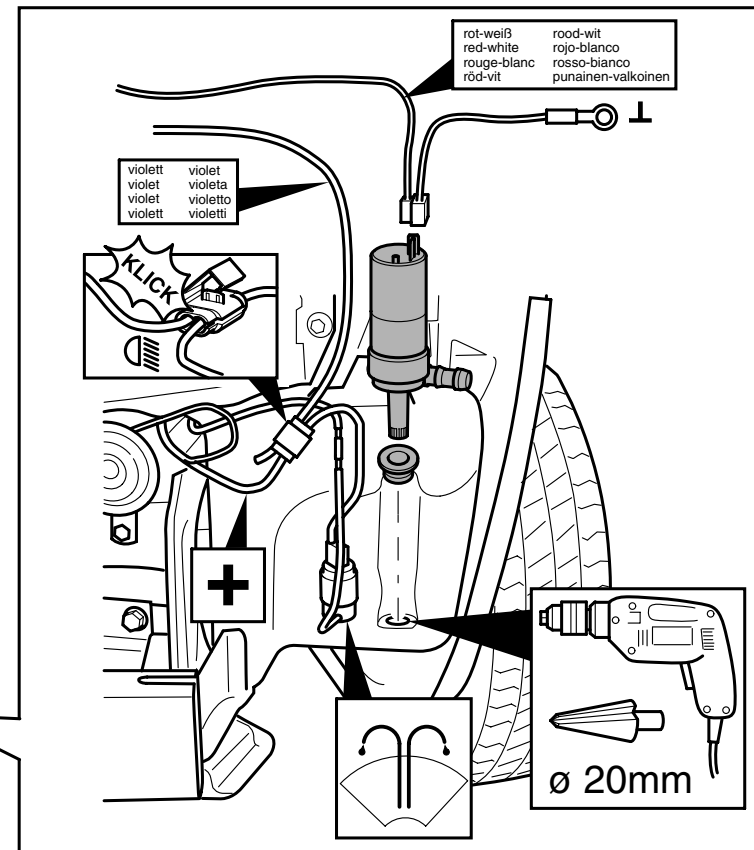
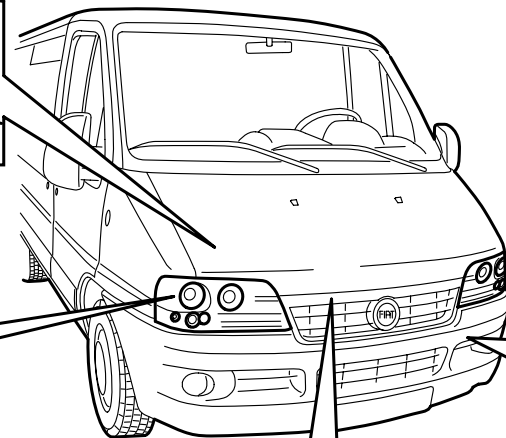
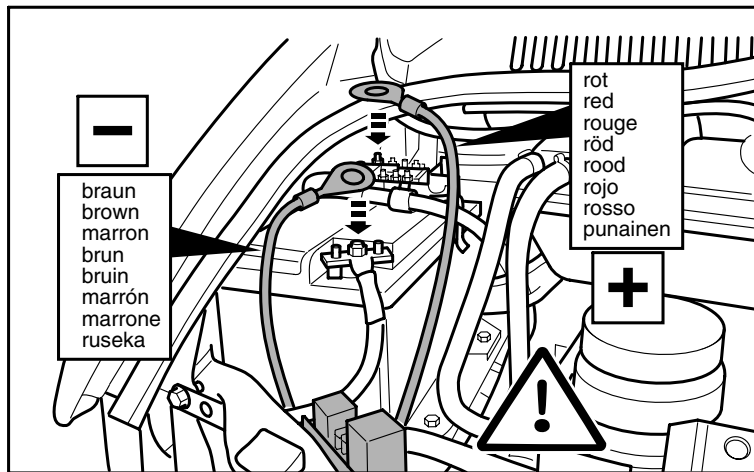


- D** Benötigte Montagewerkzeuge
- GB** Installation tools required
- F** Outillage de montage requis
- NL** Benodigd gereedschap
- I** Attrezzi necessari per il montaggio
- S** Nödvändiga monteringsverktyg
- E** Herramientas de montaje necesarias
- FIN** Tarvittavat asennustyökalut



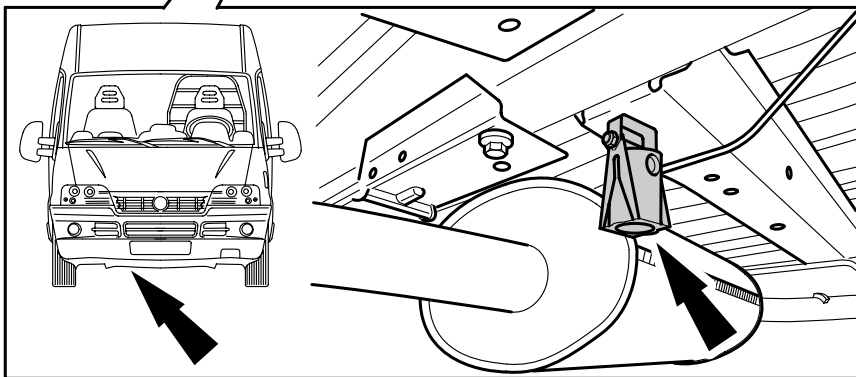
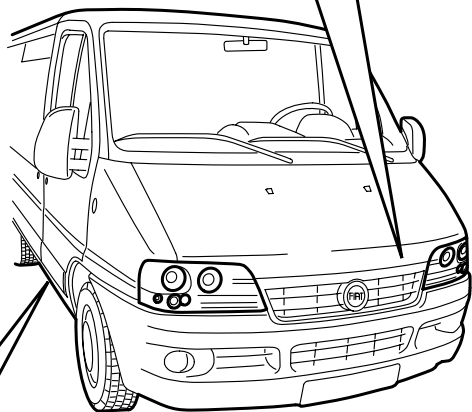
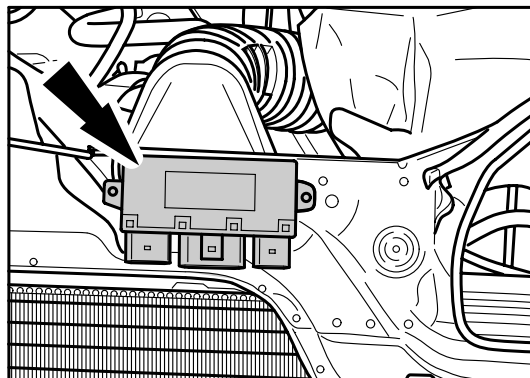




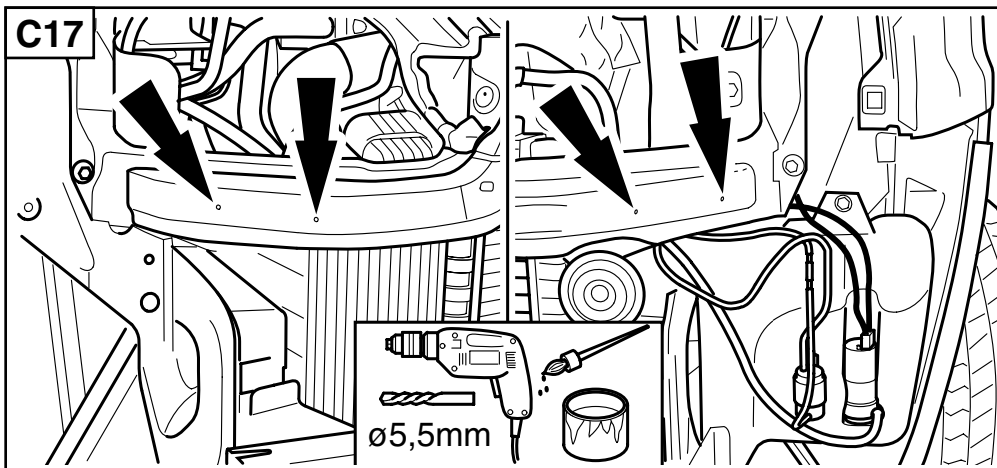
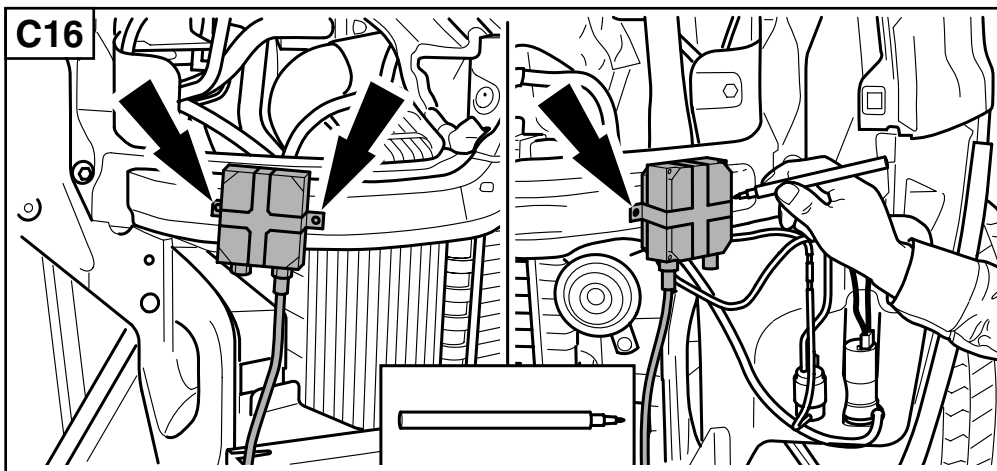
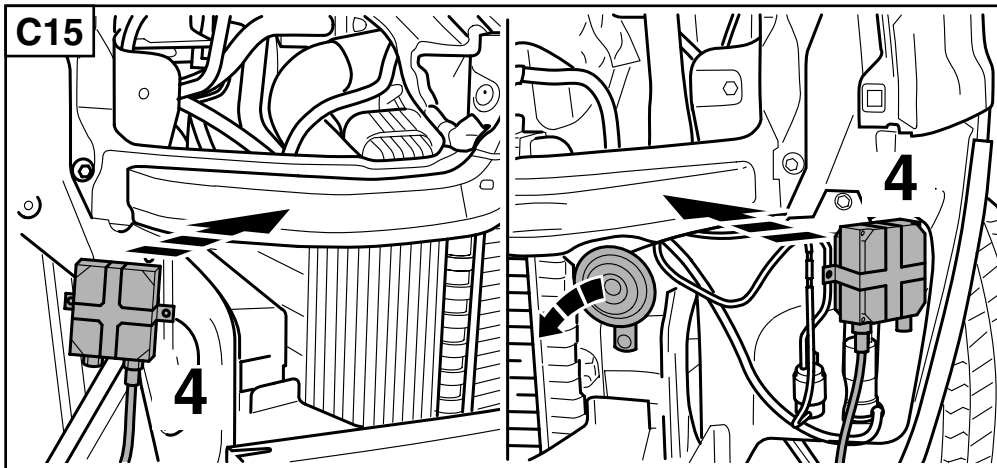


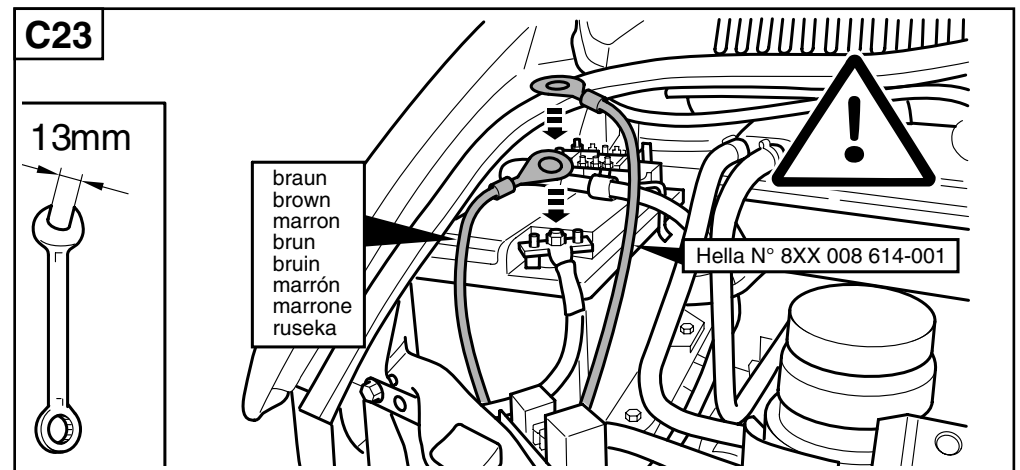
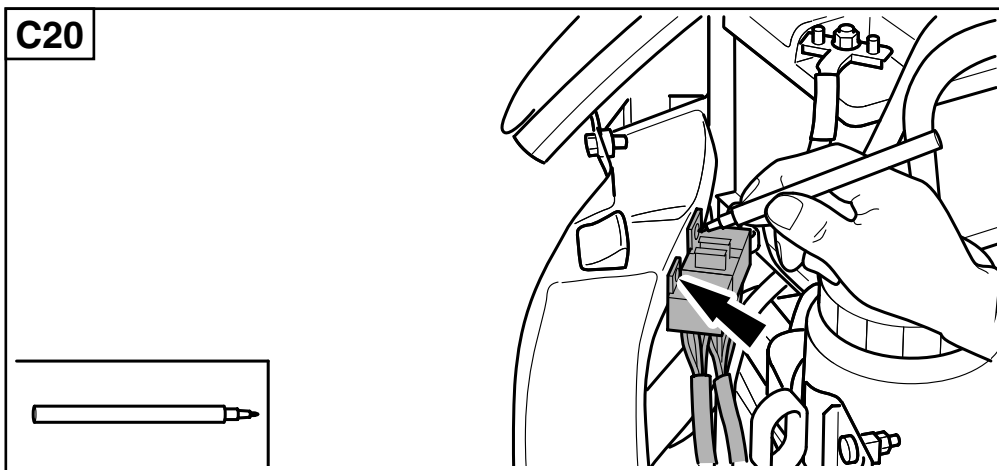
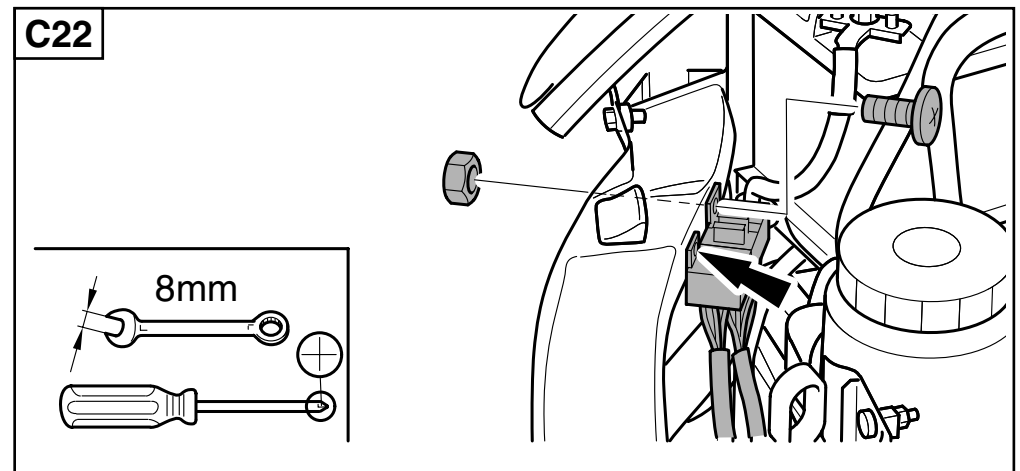
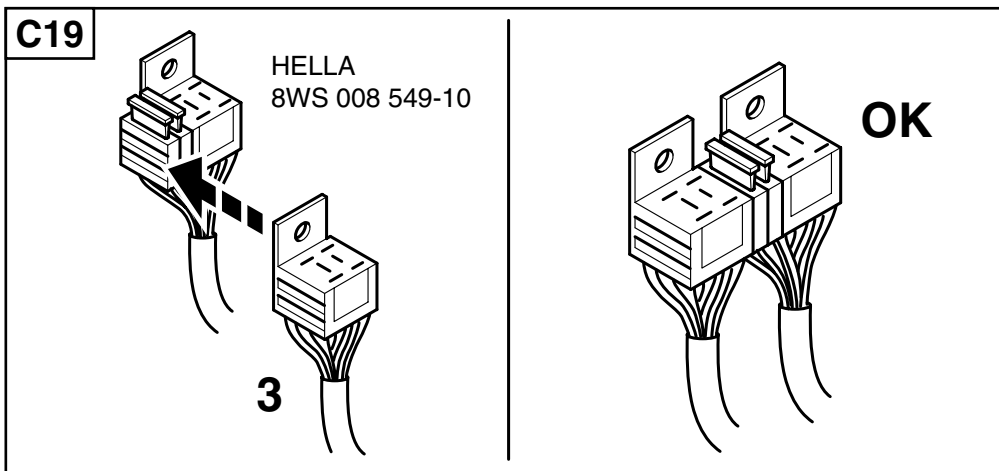
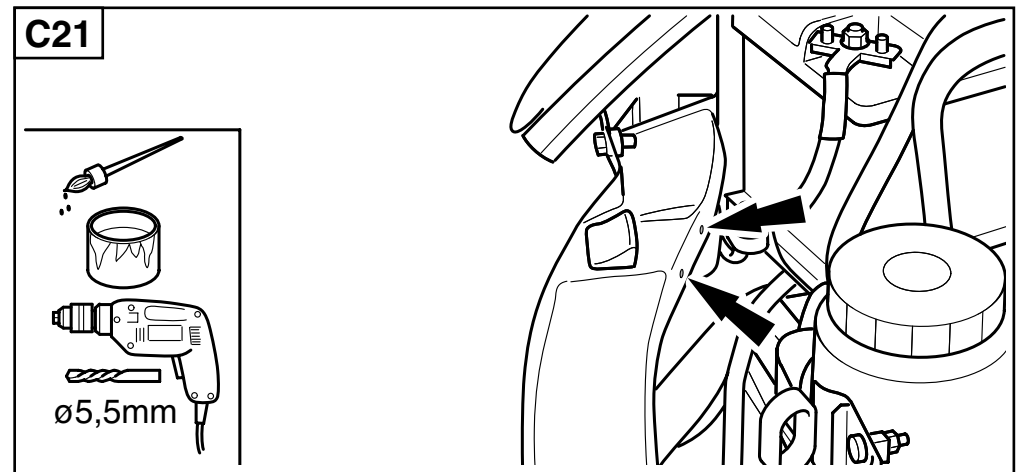
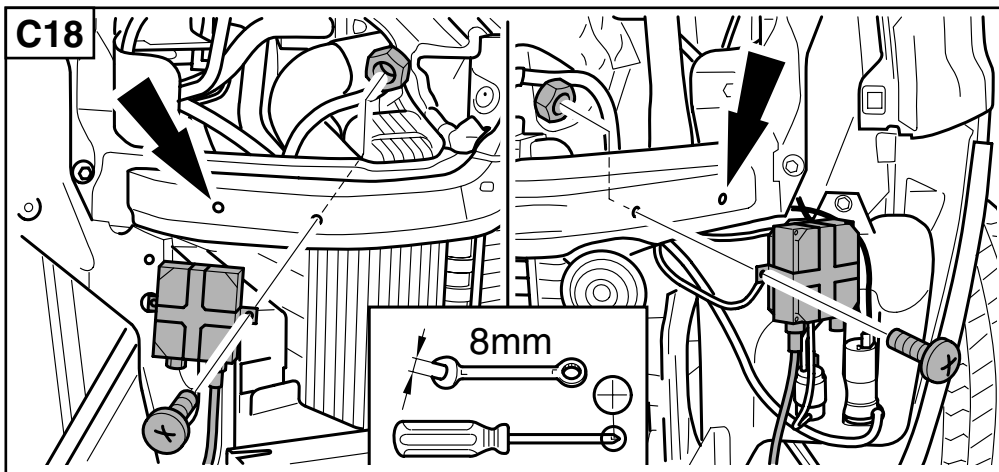
C14

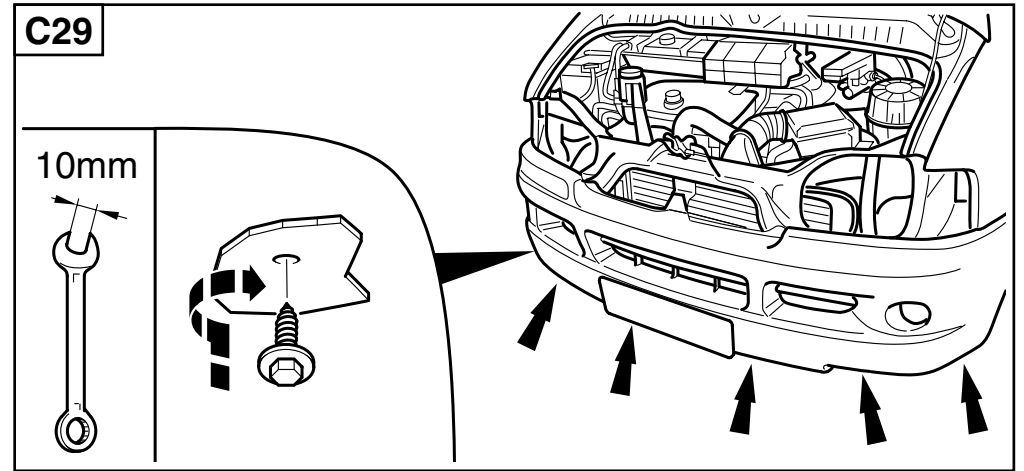
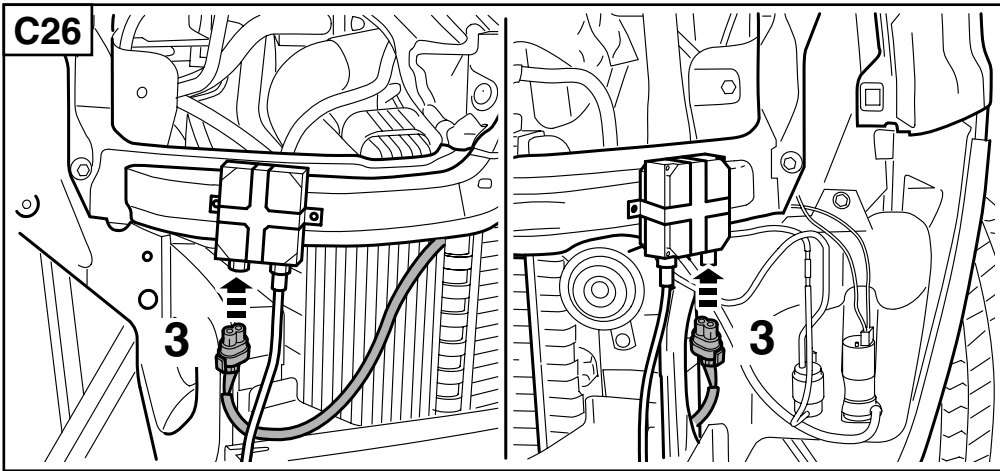
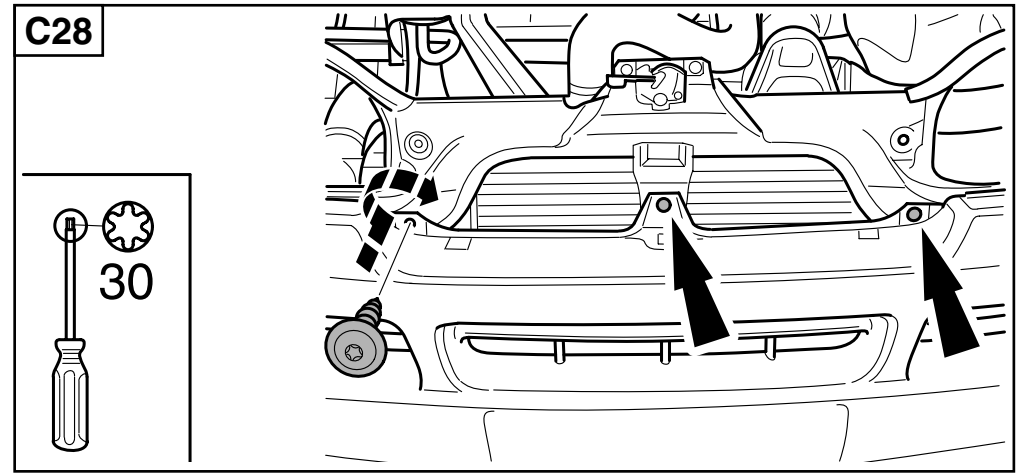
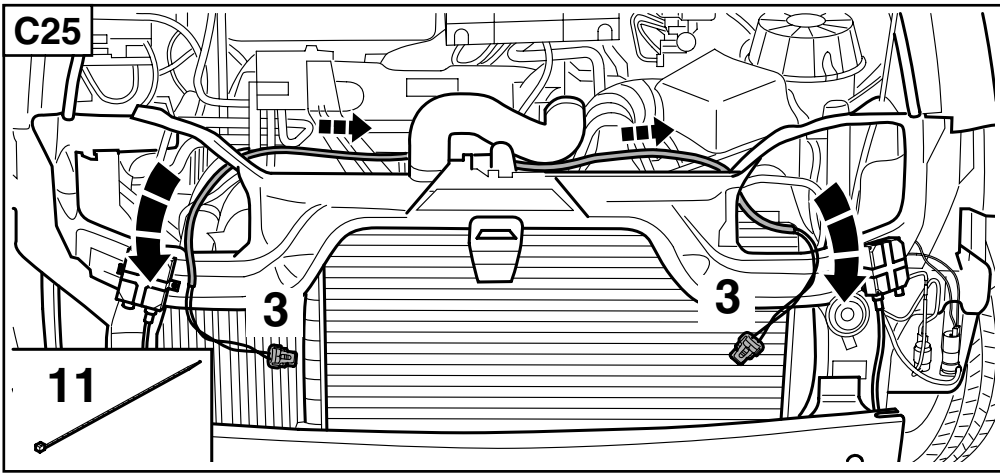
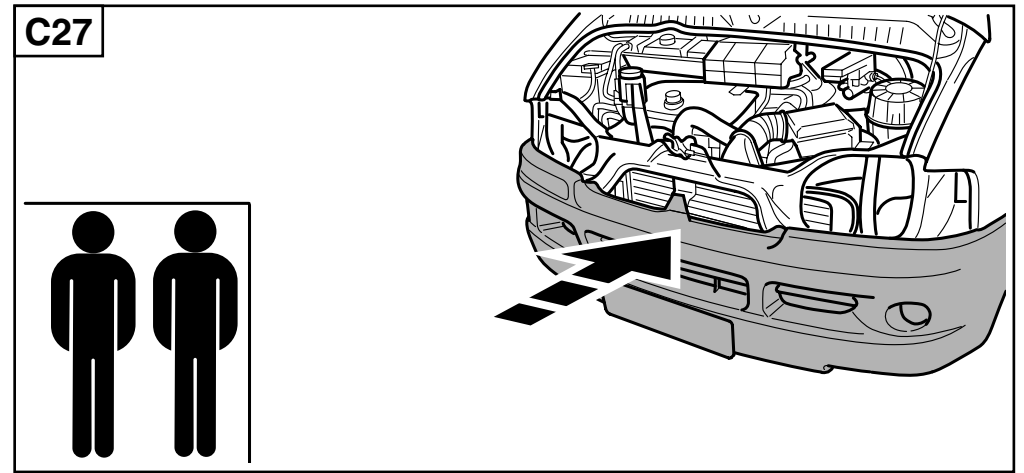
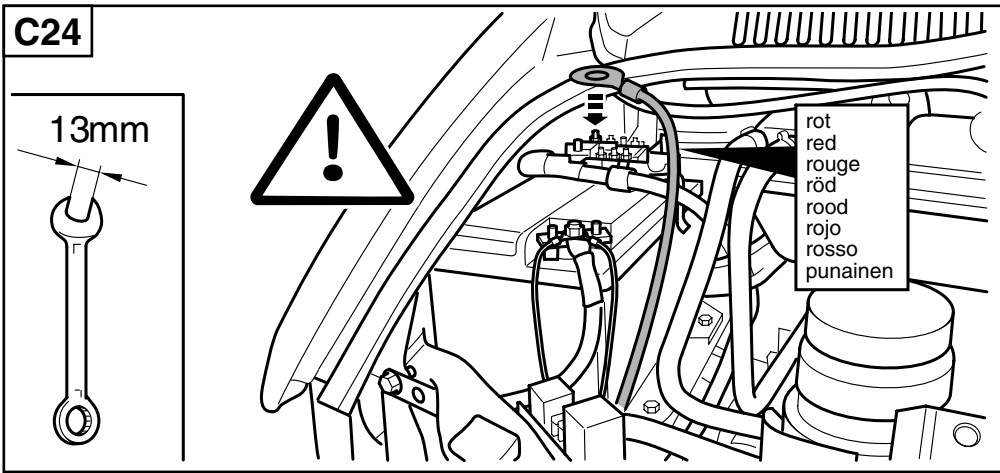
8XX 008 614-001

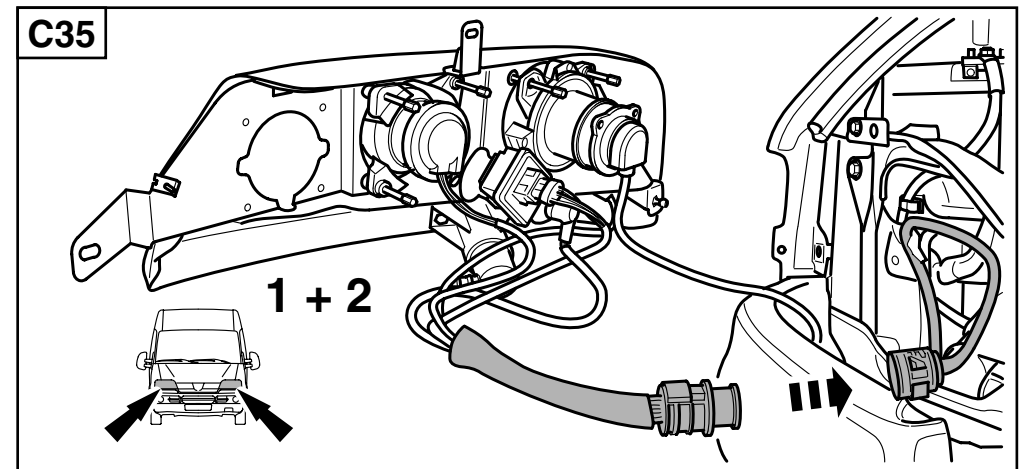
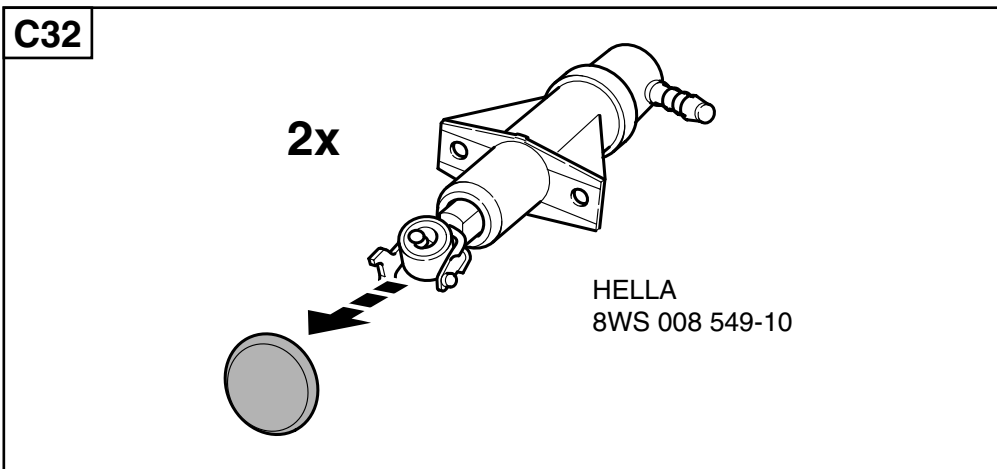
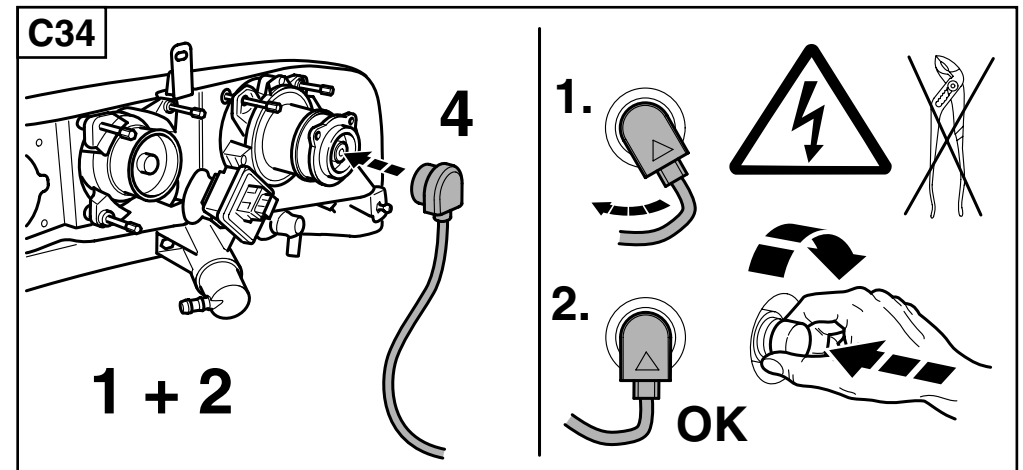
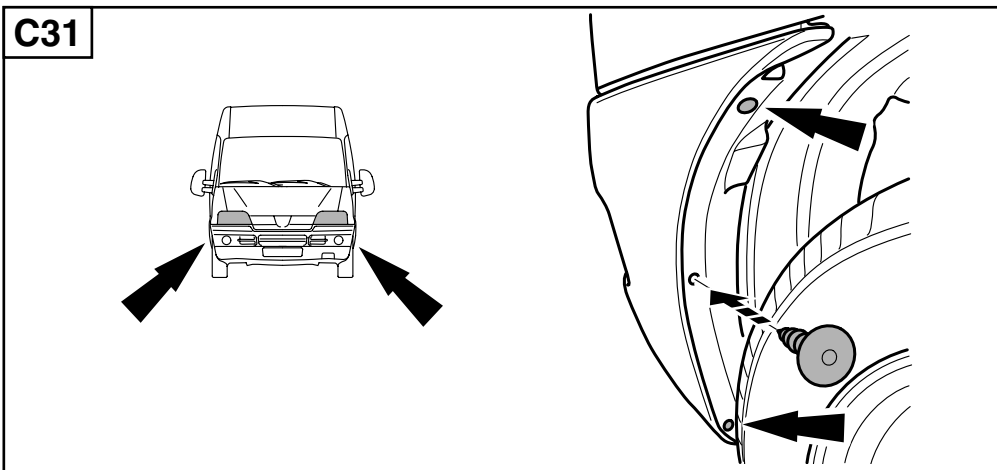
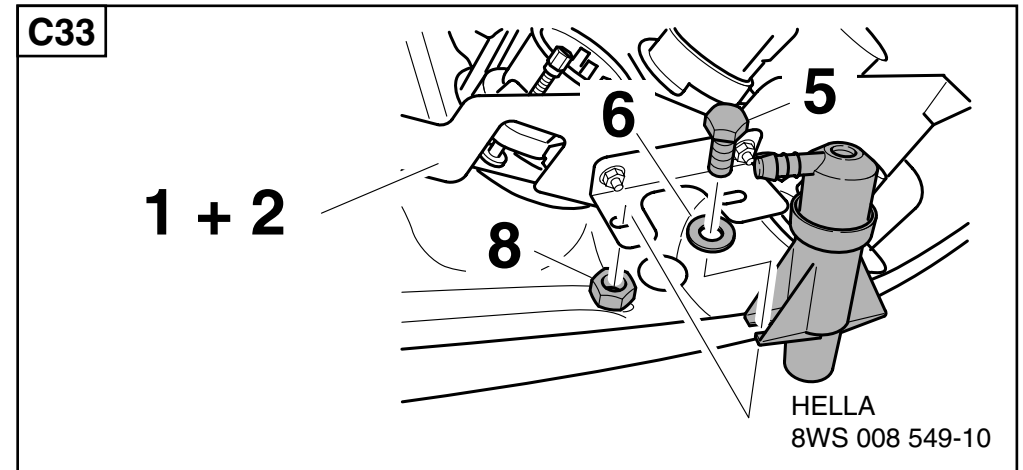
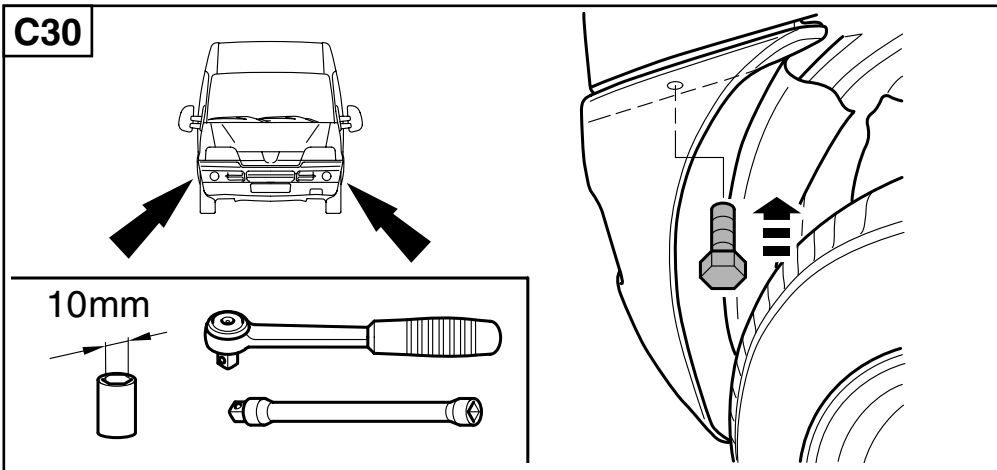


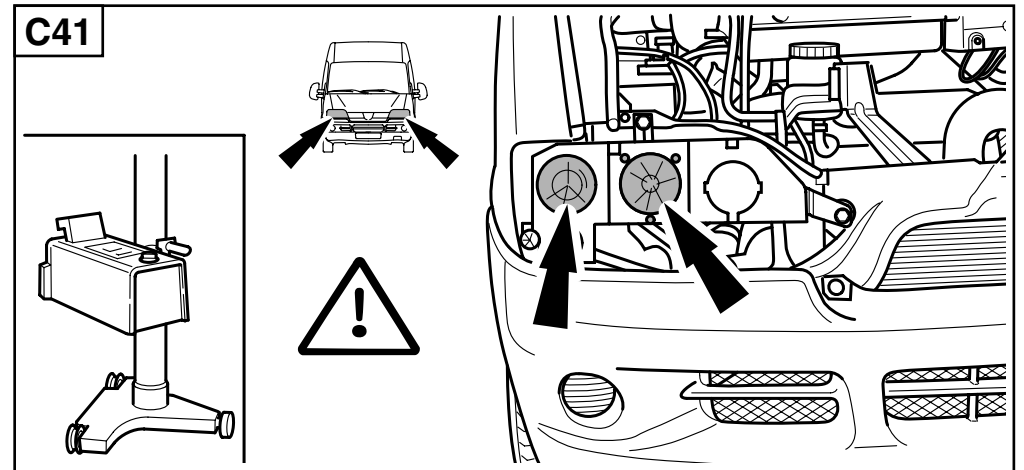
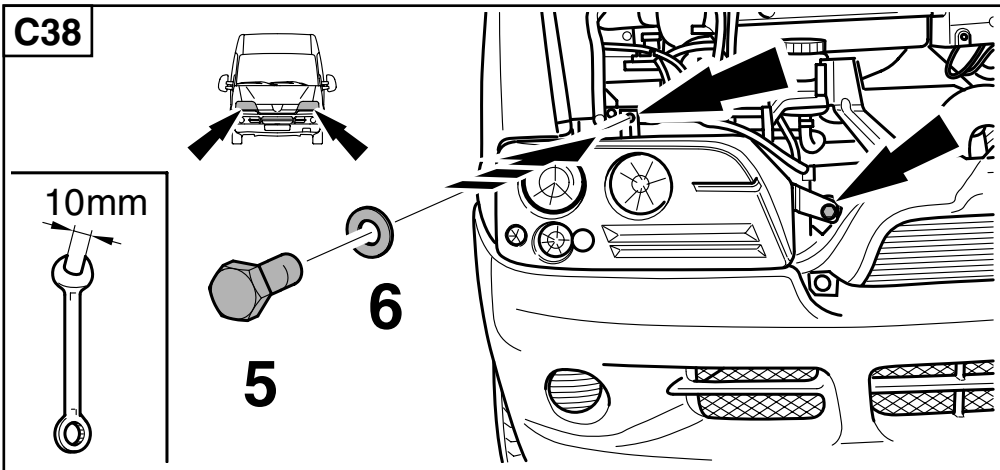
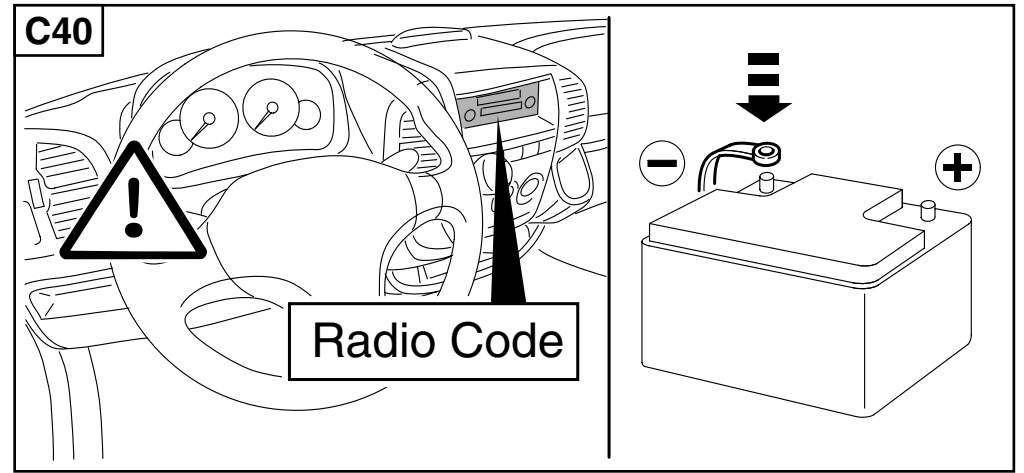
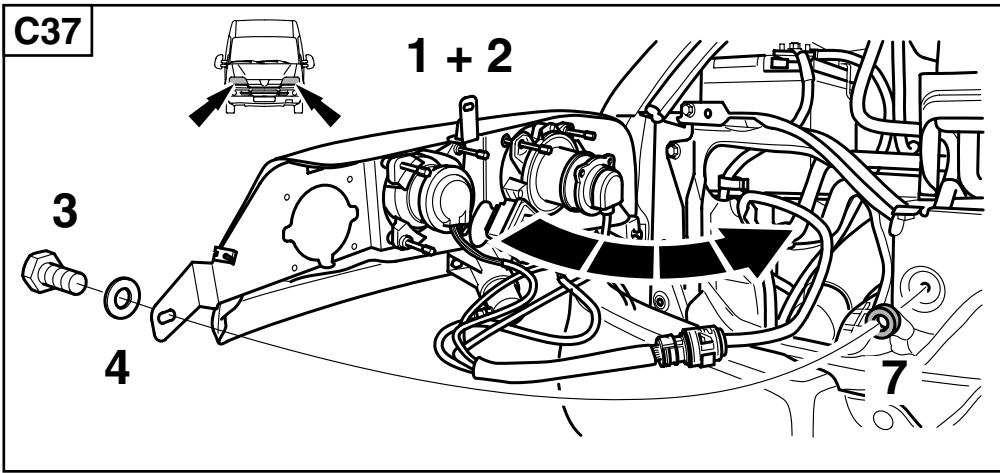
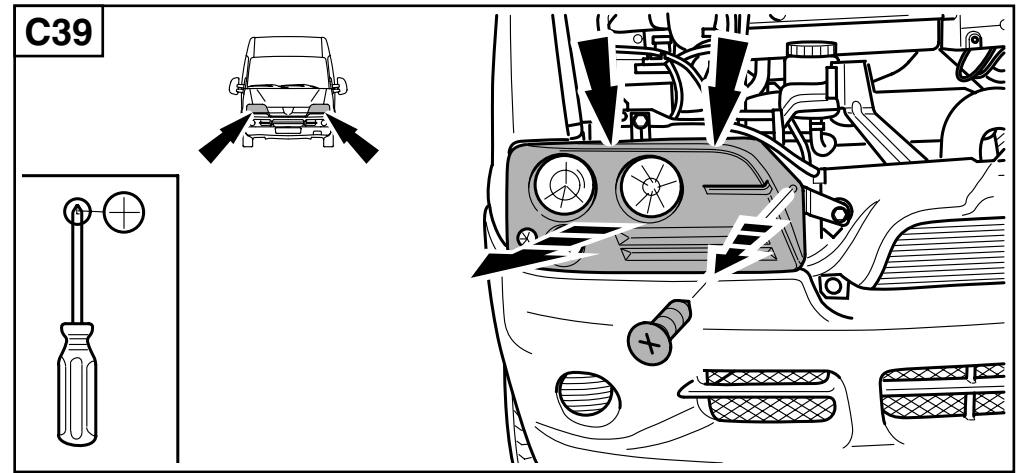
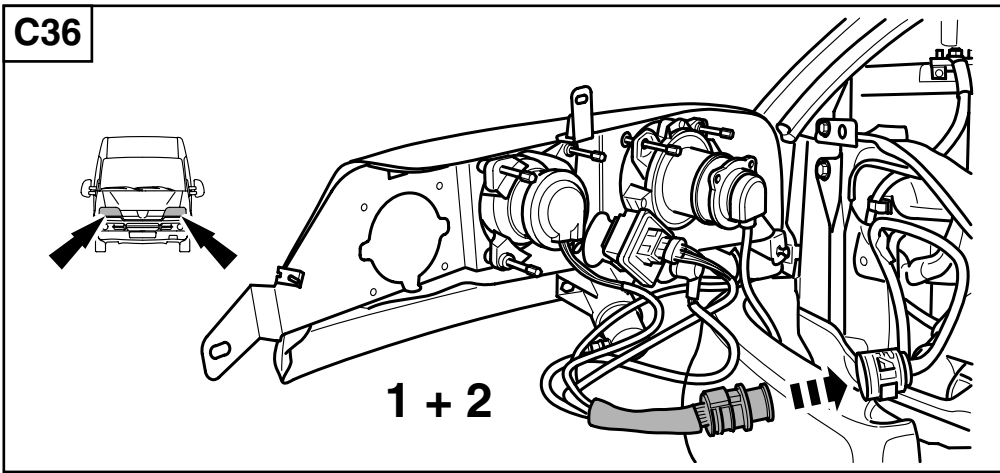
C15

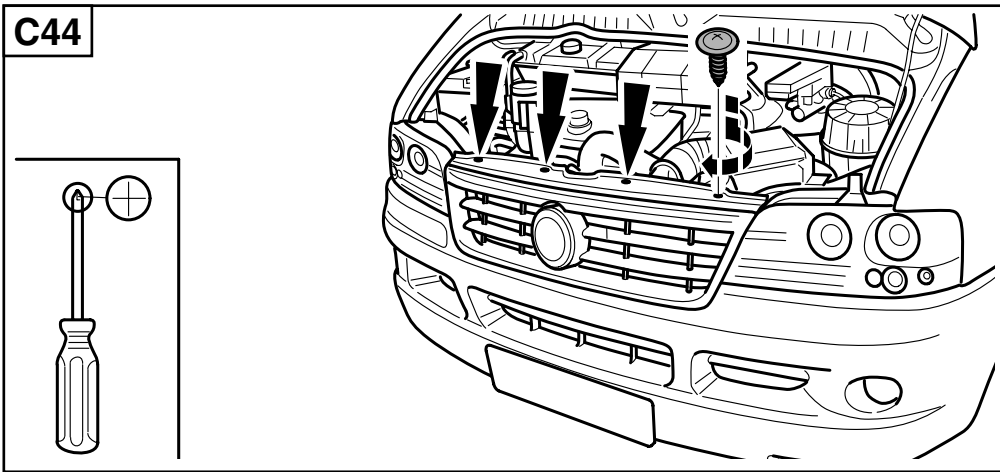
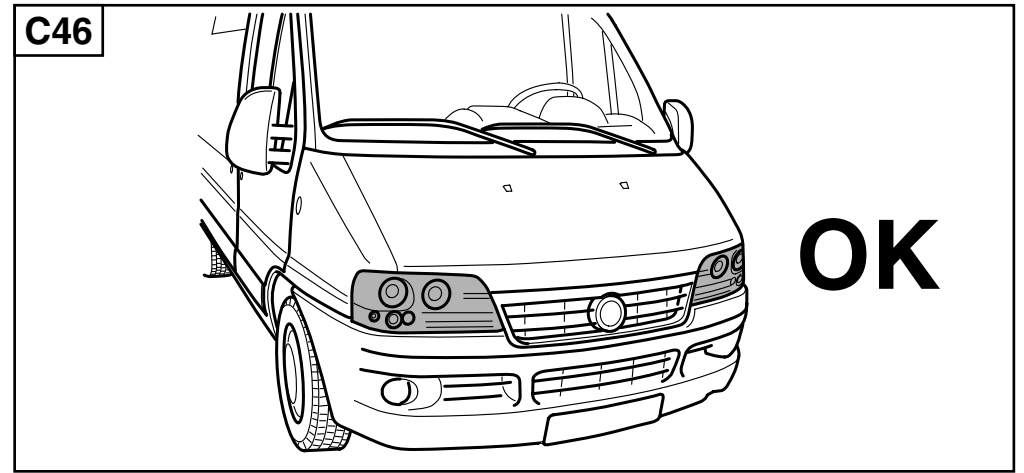
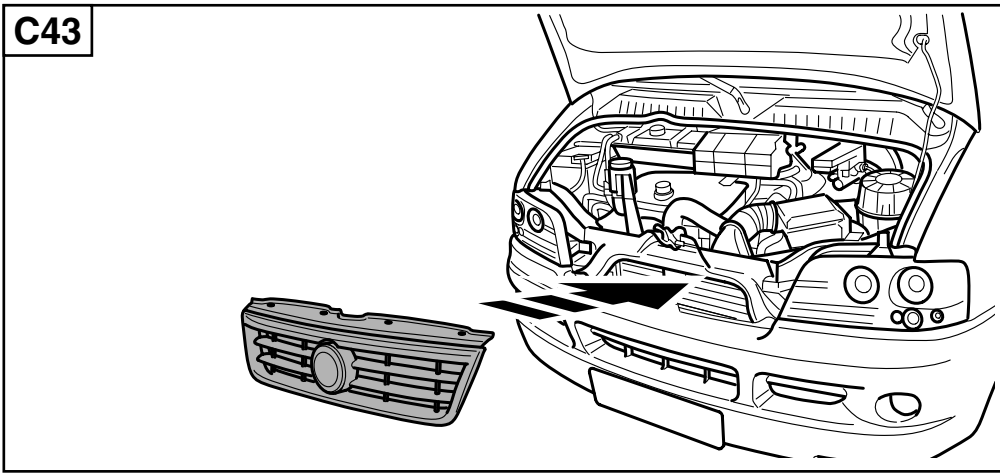
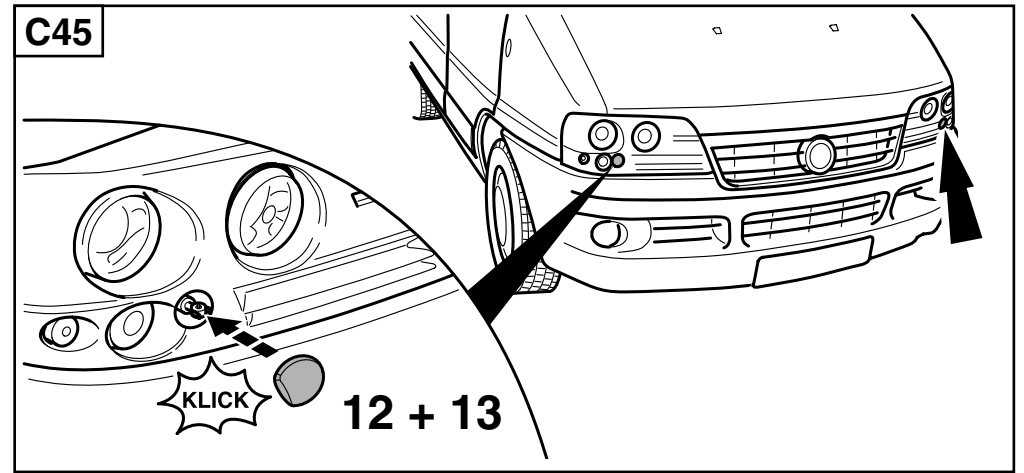
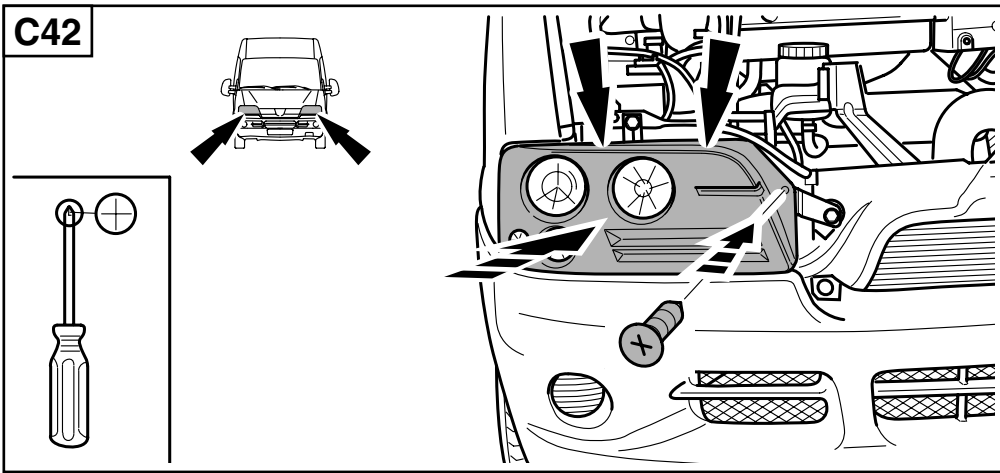


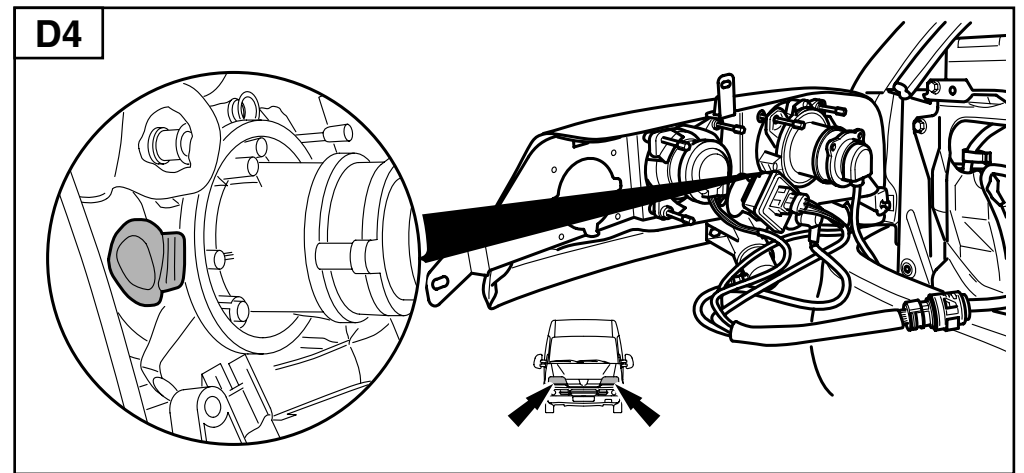
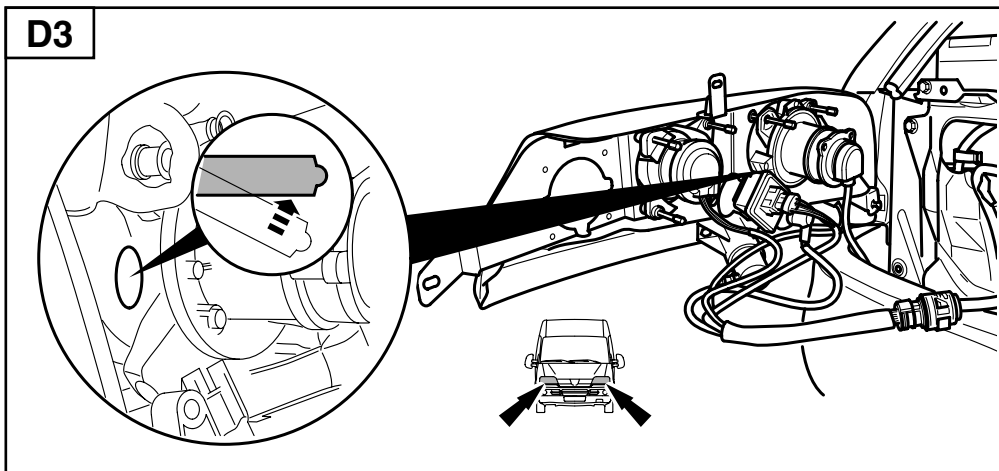
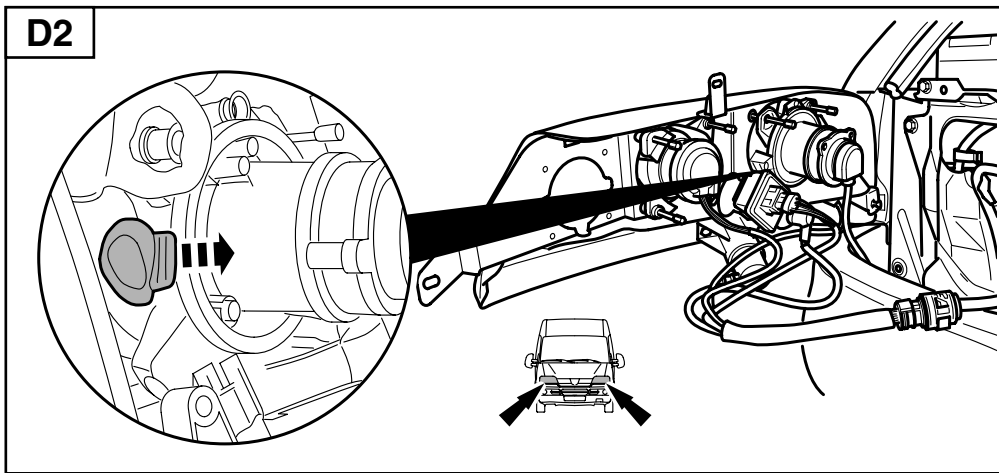
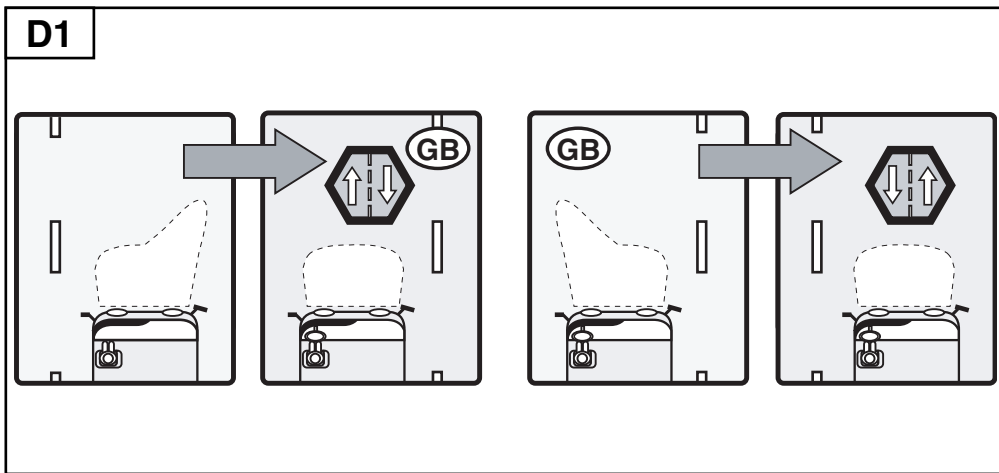












D Noch ein Tip:

Halten Sie die Streuscheiben sauber. Schmutz kann bis zu 80% an Lichtleistung schlucken. Sie fahren sicher, wenn Sie gut sehen und gesehen werden. Haben Sie Ersatz-Lampen und Sicherungen im Wagen? Wenn Sie Fragen oder Einbauprobleme haben: Rufen Sie den Hella Kundendienst an.

Telefon **D** (0180) 5 25 00 02 (Euro 0,12/Min.)

A 01/ 6 14 60-0

CH (01) 8 72 75 75

GB One more tip:

Keep the lenses clean. Dirt can absorb up to 80% of the light. You drive more safely when you can see and be seen well. Do you have spare bulbs and fuses in your vehicle? If you have any questions or installation problems: Contact your Hella stockist.

F Encore un conseil:

Maintenir propre les glaces des projecteurs car la saleté peut absorber 80% de la puissance lumineuse. S'assurer que des lampes de rechange et des fusibles sont à bord du véhicule. Pour tous questions ou problèmes de montage, contactez votre revendeur habituel.

NL Nog een tip:

Zorg er voor dat de glazen van de schijnwerpers schoon blijven. Vuile glazen kunnen een vermindering van wel 80% van de lichtopbrengst tot gevolg hebben. U rijdt veiliger als u goed ziet en gezien wordt. Heeft u ook reservegloeilampen en zekeringen in de auto? Indien u nog vragen heeft of montageproblemen tegenkomt, bel dan de Hella klantenservice / technische dienst.

telefoon **NL** 030-6 09 56 11

B 03-8 87 97 21

I Un ultimo suggerimento:

Tenete i vetri dei proiettori sempre puliti. Lo sporco può assorbire fino all' 80% dell'intensità luminosa. Quando vedete bene e vi fate vedere bene viaggiate più sicuri. Accertatevi di avere sempre nella vettura lampadine e fusibili di scorta. Se avete domande o problemi nel montaggio chiamate il Servizio Assistenza Hella:

Telefono: **I** 02.98.835.1

S Ytterligare tips:

Håll strålkastarglasen rena. Smuts kan reducera ljusutbytet med upp till 80%. Du kör säkrare om du ser och syns bra. Har du reservglödlampor och säkringar i bilen? Om du har frågor eller problem med monteringen: Ring Hella kundtjänst.

Telefon 0049 (0)180 5 25 00 02 (Euro 0,12 min.)

E Un consejo:

Mantenga los dispersores limpios. La suciedad puede absorber hasta el 80% de la luminosidad. Ver y ser visto es a este respecto el lema de seguridad. ¿Dispone usted en su vehículo de bombillas y fusibles de repuesto? Caso que tenga usted alguna consulta que hacer - acaso en relación al montaje -, llame al servicio de asistencia al cliente de Hella.

FIN Vielä tärkeä huomautus:

Pidä lasit puhtaina. Lika voi vähentää valaisutehoa jopa 80%. Puhtailla valonheittimillä näet ja näyt paremmin liikenteessä. Muista varapolttimot ja sulakkeet. Käytä ainoastaan korkealaatuisia tuotteita.