

250 % More Light*. 35% Less Energy Consumption* and Simply Good

Lighting technology:

This worklight is available with both a 35 W D2S xenon bulb and a 35 W D1S xenon bulb. Thanks to the xenon technology this worklight produces 250% more light in comparison with a 55 W halogen bulb, and the energy consumption is 35% less. A further advantage is the 5-times-longer average service life of the xenon bulb in comparison with a halogen bulb, through which expenditure due to bulb replacement is reduced considerably. Thanks to the light colour, which is similar to daylight, objects can be discerned more easily and more naturally in the dark. The brightness remains constant, even with fluctuating vehicle-electric-system voltages, between 9-16 V in the case of 12 V devices and 18-32 V in the case of 24 V devices.

Housing:

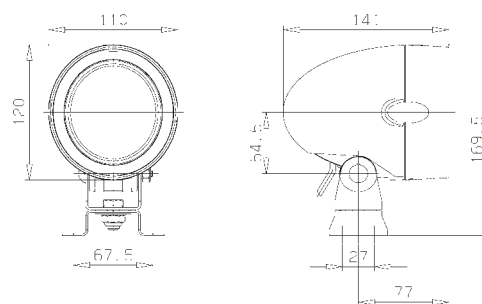
The housing of this sturdy worklight is made of glass-fibre-reinforced plastic. This is resistant to acid and keeps the housing free of corrosion. In the case of worklights 1GM 996 135 001, -041 and -051, a complete cable set including fuses and relay is supplied for power connection. The ballast (3rd-generation) is securely connected to the worklight via a 300 mm-long cable. The worklights 1GM 996.135-101 and -111 are supplied with a D1S bulb and 3000 mm connection cable, but without ballast. A 4th-generation ballast and cable set are available as accessories.

To protect from the effect of force from outside, the light is supplied with a hardened lens which is protected via a protruding lens carrier frame. All steel parts are made of stainless steel, i.e. resistant to seawater. The bracket system ensures optimum adjustability and offers stable four-point fastening. A special damping system patented by Hella and located in the base of the worklight protects the xenon bulb from shocks. As a result, this worklight is suitable for extreme applications, such as mounting on construction machinery.

Tip:

In order to be able to guarantee the maximum illumination time of the xenon bulb, the worklight should be used in a horizontal position with no more than $\pm 30^\circ$ deviation.

**In comparison with a halogen bulb*



Mega Beam Xenon

Technical Data Mega Beam Xenon

Rated voltage (U _N):	12V	24V
Recommended inclination angle :		
-001 / -041 / -051	10 - 15°	
-101	10 - 20°	
-111	5 - 10°	
Light transmittance:	83 x 92 mm	
Watts:	42W	
Housing:	Glass-fibre reinforced plastic	
Protective category:	IP5K9K	

Part Numbers:

Mega Beam Xenon	1GM 996 135 ...
Accessories and Spare Parts	
Bulb (included in the scope of supply)	
Xenon bulb D1S	8GS 009 028-001
Xenon bulb D2S	8GS 007 949-101
Light unit	
D1S (Close-range illumination)	1GM 990 303-151
D1S (Long-range illumination)	1GM 990 303-161
D2S (Close-range illumination)	1GM 990 303-001
D2S (Long-range illumination)	1GM 990 303-011

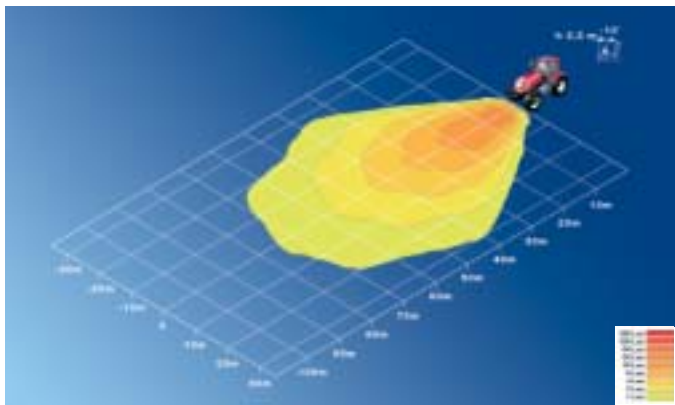
Connection cable	12V	8KB 990 299-221
	24V	8KB 990 299-231
Ballast	12V	5DV 008 855-001
	24V 42W	5DV 008 856-001

Mega Beam Xenon

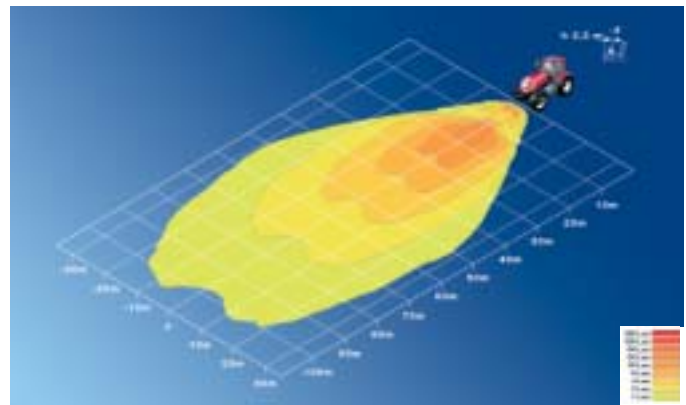
Worklights



Part Number 1GM 996 135 ...	-001	-041	-051	-101	-111	-141	-151
Close-range illumination	■	■		■		■	■
Long-range illumination			■		■		
12V or 24V ballast	12V	24V	24V			12V	24V
12V and 24V				■	■		
D1S or D2S xenon	D2S	D2S	D2S	D1S	D1S		
Upright mounting	■	■	■	■	■	■	■
IP5K4K	■	■	■	■	■	■	■
IP5K9K	■	■	■	■	■	■	■
High-pressure-jet resistant	■	■	■	■	■		
4-point fastening	■	■	■	■	■	■	■
Swivel base	■	■	■	■	■	■	■
Connection cable	3700mm	3700mm	3700mm				
Vibration damping	■	■	■	■	■		



Close-range illumination 10°



Long-range illumination 4°