

Acid-resistant, Corrosion-resistant and Compact for Excellent Light Output

Lighting technology:

The Mega Beam H3 is a halogen worklight. The aluminium reflector of the worklight is based on free-form technology. Despite its compact dimensions, the reflector provides excellent light output. An H3 bulb is used as the light source (not included in the scope of supply). The worklight can be used both with 12 V and 24 V vehicle-electric-system voltages.

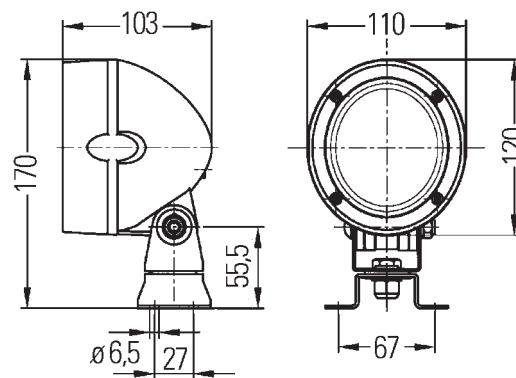
Design:

The black bulb housing of this sturdy worklight is made of glass-fibre-reinforced plastic, which is acid resistant and corrosion resistant. To protect the lens, the housing has a protruding edge. Thanks to its compact dimensions, the worklight can be used universally. In the case of heavy-duty versions, a patented damping system is used which protects the light from vibrations and therefore extends the service life of the bulb.



Technical Data Mega Beam H3

Rated voltage (U _N):	12V	24V
Recommended inclination angle:		
-321/-171/-241	15°-25°	
-061/-081	10°-15°	
-051/-071	2°-5°	
Bulb (not included in the scope of supply):	H3	
Light transmittance:	83 x 92 mm	
Watts:	35-55W	70W
Housing:	Glass-fibre reinforced plastic	
Protective category:	IP5K4K and IPX9K	



Mega Beam H3

Part Numbers:

Mega Beam H3 1GM 996 134 ...

Accessories and Spare Parts

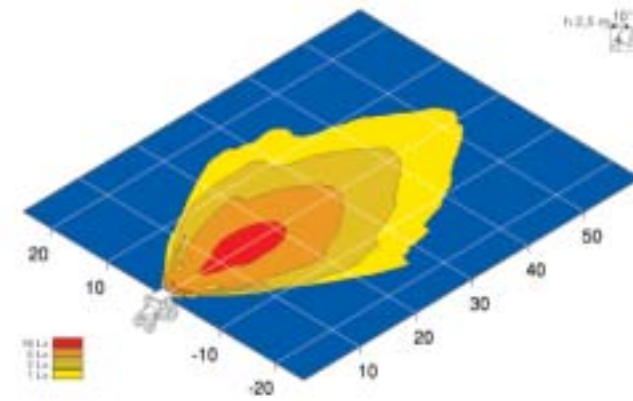
Bulb	12V	55W	8GH 002 090-133
	12V	35W	8GH 002 090-271
	24V	70W	8GH 002 090-251

Mega Beam H3

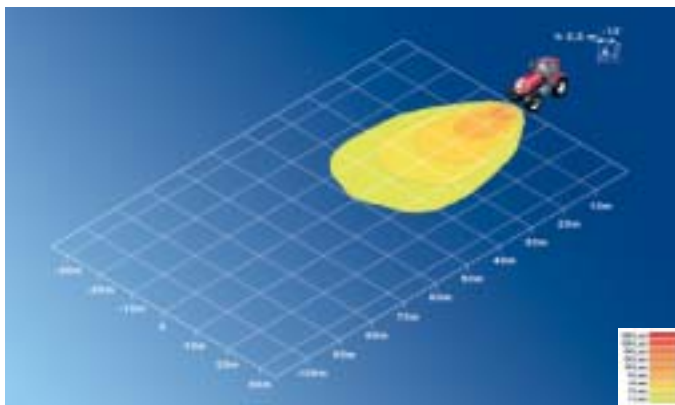
Worklights



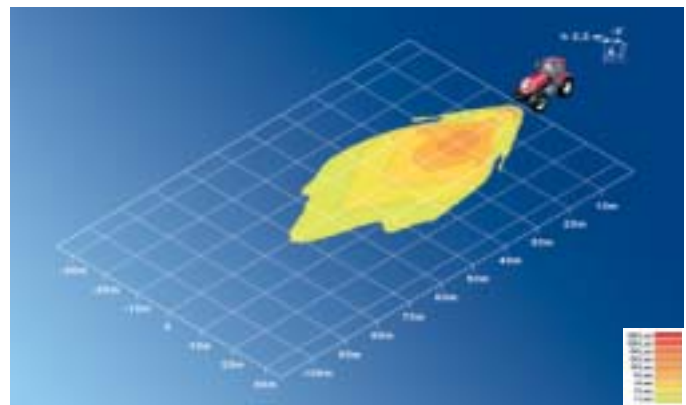
Part Number 1GM 996 134 ...	-051	-061	-071	-081	-171	-321	-241	-271	-371
Ground illumination					■	■	■	■	■
Long-range illumination	■		■						
Off-road illumination		■		■					
Upright mounting	■	■	■	■	■	■	■		
Pendant mounting	■	■	■	■	■	■	■		
Side mounting								■ right	■ left
Prism glass lens					■	■	■	■	■
Clear-glass lens	■	■	■	■					
IP5K4K	■	■	■	■	■	■	■	■	■
IP5K9K	■	■	■	■	■	■	■	■	■
High-pressure-jet resistant	■	■	■	■	■	■	■	■	■
4-point fastening	■	■	■	■	■	■	■		
Swivel base	■	■	■	■	■	■	■		
Approved in accordance with GGVS/ADR	■		■		■				
Handle							■		
Sturdy housing	■	■	■	■	■	■	■	■	■
Vibration damping	■	■	■	■	■	■	■		
Cable entry with grommet	■	■				■	■	■	■
AMP plug-type connection			■	■	■				



Off-road illumination 10°



Ground illumination 13°



Long-range illumination 5°