

## State-of-the-art Xenon Technology from Hella

### Lighting technology:

This worklight is equipped with a 35 W xenon bulb. Thanks to the xenon technology this worklight produces 2.5 times more light in comparison with a 55 W halogen bulb. In addition, the xenon bulb has an average service life 5 times that of a halogen bulb. The light colour of this xenon bulb measures up to that of daylight. In the dark, objects are thus discernible with natural colours. Another advantage of the xenon bulb is its constant brightness, even with fluctuating vehicle-electric-system voltages between 8-18 V in the case of 12 V devices and 18-32 V in the case of 24 V devices.

### Housing:

The housing of this worklight is made of glass-fibre-reinforced plastic which is resistant to acid and corrosion. Thanks to the integrated xenon electronics integrated into the compact housing, the light can be mounted very easily, without an additional external ballast. The AS 200 Xenon is resistant to high-pressure cleaning.

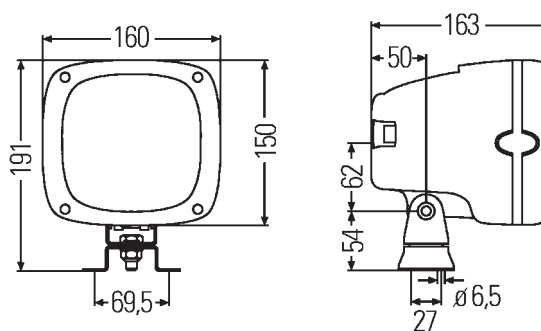
To protect the lens, the housing has a protruding edge at the front. A handle making it easier to adjust the light to illuminate the working space optimally is integrated into the top of the housing. The U-bracket provides a stable four-point fastening. The AS 200 Xenon is suitable for upright mounting. The AS 200 worklight is also available as a 230 V version (-241, -251).

### Tip:

In order to be able to guarantee the maximum illumination time of the xenon bulb, the worklights should be used in a horizontal position with an inclination of no more than  $\pm 30^\circ$ .

### Technical Data AS 200 Xenon

Rated voltage ( $U_N$ ):	<b>12V</b>	<b>24V</b>
Operating voltage:	9-16V	18-32V
Rated current:	3,2A	1,6A
Starting current (over a period of 10s max.):	<17 A	<8,5A
Switch-on current peak (over a period of 1 ms):	<20A	<10A
max. line resistance (impedance) between ballast and power source	150mOhm	300mOhm
Fuse to be connected in series:	15A	7,5A
Electromagnetic compatibility:	Observance of EMC Directive 72/245/EEC and 95/54/EC	
Power consumption:	42W	
Recommended inclination angle: -001/-011/-021/-311/-141/-041	10°-25°	
Recommended inclination angle: -061/-071/-081/-091/-131/-151	3°-10°	
Light transmittance:	123 x 123 mm	
Protective category:	IP5K4K	



AS 200 Xenon

### Part Number:

<b>AS 200 Xenon</b>	<b>1GA 996 142 ...</b>
<b>Accessories and Spare Parts</b>	
D2S xenon bulb:	<b>8GS 007 949-101</b>
Light unit (Long-range illumination)	<b>1GA 990 305-011</b>
Ground illumination	<b>1GA 990 305-011</b>
Connection cable, 3700 mm, with relay and fuse for AMP plug-connection, 12 V	<b>8KB 990 299-111</b>

Connection cable, 3700 mm, with relay and fuse for AMP plug-connection, 24 V **8KB 990 299-121**

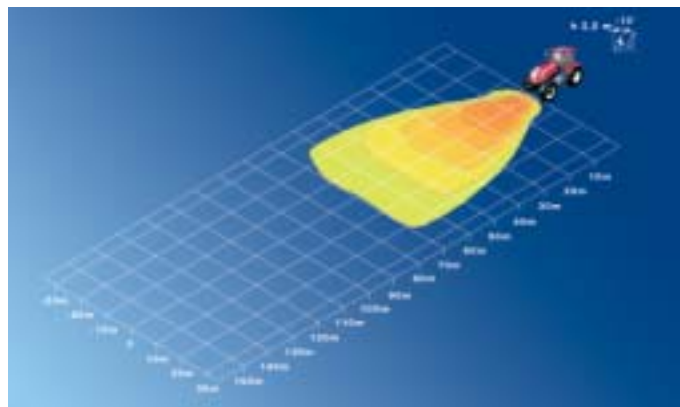
# AS 200 Xenon

## Worklights

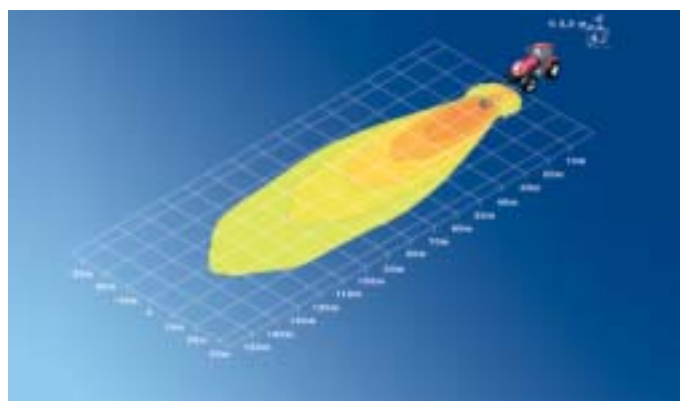


Part Number 1GA 996 142 ...	-001	-011	-021	-041	-061	-071	-081	-091	-131	-141	-151	-311	-241	-251
Ground illumination	■	■	■	■						■		■	■	
Long-range illumination					■	■	■	■	■		■			■
12 V or 24 V ballast	12V	24V	12V	12V	12V	24V	12V	24V	24V	24V	24V	24V	230V	230V
D1S or D2S Xenon	D2S	D2S	D2S	D2S	D2S	D2S	D2S	D2S	D2S	D2S	D2S	D2S	D2S	D2S
Upright mounting	■	■	■	■	■	■	■	■	■	■	■	■	■	■
IP5K4K	■	■	■	■	■	■	■	■	■	■	■	■	■	■
4-point fastening	■	■	■	■	■	■	■	■	■	■	■	■		
Swivel base	■	■	■	■	■	■	■	■	■	■	■	■	■	■
Pipe-socket fixing	Acc.	Acc.			Acc.	Acc.	Acc.	Acc.	Acc.					
Magnetic bracket				■										
Connection cable with relay & fuse	3.1 m	3.1 m	3.1 m		3.1 m	3.1 m								
Connection cable				2.5 m			2.5 m	2.5 m		4.5 m	4.5 m		10m	10m
Hardened glass lens	■	■	■	■	■	■	■	■	■	■	■	■	■	■
Handle (integrated)	■	■	■	■	■	■	■	■	■	■	■	■	■	■
Housing ring	red	red	red	red	red	red	red	red	b/w	red	red	b/w	red	red
Switch							■	■						

Acc. = Accessory



Ground illumination 10°



Long-range illumination 5°

