



## BRIEF INFORMATION

### Corner Module 270

- › Set of two modules is homologated as “half bar” (amber: ECE R65 HTA1 / blue: ECE R65 HTB1)
- › Wide angle coverage of at least 270° by using two modules and 360° by using four modules
- › Synchronization of 2 or 4 modules
- › Integration in the vehicle or on-top mounting

## PRODUCT FEATURES

The Corner Module 270 is a special wide angle warning light which is approved as a “half bar” as a set of two modules and offers a new alternative to conventional beacons. Two modules illuminate an area of at least 270° at a distance of 20 m from the vehicle. They can be integrated into the vehicle body or mounted on top by using a bracket. For mounting the product on top, suitable brackets are included for the amber version.

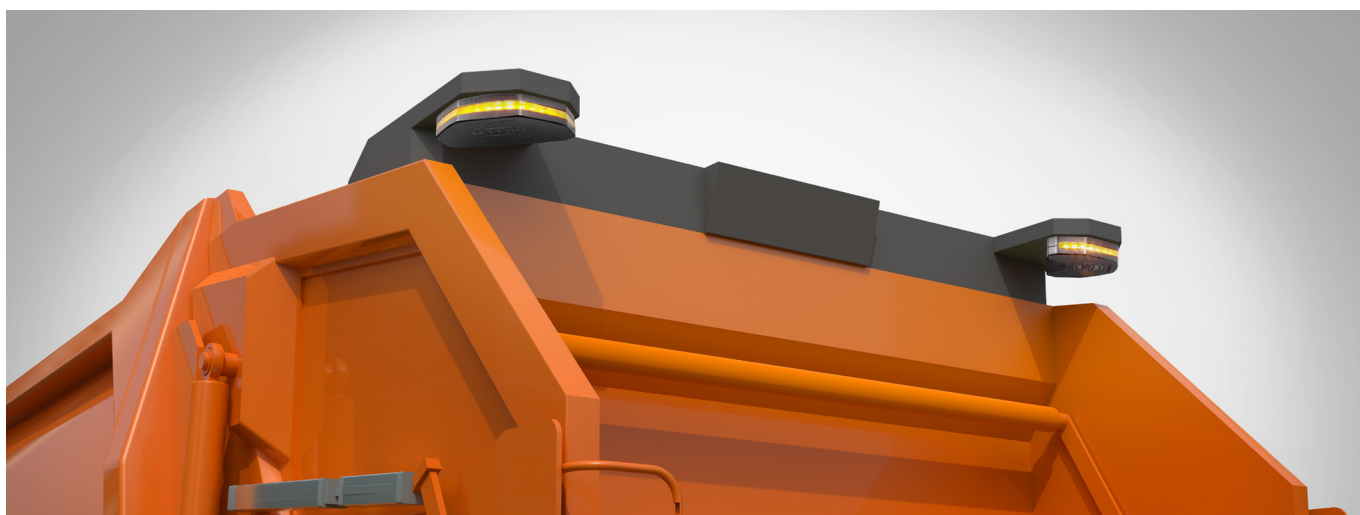
The housing is black and a flashing amber or blue warning light creates attention around the vehicle. It is possible to create a double flashing pattern and synchronize the modules. The modules must be positioned at a 45° angle in regards to the driving direction of the vehicle to match the legal requirements for mounting.

## APPLICATION EXAMPLES



### Integration

In order to integrate the elements into the vehicle body, appropriate space must be planned. There are legal requirements to be observed, so that the modules must be positioned at an angle of 45° to the driving direction of the vehicle.



### Bracket mounting

The supplied brackets are used for surface-mounting of the product. It is important to position the modules at an angle of 45° to the direction direction of the vehicle in order to meet the legal requirements for mounting. For the blue version, the brackets are not included in the scope of delivery, but are available on request.



# TECHNICAL DETAILS

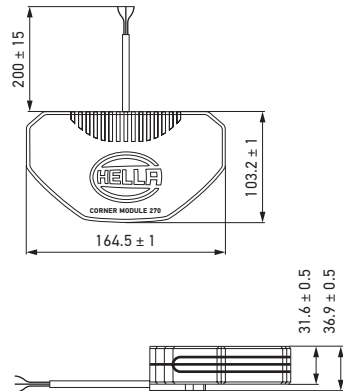
## Technical data

Operating voltage range	Multi-voltage (9–32 V)
Rated voltage	12 V and 24 V
Current consumption	Max. 2.5 A for one module
Power consumption	Max. 30 W for one module
Light function	Flashing
Light source	LED
Material	Housing: PC-ABS Cover lens: polycarbonate
Weight	318 g
Temperature range	-40 °C to +60 °C
Protection class	IP 6K7, IP 6K9
Approved*	ECE-R10, ADR/ GGVSEB, ECE-R65 HTA1 (amber), ECE-R65 HTB1 (blue) (valid only for the set of two modules)
Compliant	CISPR 25 Class 5
Protection	Polarity reversal protection
Mounting	Amber: Integration, bracket mounting Blue: Integration (bracket mounting on request)
Connection	200 mm cable Amber: Cable ends open Blue: AMP-SUPERSEAL, 3-pin

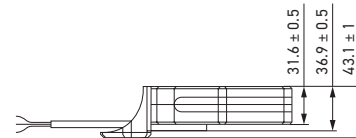
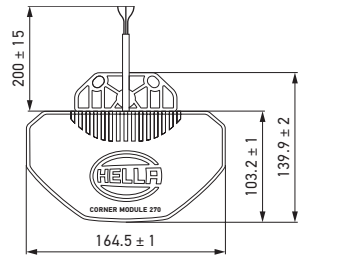
\* Vehicle specific T-Homologation is possible on request.

\*\* Other electrical connections on request.

## Dimensional sketch





Integration



Bracket mounting

# PROGRAM OVERVIEW

Product picture	Description	Part number	VPE*
	Corner Module 270, flashing, amber, set of two modules	<b>2XD 455 355-001</b>	1
	Corner Module 270, flashing, blue, set of two modules	<b>2XD 455 355-807</b>	7

\* Packaging unit