



With ECE type approval

BRIEF INFORMATION

Auxiliary headlamp LED Light Bar 350

› Version: LED Light Bar 350 with plastic bracket or universal bracket

PRODUCT FEATURES

- LED high-beam headlamp in the form of a compact light bar
- Low profile and lightweight
- Developed for the special requirements of off-road vehicles and for aerodynamic installation on the roofs of truck cabs
- For off-road use, briefly immersible (fording ability of up to 2 hours at up to 10 m)
- Effective heat dissipation from the LED electronics through the thermo-conductive plastic housing
- Operating voltage range: Multi-voltage (9 – 33 V)
- Rated voltage: 12 V and 24 V
- Power consumption: 25 W
- Protection class: IP 6K7
- Light source: High-luminous-intensity, high-power LEDs
- Approved: ECE-R112, ECE-R10

SCOPE OF SUPPLY

- Individual headlamp with 2,500 mm, 2-pin connecting lead (with open ends)
- Incl. bracket set
- Integral LED light sources

PROGRAM OVERVIEW

With plastic holder

LED high-beam headlamp (ECE Ref. 20)	1FJ 958 040-001
LED high-beam headlamp (ECE Ref. 30)	1FJ 958 040-051

With universal holder

LED high-beam headlamp (ECE Ref. 20)	1FJ 958 040-072
LED high-beam headlamp (ECE Ref. 30)	1FJ 958 040-082

LED LIGHT BAR 350 WITH PLASTIC BRACKET

- Including fixing brackets and screws
- The positions of the fixing brackets on the vehicle can be varied in order to alter the clearance
- Suitable for horizontal surface mounting
- Pendant mounting can be achieved by altering the mounting angle by 180° and directing both fixing brackets upward
- Compact and with many different mounting options
- Weight: 700 g



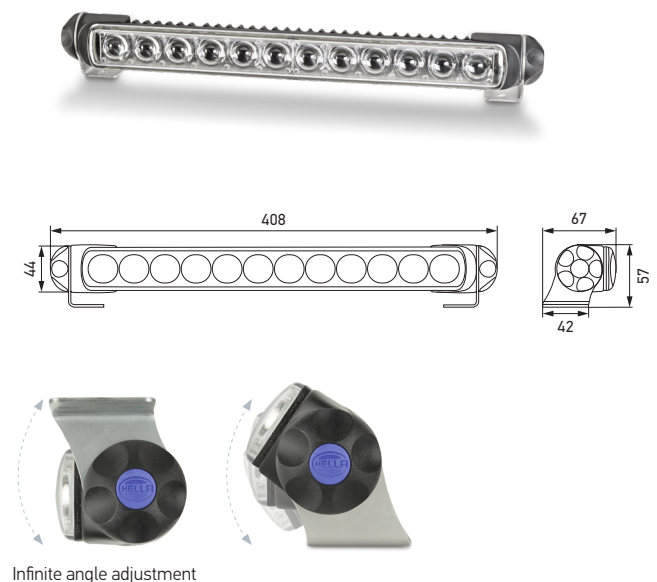
The variable positioning of the two plastic brackets using the clamping joint on the housing ribs allows flexible mounting options on the vehicle.



Angle adjustment: 20° downward and 30° upward when mounted upright.
(Tighten mounting nuts to hold at the set tilt angle)

LED LIGHT BAR 350 WITH UNIVERSAL BRACKET

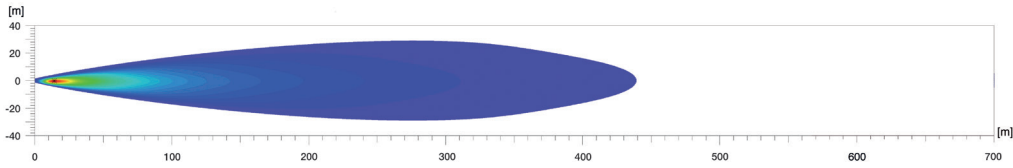
- Including universal bracket set (also available as spare part 8HG 958 139-841)
- Continuously variable adjustment for all mounting positions
- Suitable for upright mounting, pendant mounting, and mounting on surfaces at any angle
- Compact and with many different mounting options
- With drilling template for easy mounting
- Weight: 700 g



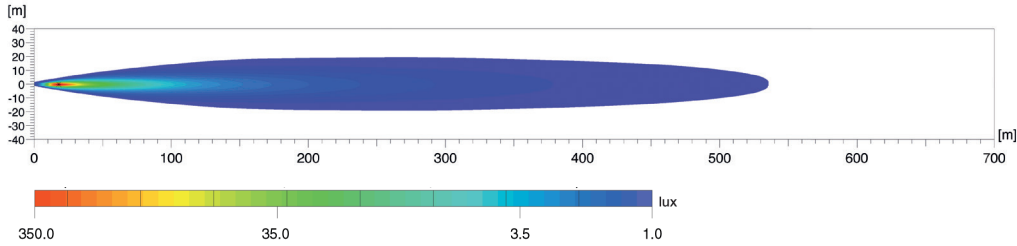
Infinite angle adjustment

LIGHT DISTRIBUTION

LED Light Bar 350, LED high-beam headlamp with reference number 20



LED Light Bar 350, LED high-beam headlamp with reference number 30



The light distribution shows 2 high-beam headlamps each in function.

Lux is the unit used to measure illuminance.

It specifies the luminous flux emanating from the light source that strikes a specific surface. For example, an office workplace should be illuminated with at least 500 lux, and the human eye can still read a newspaper without any problems at 1 lux. The values under the lux bar indicate where the corresponding illuminance is achieved on the light distribution diagrams.

Reference no. (Ref.)

The reference number (Ref.) is a figure that applies to a high-beam headlamp. According to the ECE regulation, this reference number must not exceed the upper limit of 100 per vehicle. In this case, the two values of the standard high beams (left and right headlamps) are added to the values of other mounted high-beam headlamps. The value is entered on the lens of approved headlamps.

ACCESSORIES – BRACKET FOR DOUBLE MOUNTING



SCOPE OF SUPPLY

2 x stainless steel double-mounting brackets
(For the mounting of 2 LED Light Bars with universal bracket)

8HG 958 128-811

Mounting brackets allow continuously variable illumination adjustment.

ACCESSORIES – CONNECTING ELEMENT



SCOPE OF SUPPLY

2 x connecting element (plastic)
1 x M8 (20 mm) stainless steel cheese-head screw

8HG 958 139-881

The connector set makes it easier to horizontally mount multiple LED Light Bars and to align them exactly without any differences in the level.



See the light!
Auxiliary headlights from HELLA. The right light for every application. Try them out online now!

www.hella.com/upc

www.hella.com/truck

www.hella.com/offroad

www.hella.com/eliver