

BRIEF INFORMATION

Module 60 LED

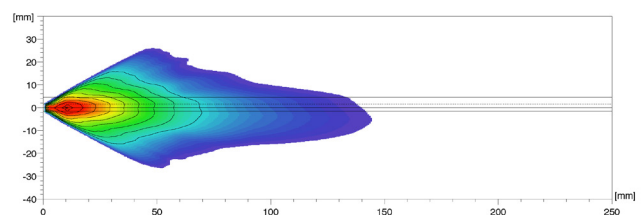
- › Particularly compact LED headlamp series
- › Specially developed lens system for homogeneous illumination
- › Enables easy conversion from halogen to LED technology

PRODUCT FEATURES

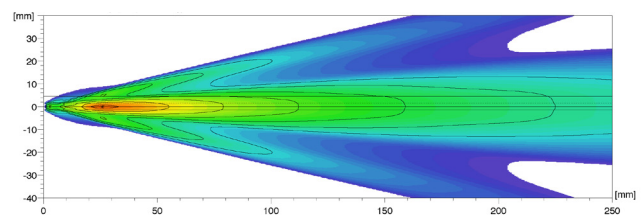
Anyone on the road or in the field at night must be able to rely one hundred percent on their illumination. HELLA's compact Module 60 LED headlamp series provides particularly homogeneous illumination and offers exactly the safety and reliability required on the road as well as in off-highway applications. The lens system specially developed by HELLA focuses the light of the LEDs and distributes it ideally over the application area. Additionally, the products are durable and resistant to vibration, dirt and water.

A special version with an additional mounting frame is available for agricultural and construction machinery. The fixing points of the mounting frames are identical to those of the already established Module 60 halogen headlamp series. Thus, the conversion to LED technology is even easier and faster with this version, in just a few steps. The modules are available as low beam or high beam version.

LIGHT DISTRIBUTION



Low beam



High beam



TECHNICAL DETAILS

Technical data	
Operating voltage range	Single-voltage (9 – 16 V)
Rated voltage	12 V
Power consumption	16 W
Light source	LED
Colour temperature	6,000 K
Material	Housing: die-cast aluminium Lens: Glass
Weight	278 g
Protection class	IP 6K9K, IP 6K7
Approved	ECE-R149 Class DS, ECE-R10.05, FMVSS 108 (without carrier frame)
Compliant	ASABE S0608 (with carrier frame)
Protection	Polarity reversal protection, overheating protection
Connection	TYCO connector (HB3)
Manufactured in	Austria

Dimensional sketch	
Low beam 1TL 998 670-021	
1TL 998 670-041	
High beam 1KL 998 670-031	
1KL 998 670-051	

PROGRAM OVERVIEW

Low beam (1TL 998 670-...)	-021	-041
Mounting frame		x
ECE-R149 Class DS	x	x
ASABE S0608		x
CCC	x	x
FMVSS 108	x	
ECE-R10.05	x	x

High beam (1KL 998 670-...)	-031	-051
Mounting frame		x
ECE-R149 Class DS	x	x
ASABE S0608		x
CCC	x	x
ECE-R10.05	x	x

ACCESSORIES

(not included in delivery)

Description	Part number
For 1TL 998 670-021 and 1KL 998 670-031 (variants without mounting frame) Contents: 3 screws, 3 nuts, 3 springs	9XX 331 361-111