

BRIEF INFORMATION

Driver electronics for flashing side marker lights

- To comply with ECE R48, revision 6
- Electronic ballast to make conventional side marker lights flash
- Functioning conforms to the law with existing indicator failure monitors through evaluation of the rear direction indicator

PRODUCT FEATURES

The control unit monitors functioning of the rear direction indicator. With any fault it switches off the flasher function of the side marker lights to ensure that the failure monitor of the towing vehicle conforms to the law.

- Only one control unit is required
- The compact design permits installation in a distribution box
- Extremely robust and watertight thanks to full encapsulation
- High degree of EMC protection for use in very challenging environments
- Suitable for use with all LED side marker lights

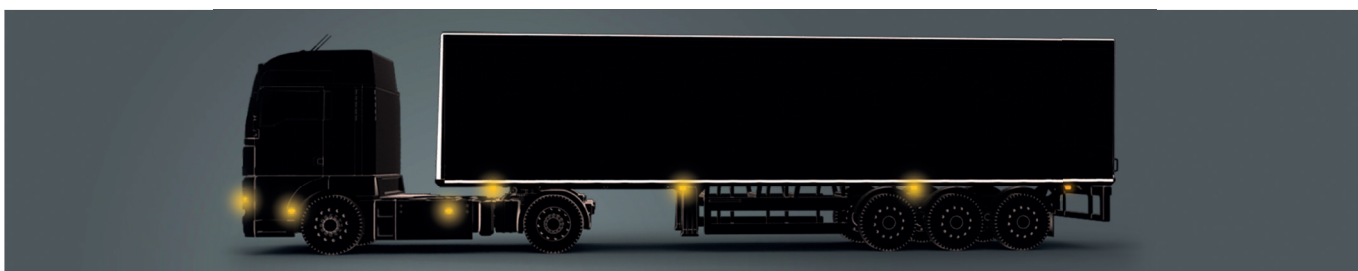
THE LEGAL REGULATIONS



ECE-R48, revision 5

Optional: On a vehicle with side marker lights, direction indicators belonging to CAT 5 **may** be operated in parallel.

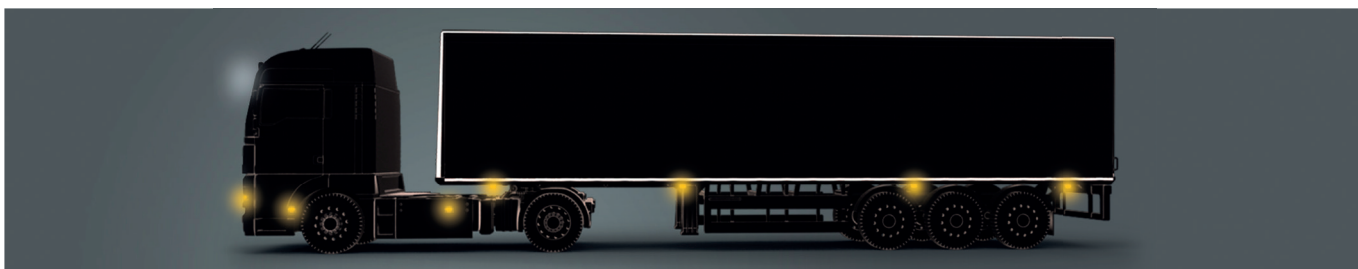
- The number of side marker lights and direction indicators depends on the length of the vehicle
- The number of direction indicators depends on the length of the vehicle



ECE-R48, revision 6

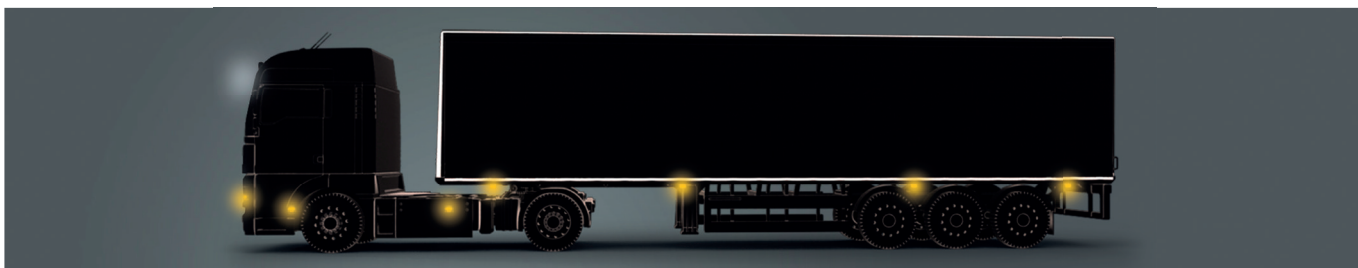
Mandatory: The vehicle **must** be equipped with a side flasher function.

Option 1: On a vehicle with side marker lights, direction indicators belonging to CAT 5 are operated.



OR

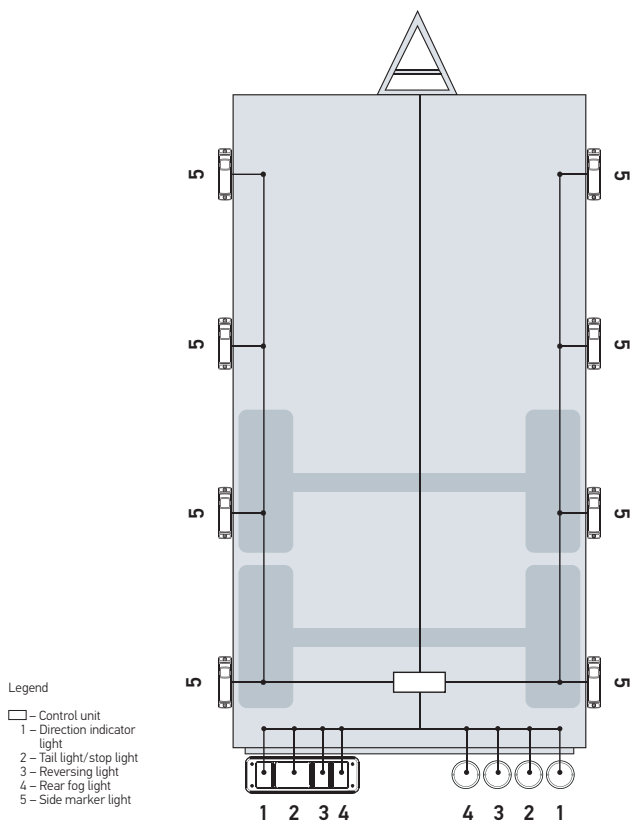
Option 2: On the vehicle, the existing side marker lights are switched on / off together with the direction indicator light. The existing side marker lights are switched on / off together with the direction indicator light (in phase), i.e. all side marker lights on one side must flash (except for combination lamps such as rubber arm lights). All yellow lights perform the the flasher function synchronously.



FAILURE MONITOR

If the side marker lights flash together (in phase) with the rear direction indicator light, they obtain their energy from the same supply line. If the rear direction indicator light is defective, this may have the result that the failure monitor fitted in the towing vehicle no longer functions in conformity with the law and does not identify a failure. The driver electronics developed by HELLA ensure the necessary safety here. A fault in the rear direction indicator light is reliably identified, and the towing vehicle is able to inform the driver.

TECHNICAL DETAILS



Connection diagram for control unit

1 Input	Direction indicator, left
2 Input	Direction indicator, right
3 Input	Tail light, left
4 Input	Tail light, right
5 Input	Ground
6 Output	Side marker light, left
7 Output	Direction indicator, left
8 Output	Side marker light, right
9 Output	Direction indicator, right

RANGE OVERVIEW

Technical Data

Operating voltage	24 V
Max. output power SML	10 W
Max. output power DI	63 W
Indicator failure switching threshold	60 mA
Mating connector	6.3 mm blade terminal

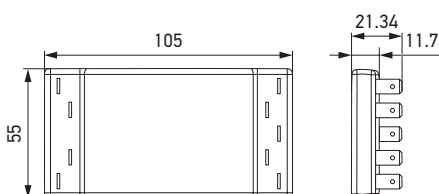
Description

Control unit ECE-R48,
Category 6, 24 V

Part number

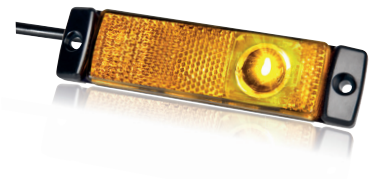
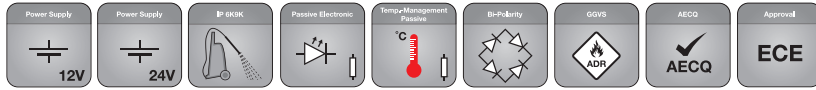
5DS 223 544-001

Dimensional sketch



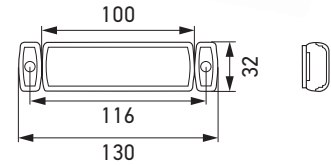
WE RECOMMEND THE FOLLOWING SIDE MARKER LIGHTS

This LED product has the following features:



LED side marker light (SML) with reflex reflector

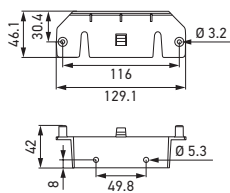
Suitable for horizontal and vertical mounting. With 1 yellow LED, yellow light, and black housing. The light is fixed using the lateral mounting holes or using a bracket.



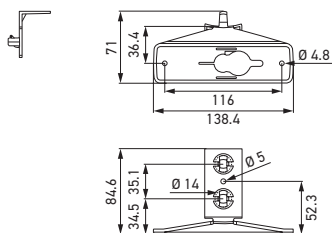
Part No.	Connector type on the light			Cable	Mounting
				Length in mm	Horizontal
2PS 008 645-307		■			
2PS 008 645-317		■		1,300	■
2PS 008 645-367		■		2,000	■
2PS 008 645-847		■		1,300	■
2PS 008 645-587			■	300	■
2PS 008 645-607			■	150	■
2PS 008 645-617			■	300	■
2PS 008 645-627			■	1,300	■
2PS 008 645-717			■	1,600	■
2PS 008 645-787			■	1,300	■
2PS 008 645-797			■	150	■
2PS 011 422-077	■			1,300	■
2PS 011 422-267	■			450	■

c)
b)
b)
d)
d)
a)

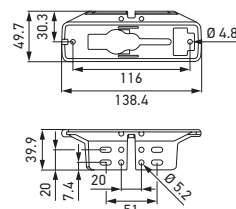
BRACKET



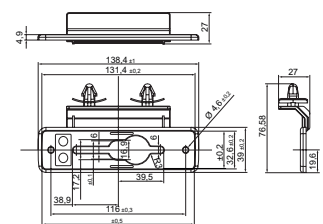
a) 8HG 160 409-00



b) 8HG 340 413-00



c) 8HG 340 489-00



d) 8HG 340 488-03