



BRIEF INFORMATION

Floodlight

- Supreme quality aluminium housing
- For various applications: workshop, high mast, conveyor belt etc.
- CO₂ emission reduction in comparison to metal halide lamps
- Increased work safety through optimized lighting and specially developed colour temperature 5,700 K

PRODUCT FEATURES

Floodlight can prevent workplace fatigue by increasing visibility through its optimized light output (130 lumens per watt). It is mainly used in extreme environments where high output lighting is required. This offers protection to workers by illuminating potential dangers near and far. The light of the Floodlight gives the perception of daylight. It has a specially developed LED colour temperature of 5,700 K. The cooler colour temperature gives a clean crisp and invigorating lighting atmosphere, raising alertness and improving the employees' performance at work.

The housing is made of high quality die-cast aluminium which is robust, corrosion resistant and retains its high dimensional stability. The LED technology ensures a low power consumption and long life span, coupled with a reduction of CO₂ emissions compared to conventional metal halide lamps. The typical application of a floodlight is for example: workshops, conveyor belts or high masts, in fact anywhere where large areas of illumination are required.

Further key features:

- Power factor > 0.9
- Surge protection: 1.2 KV Line-Earth, Line-Neutral, Neutral-Earth
- Californian Proposition 65 conform (US, CA)

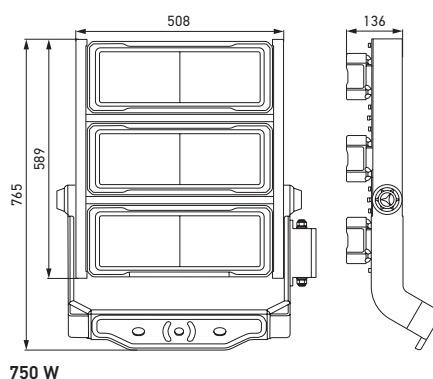
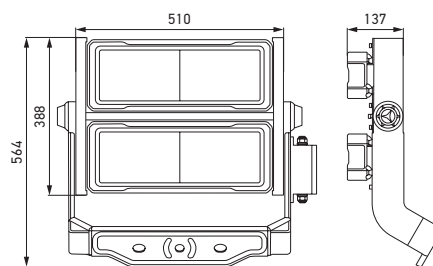
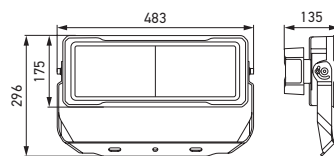
TECHNICAL DETAILS



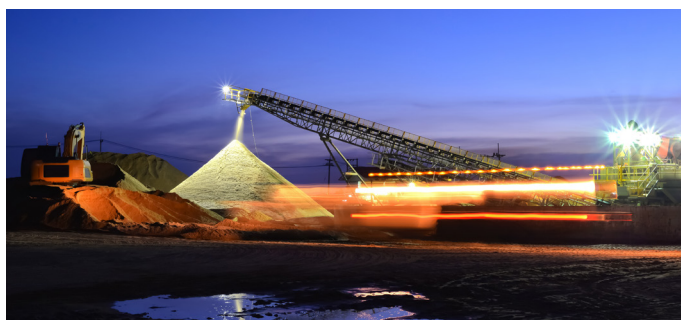
Technical data

	250 W	500 W	750 W
Operating voltage	Multi-voltage (100–277 V AC)		
Rated voltage	110 V AC / 230 V AC		
Power consumption	250 W	500 W	750 W
Light output	32,500 lm	65,000 lm	97,500 lm
Light source	LED		
Colour temperature	5.700 K		
Material	Housing: die-cast aluminium		
Weight	6,500 g	19,500 g	27,000 g
Temperature range	-30 °C to +50 °C		
Protection class	IP 65		
Type approval	UKCA, RoHS, UL, cUL, BIS, RCM		
Mounting	Upright		
Connection	600 mm cable with open ends		

Dimensional sketch

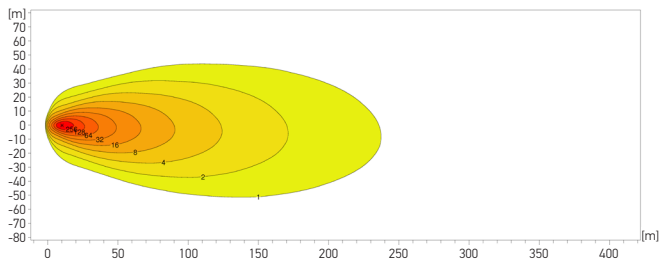


POSSIBLE APPLICATION AREAS

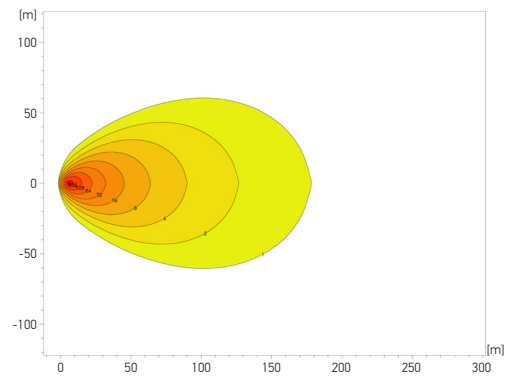


LIGHT DISTRIBUTION

250 W

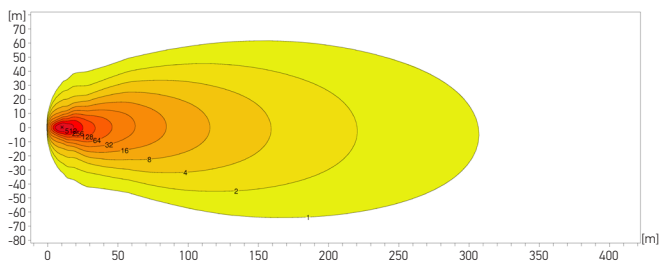


long-range illumination

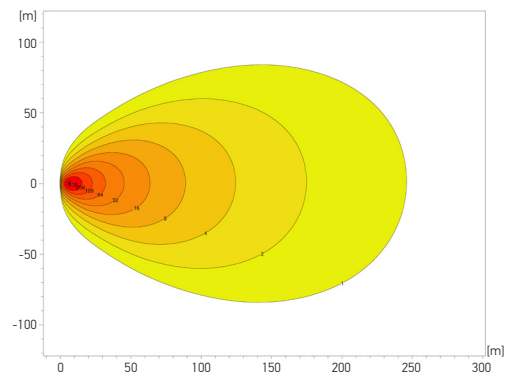


close-range illumination

500 W

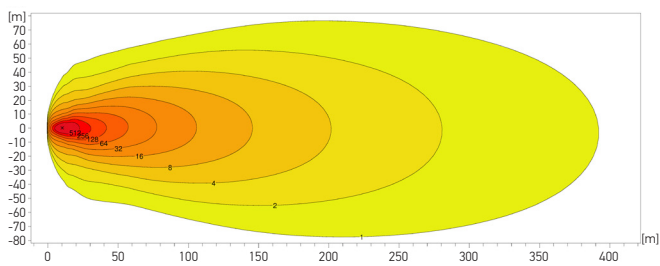


long-range illumination

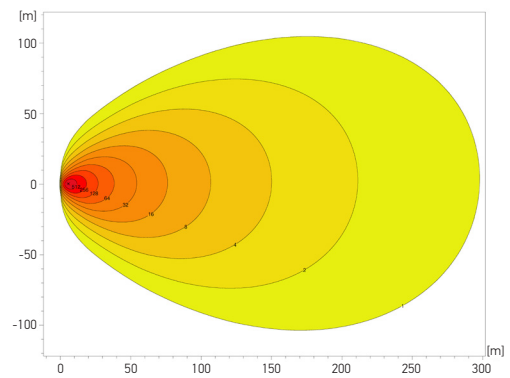


close-range illumination

750 W



long-range illumination

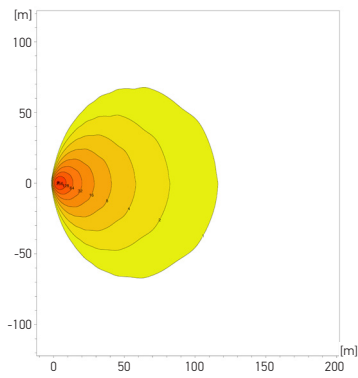


close-range illumination

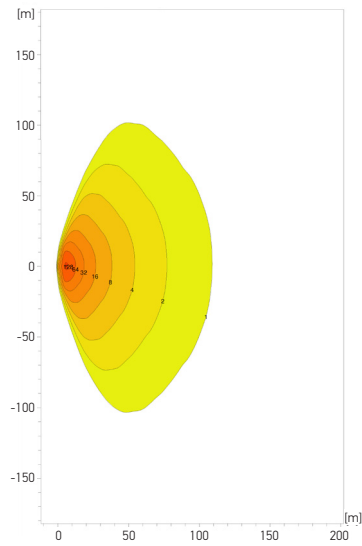


LIGHT DISTRIBUTION

250 W

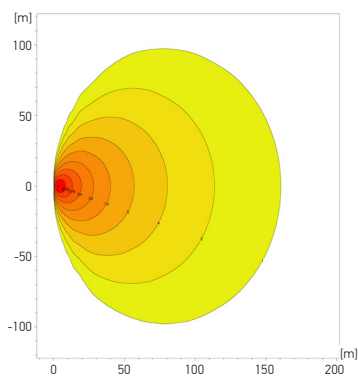


extra-wide illumination

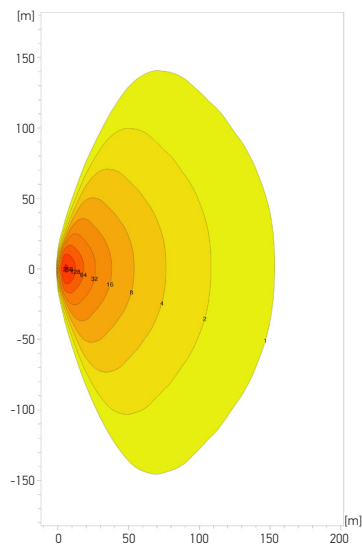


ultra-wide illumination

500 W

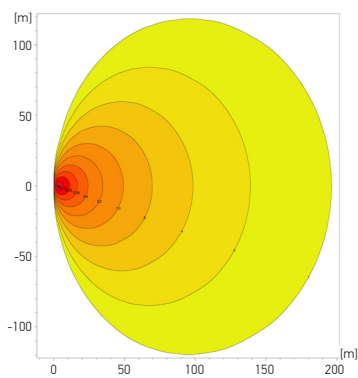


extra-wide illumination

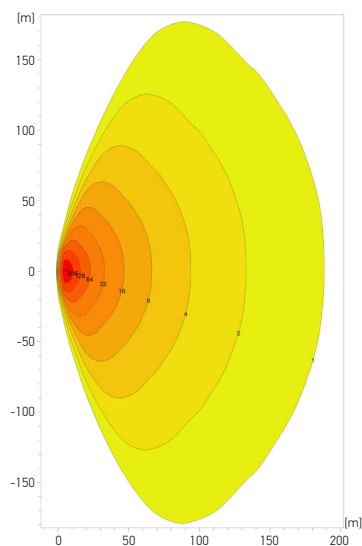


ultra-wide illumination

750 W



extra-wide illumination



ultra-wide illumination

lux <= 0 1 2 4 8 16 32 64 128 192 256 512

PROGRAM OVERVIEW

Product picture	Certified for region	Variant	Illumination	Part number	
	Europe (EU) South Africa (SA)	250 W	long-range illumination	1GJ 996 272-011	
			close-range illumination	1GJ 996 272-021	
			extra-wide illumination	1GJ 996 272-031	
			ultra-wide illumination	1GJ 996 272-041	
		500 W	long-range illumination	1GJ 996 272-061	
			close-range illumination	1GJ 996 272-071	
			extra-wide illumination	1GJ 996 272-081	
			ultra-wide illumination	1GJ 996 272-091	
		750 W	long-range illumination	1GJ 996 272-111	
			close-range illumination	1GJ 996 272-121	
			extra-wide illumination	1GJ 996 272-131	
			ultra-wide illumination	1GJ 996 272-141	
	United States (US) Canada (CA)	250 W	long-range illumination	1GJ 996 272-261	
			close-range illumination	1GJ 996 272-271	
			extra-wide illumination	1GJ 996 272-281	
			ultra-wide illumination	1GJ 996 272-291	
		500 W	long-range illumination	1GJ 996 272-311	
			close-range illumination	1GJ 996 272-321	
			extra-wide illumination	1GJ 996 272-331	
			ultra-wide illumination	1GJ 996 272-341	
		750 W	long-range illumination	1GJ 996 272-361	
			close-range illumination	1GJ 996 272-371	
			extra-wide illumination	1GJ 996 272-381	
			ultra-wide illumination	1GJ 996 272-391	
	India (IN)	250 W	long-range illumination	1GJ 996 272-511	
			close-range illumination	1GJ 996 272-521	
			ultra-wide illumination	1GJ 996 272-541	
		500 W	long-range illumination	1GJ 996 272-561	
			close-range illumination	1GJ 996 272-571	
			ultra-wide illumination	1GJ 996 272-591	
		750 W	long-range illumination	1GJ 996 272-611	
			close-range illumination	1GJ 996 272-621	
			ultra-wide illumination	1GJ 996 272-641	
		Australia (AU)	250 W	long-range illumination	1GJ 996 272-761
				close-range illumination	1GJ 996 272-771
				extra-wide illumination	1GJ 996 272-781
	500 W		ultra-wide illumination	1GJ 996 272-791	
			long-range illumination	1GJ 996 272-811	
			close-range illumination	1GJ 996 272-821	
	750 W		extra-wide illumination	1GJ 996 272-831	
			ultra-wide illumination	1GJ 996 272-841	
			long-range illumination	1GJ 996 272-861	
	750 W		close-range illumination	1GJ 996 272-871	
			extra-wide illumination	1GJ 996 272-881	
			ultra-wide illumination	1GJ 996 272-891	