



# BRIEF INFORMATION

## Ultra Beam LED Gen. 2

- The classic work lamp with LED technology
- Extremely high light output
- For versatile use

### PRODUCT FEATURES

With the Ultra Beam LED Gen. 2 the worldwide established Ultra Beam work lamp series is extended by a light optimized second generation in LED technology. Thanks to a much higher light output of 4,400 lumen, the Ultra Beam LED Gen. 2 can replace even the xenon work lamps without any problems.

The light is distributed by a specially developed multi-faceted reflector, thus ensuring homogeneous illumination. This work lamp is available in different illumination variants and therefore suitable for a wide range of applications. Despite the enormous light yield, the Ultra Beam LED Gen. 2 is using just 50 watt.

The integrated electronics protect the device in the event of polarity inversion and guarantee constant brightness, even when the operating voltage fluctuates between 9 and 32 volts. This ensures that the work lamp stays functional and guarantees safe working at night.

The light from the LED work lamp is very similar to daylight. This helps to distinguish colours more easily in the dark, and makes sensory perception through the human eyes much easier. This in turn facilitates work at night and prevents the eyes tiring quickly.

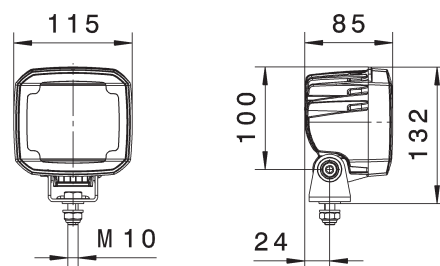
The work lamp's black housing is made of aluminium and incorporates cooling fins. These ensure sufficient heat dissipation from the 8 high-power LEDs. Additionally, a temperature sensor protects the work lamp from overheating. This is the only way the long service life of the LEDs (up to 30 times longer than a xenon gas-discharge lamp) can be exploited.

# TECHNICAL DETAILS

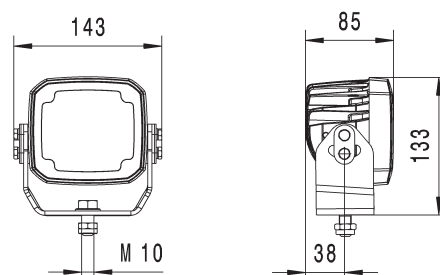
## Technical Data

Operating voltage/ Rated voltage	9 – 32 V
Recommended angle of inclination	Close-range illumination: 12° Long-range illumination: 5°
Light source type	8 high-power LEDs
Power consumption	50 W
Light output	4,400 lm
Colour temperature	6,500 K
Protection class	IP 6K9K and IP 6K8
Type approval	ECE-R10
Housing	Aluminium die cast
Light exit area	105 x 95 mm
Weight	1,040 g / 1,220 g (Heavy Duty)

## Dimensional sketch



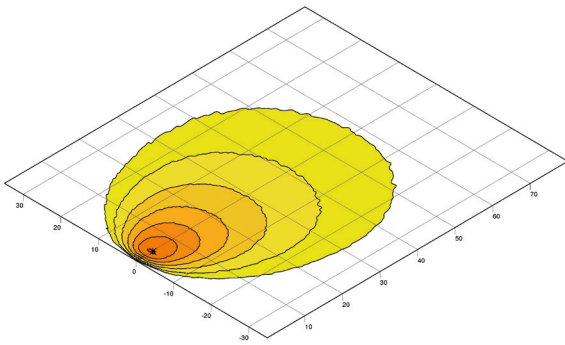
## Heavy Duty



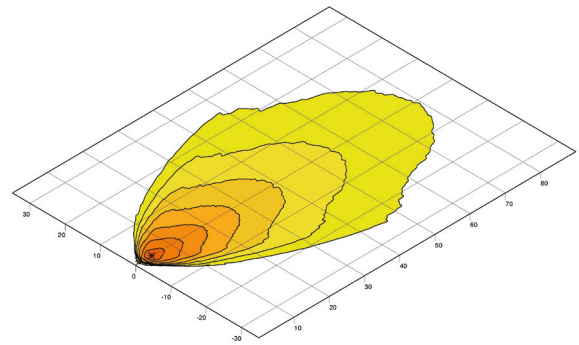
# RANGE OVERVIEW

1GA 995 606-...	-001	-011	-021	-071	-081	-171	-301
Close-range illumination	X	-	-	X	-	-	-
Long-range illumination	-	X	-	-	X	-	-
Spot illumination	-	-	X	-	-	-	-
<b>ZEROGLARE</b>	-	-	-	-	-	X	-
Diffuse Flood	-	-	-	-	-	-	X
Upright mounting	X	X	X	X	X	X	X
Pendant mounting	X	X	X	X	X	-	X
Swivel base/bracket width	42 mm	42 mm	42 mm	-	-	42 mm	42 mm
Heavy-duty bracket	-	-	-	X	X	-	-
DEUTSCH connector	X	X	X	X	X	X	X
Overheating protection	X	X	X	X	X	X	X
Polarity reversal protection	X	X	X	X	X	X	X

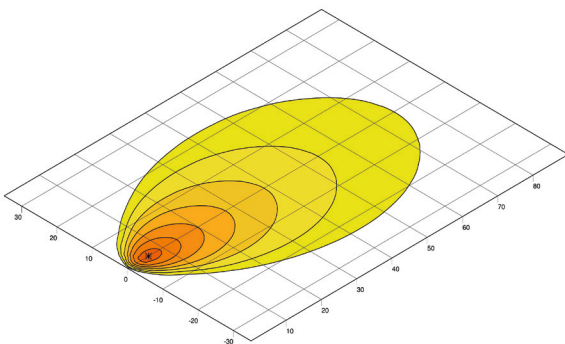
# LIGHT DISTRIBUTION



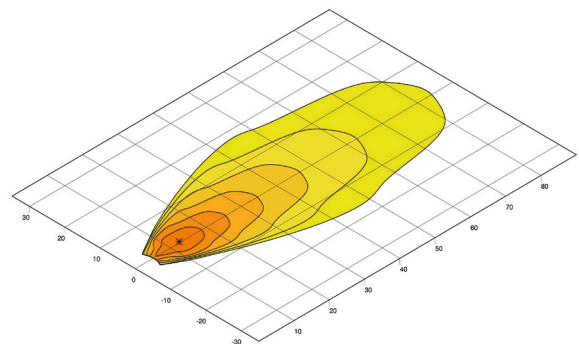
Close-range illumination



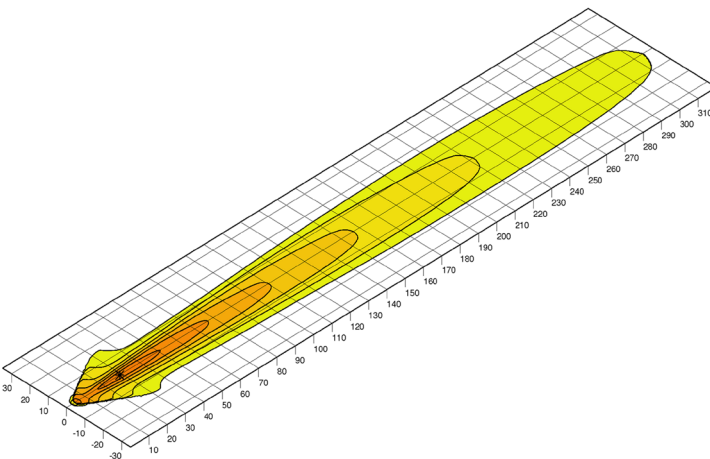
Long-range illumination



Diffuse Flood



ZEROGLARE



Spot illumination



**HELLA GmbH & Co. KGaA,**

Rixbecker Straße 75

59552 Lippstadt/Germany

Tel. +49 2941 38-0

Fax +49 2941 38-71 33

info@hella.com

www.hella.com

© HELLA GmbH & Co. KGaA, Lippstadt

J01015/04.20

Subject to technical and price modifications.