



BRIEF INFORMATION

DuraLED Flush Mount Marker Lamps

- High impact resistant lens made from Grilamid
- Ultra long service life
- Slim design – thickness of 9 mm

PRODUCT FEATURES

HELLA, the world's premier automotive lighting specialist, has launched a new range of easy-mount DuraLED Marker and Position Lamps, featuring a lens made from a revolutionary, highly UV stable, ultra-durable Grilamid optical nylon. This lamp series includes a robust Multivolt circuit with very low power consumption.

The use of the Swiss Made high tech material Grilamid for Marker and Position lamps is an industry first. Pioneered by HELLA some 7 years ago, the material properties of Grilamid remain unmatched to this day.

Grilamid has become the material of choice for operators of equipment regularly exposed to high vibration and impact conditions, as well as the myriad of common industry and agricultural chemicals.

Lightweight and easy to install, DuraLED Flush Mount Marker Lamps are UV, chemical, stress and impact resistant. Optional accessories include a marine grade – 316 stainless steel rim and coloured screw caps for a complete customized finish.

FURTHER PRODUCT FEATURES

Reverse polarity protection

If the polarity is accidentally reversed, the light does not suffer any damage.

Contacts

0.5m or 2.5m sealed cable may be selected.

Sealed to withstand high-pressure cleaning

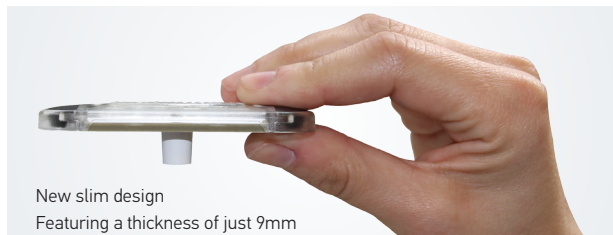
Tested to IP 6K7 and IP 6K9K, this light is protected from dust and water ingress under constant immersion.

High vibration resistance

The lights have been tested to HELLA Norm 67101 and meet the requirements for OEM production buses, commercial vehicles and tractors over 6.5 t.

Designed for a Fit and Forget service life

The latest LED technology provides an optimum signal pattern with low power consumption.



LED LIGHTING TECHNOLOGY

As a leading innovator in the field of automotive original equipment, HELLA is setting benchmarks:

Extremely low energy consumption




With the combination of efficient light-emitting diodes (LEDs) and precision optics, HELLA lights achieve the statutory light distribution with over 90 % less power consumption compared to bulb lamps! No change of light source, no maintenance and an extremely long operating life due to optimal thermal management. To extend the design life of the light, the components are arranged in a way that optimises the temperature conditions, preventing overheating of the LEDs at high ambient temperatures. Competent thermal management maximises design life. The design life of these LED lamps corresponds to that of the vehicle.

INSTALLATION



TECHNICAL DETAILS

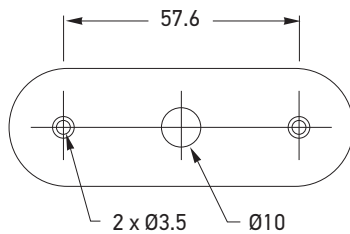
Technical Data

Type approval*	ECE  5878 (Position / End-outline) ECE  0007 (Side marker)
Operating voltage	Multivolt 9-33V
EMC approval	 10R-042899
Functions	Position lamp End-outline marker lamp Side marker lamp
Mounting	Horizontally or vertically. (Position / End-outline) Horizontally only. (Side marker)
Number of LEDs	2
Power consumption	0.5W
Operating temperature	-40°C to +60°C
Protection class	IP 6K7, IP 6K9K
Contacts	0.5m or 2.5m
Installation	Screw connection with 2 screws \varnothing 5 mm
Specification	Norm 67101, class 1.2, 2.2, 3.2, 4.1, 5.1, 6.1, 7.2, 10.2, 11.2
Design life	Design life of the vehicle*

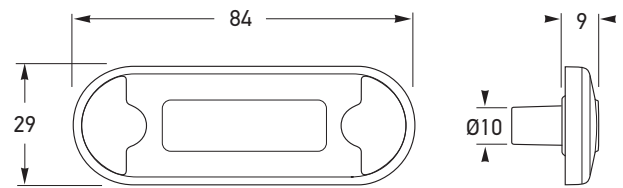
*Dependent upon the operating temperature.

Note: The individual LED lights may only be operated with a 3 A fuse. Operation of the light with AC voltage or synchronised DC voltage is not permitted.

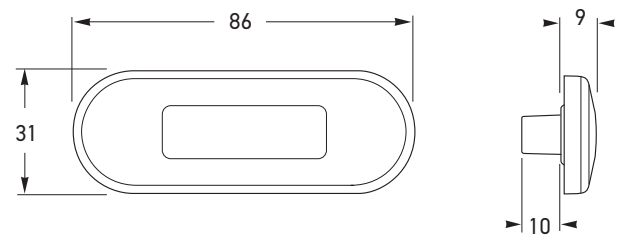
Hole pattern



Technical Drawing (Position / End-Outline Lamp)

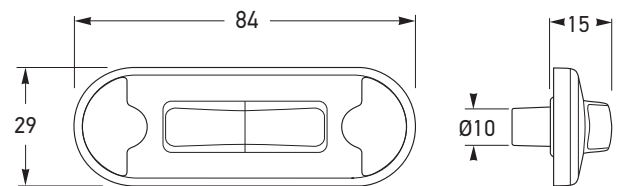


With optional Stainless Steel rim

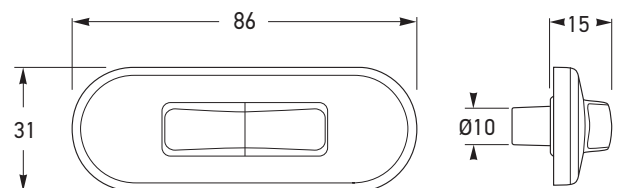


All dimensions in mm

Technical Drawing (Side Marker Lamp)



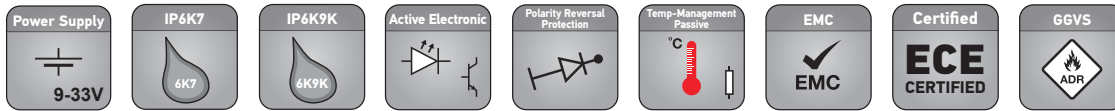
With optional Stainless Steel rim



APPLICATION EXAMPLES



RANGE OVERVIEW



Product Image	Part Number	Function	Connection	Packaging Unit
	2PF 959 855-201	Front Position / End Outline Lamp	0.5m cable	1
	2PF 959 855-207			24
	2PF 959 855-241		2.5m cable	1
	2PF 959 855-247			16
	2PF 959 855-251	Front Position / End Outline Lamp	0.5m cable	1
	2PF 959 855-257			24
	2PS 980 868-201	Side Marker Lamp	0.5m cable	1
	2PS 980 868-207			24
	2PS 980 868-211		2.5m cable	1
	2PS 980 868-217			16
	2XS 959 855-401	Rear Position / End Outline Lamp	0.5m cable	1
	2XS 959 855-407			24
	2XS 959 855-441		2.5m cable	1
	2XS 959 855-447			16
	2XS 959 855-451	Rear Position / End Outline Lamp	0.5m cable	1
	2XS 959 855-457			24

SPARE PARTS / ACCESSORIES

Product Image	Part Number	Function	Packaging Unit
	9AB 959 685-201	Polished Stainless Steel Rim – ECE Engraved	1
	9GD 958 028-001	Curved Gasket	1
	9GD 980 867-507	Rectangular Flat Gasket	8
	9HD 980 858-008	Black Screw Cap	4
	9HD 980 858-018	White Screw Cap	4